

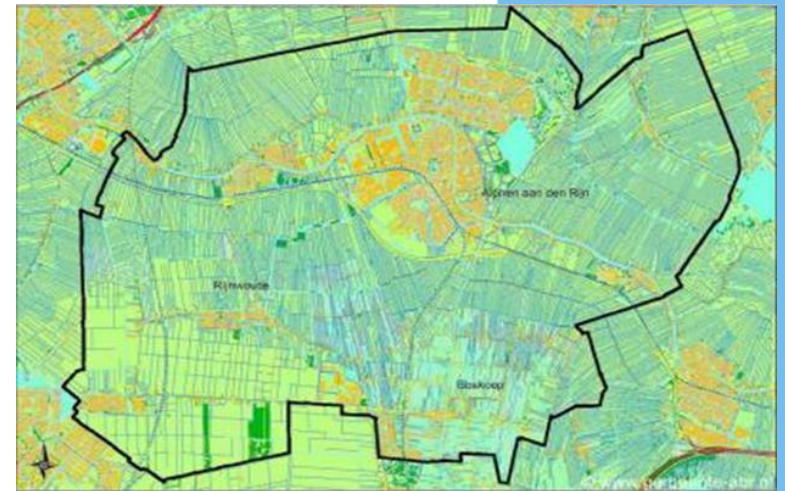
Dementia policy in Alphen aan den Rijn

More than 114.00 inhabitants

Alphen aan den Rijn and
seven surrounding villages

20,2%: 65 years or older

9,2%: 75 years or older



Topics:



- Policy on the elderly, including dementia
- Additional actions
- Dementia scan and dementia friendly municipality

Impact of the ageing population

The number of elderly people is doubling in twenty years time, as is the number of people with dementia (2020: 1700, 2040: 3400).

The elderly are getting older.

Government policy:
Older people should live at home longer, even when in need of intense care.



Increasing urgency: Policy on the elderly (2018)

We want to achieve that the elderly in Alphen aan den Rijn can live and participate as independently as possible, with support and care if needed.



Policy on the elderly (2018)

Key focus areas:

1. Housing and the living environment
2. Support and care
 - Elderly abuse, including financial abuse
 - Dementia
 - Loneliness
 - Informal care support, including respite care
3. Innovation, digitization
4. Information and awareness



Dementia: from policy to implementation



Additional actions to existing care services (since 2019):

- Patient journey (University of applied sciences Leiden)
- Odense house
- Better at home with dementia
- Information sessions for inhabitants about the signs of dementia and what they can do
- Extra daycare centers for people with dementia (also to relieve informal carers)
- Buddyproject for people with dementia (volunteers)
- Care robot Tessa

Additional actions:

- Moving groups for people with dementia (incl. swimming)
- Care services for young people with dementia (65 years and younger) and their informal carers
- Public campaign and a paper with articles and interviews about dementia, informal care and respite care (and other relevant subjects for the elderly)



Additional actions:

- Local policy on housing for the elderly
- Several new small-scale houses for people with dementia
- 2025: 120 apartments for the elderly (45% for people with long term care, like dementia)



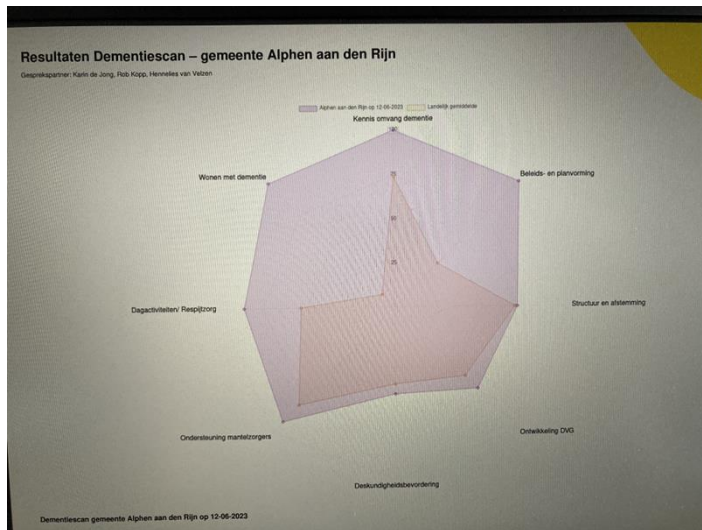
Additional actions:



- Training of workers (municipality)
- Theatre show
- Extra/new signposts in our townhall
- Workgroup dementia
- Workgroup to reach elderly migrants
- Research on the possibility to create a new, additional respite facility in our region to relieve informal carers

Dementia scan

1. Knowledge volume dementia
2. Policy and plans
3. Information exchange
4. Dementia friendly municipality
5. Professional development/training
6. Support informal carers
7. Daytime activities and respite
8. Housing





Dementia friendly municipality

In a dementia friendly municipality people with dementia can participate as long as possible in society and

is tailor-made guidance possible for people with dementia and their carers.

This is how a society is created in which as much people as possible know how to interact with people with dementia.