



## REYKJAVÍK GLOBAL FORUM WOMEN LEADERS

### INVITATION

[REGISTER HERE](#)

It is an honour to invite you to participate in the Reykjavík Global Forum – Women Leaders on 9-11 November 2020.

With the safety of the Reykjavík Global Forum community in mind and our commitment to ensuring that worldwide participation is possible, this year's edition will be an interactive digital gathering.

The Forum will be an important moment for women leaders to connect, take stock of the new global reality and share solutions to build a more equitable future. Over the course of three days, the Forum will feature plenary sessions to generate global visibility and momentum to advance women's leadership, interactive workshops to gather the insights of women leaders on how to build back better in key areas and Leaders Talks hosted by partners. This year, content will be captured in an outcome document, the **Reykjavík Manual**, which will outline actionable recommendations from women leaders around the world to build back better. The Forum and this document will support the work of UN Women, and outcomes will be brought to other important global convenings in the year ahead such as Davos.

Although the icy wind and Northern Lights of Iceland will be missed, the interactive digital format will let us bring Reykjavík to you, including the many elements that have made this gathering so special, from networking to the launch of the Reykjavík Index for Leadership, the Power, Together Awards and the Reykjavík Pledge.

Additionally, alongside the digital programme, small, local gatherings will be co-hosted by Icelandic embassies and consulates around the world in the form of "Reykjavík Satellites". In these events, which will adhere to local health and safety guidelines, participants will be asked to contribute to the Reykjavík Manual thereby enabling all voices to be heard.

Launched in November 2018 and co-hosted in partnership with the **Government and Parliament of Iceland**, the Reykjavík Global Forum – Women Leaders is where women leaders discuss and share ideas and solutions on how to further advance society and develop the number of women in leadership positions. At the Forum, one is not an attendee, but an invited leader joining the conversation - a Conversationist. In this spirit, the Forum annually convenes Conversationists including Presidents, Prime Ministers, Parliamentarians, leaders from business, academia, civil society, arts, media and more from all around the world.

Further information on the programme will be shared in due course with all Conversationists who have registered to attend. In the meantime, we invite you to visit our website: [www.reykjavikforum.global](http://www.reykjavikforum.global)

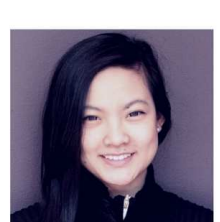
In the spirit of *Power, Together*, it would be a privilege to have you join us as a Conversationist to speak and to play an important role at this emblematic edition of the Reykjavík Global Forum – Women Leaders.

Yours sincerely,

Silvana Koch-Mehrin  
President of Women Political Leaders (WPL)

Hanna Birna Kristjánsdóttir  
Chair of the Reykjavík Global Forum  
Member of the WPL Board  
Senior Advisor Women's Leadership, UN Women

This year's Conversationists include:



**AMANDA NGUYEN**  
CEO and Founder, Rise Up



**AMINATA TOURÉ**  
President, Economic, Social and Environmental Council of Senegal (CESE), Prime Minister, Senegal (2013-2014)



**AMY WEAVER**  
President, Chief Legal Officer, Salesforce



**ANN CAIRNS**  
Executive Vice-Chair, Mastercard



**ATSUSHI SUNAMI**  
President, Sasakawa Peace Foundation



**BELÉN GARIJO**  
Chief Executive Officer, Healthcare; Member of the Executive Board, Germany



**BLESSING OMAKWU**  
Equality Activist, Founder, The She Tank



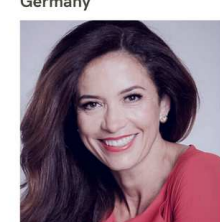
**CAROLINE WOŹNIACKI**  
Former Professional Tennis Player



**CHRISTINE HEENAN**  
Founder and President, Clarendon Group



**CHRISTY TANNER**  
Executive Vice-President, General Manager, CBS News Digital



**CLAUDIA ROMO EDELMAN**  
Special Advisor, We Are All Human Foundation



**DAVID CRUICKSHANK**  
Chair, Board of Directors, Social Progressive Imperative (SPI)



**DEBORAH BERKE**  
Architect, Dean, Yale School of Architecture



**DENIS MUKWEGE**  
Founder, Medical Doctor, Nobel Peace Prize Laureate (2018), Member, WPL Advisory Board



**ELISA TARAZONA GINES**  
CEO, Ribera salud



**ERNA SOLBERG**  
Prime Minister, Norway (2013-present)



**FELICIA KNAUL**  
Director, Institute for Advanced Study of the Americas, University of Miami



**GUÐLAUGUR THÓR THÓRÐARSON**  
Minister of Foreign Affairs and Development Cooperation, Iceland



**HAFSAT ABIOLA**  
President, Women in Africa



**HELEN CLARK**  
Prime Minister, New Zealand (1999-2008), Administrator, United Nations Development Programme (2009-2017), Chair, WPL Board



**HILTRUD WERNER**  
Member, Board of Management responsible for Integrity and Legal Affairs, Volkswagen AG



**IRIS LOWE-FRIEDRICH**  
Chief Medical Officer, UCB



**JESS PHILLIPS**  
Member, House of Commons, Shadow Minister for Domestic Violence and Safeguarding, UK, WPL Ambassador



**JOSÉ MANUEL BARROSO**  
Chief Executive Officer, Healthcare; Member of the Executive Board, Germany



**JULIA NOVY-HILDESLEY**  
Professor of the Practice, Executive Director, Stanford's Change Leadership for Sustainability Program



**JULIA GILLARD**  
Prime Minister, Australia (2010-2013), Chair, Global Institute for Women's Leadership



**KATRIN JAKOBSDÓTTIR**  
Prime Minister, Iceland, Chair, Council of Women World Leaders (CWWL)



**KOLINDA GRABAR-KITAROVIĆ**  
President, Croatia (2015-2020), Chair, Council of Women World Leaders (2019-2020)



**MAMI MIZUTORI**  
Special Representative and Head, UN Secretary-General for Disaster Risk Reduction (UNDRR)



**MARIE-LOUISE COLEIRO PRECA**  
President, Eurochild (2014-2019), Member of WPL Board



**MELANNE VERVEER**  
Executive Director, Institute for Women, Peace, and Security, Georgetown University, Ambassador at Large for Global Women's Issues (2009-2013), United States



**MICHELLE HARRISON**  
Global CEO, Public Division, Kantar



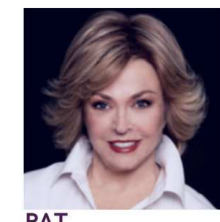
**MICHELLE NUNN**  
President and CEO, CARE, Co-Chair, Reykjavík Global Forum 2020



**OBIAGELI 'OBY' EZEKWESILI**  
Senior Economic Adviser, The Africa Economic Development Policy Initiative (AEDPI), Co-Founder, #BringBackOurGirls Movement



**OLAFUR ELIASSON**  
Artist



**PAT MITCHELL**  
Editorial Director, TEDWomen



**PHUMZILE MLAMBO-NGCUKA**  
Executive Director, UN Women, Co-Chair, The Reykjavík Global Forum 2020



**REBECA GRYNSPAN**  
Vice-President, Costa Rica (1994-1998), Secretary-General, Ibero-American General Secretariat (SEGIB), Under-Secretary General, United Nations (2010-2014)



**RONA KOTECHA**  
Executive Director, Mara Foundation



**ROSALÍA ARTEAGA**  
Executive President, FIDAL Foundation, President, Ecuador (1997), Vice-President, Ecuador (1996-1998), Member, WPL Board



**SHOUKEI MATSUMOTO**  
Buddhist Monk, Author, 'A Monk's Guide to a Clean House and Mind'



**SUSAN COATAR**  
Vice-President, Chief of Staff, Centene Corporation



**THORAYA OBAID**  
Chair, W20, Former Member, Majlis Ash-Shura of the Kingdom of Saudi Arabia



**YONCA DERVISOGLU**  
Chief Marketing Officer (CMO), Google



**TAO ZHANG**  
Deputy Managing Director, IMF

[REGISTER NOW](#)

Full details on the Forum and reports from last year's edition can be found on: [www.reykjavikforum.global](http://www.reykjavikforum.global)

CO-HOSTS

