

**Henning
Larsen** —

Træbyggeri som del af den grønne omstilling

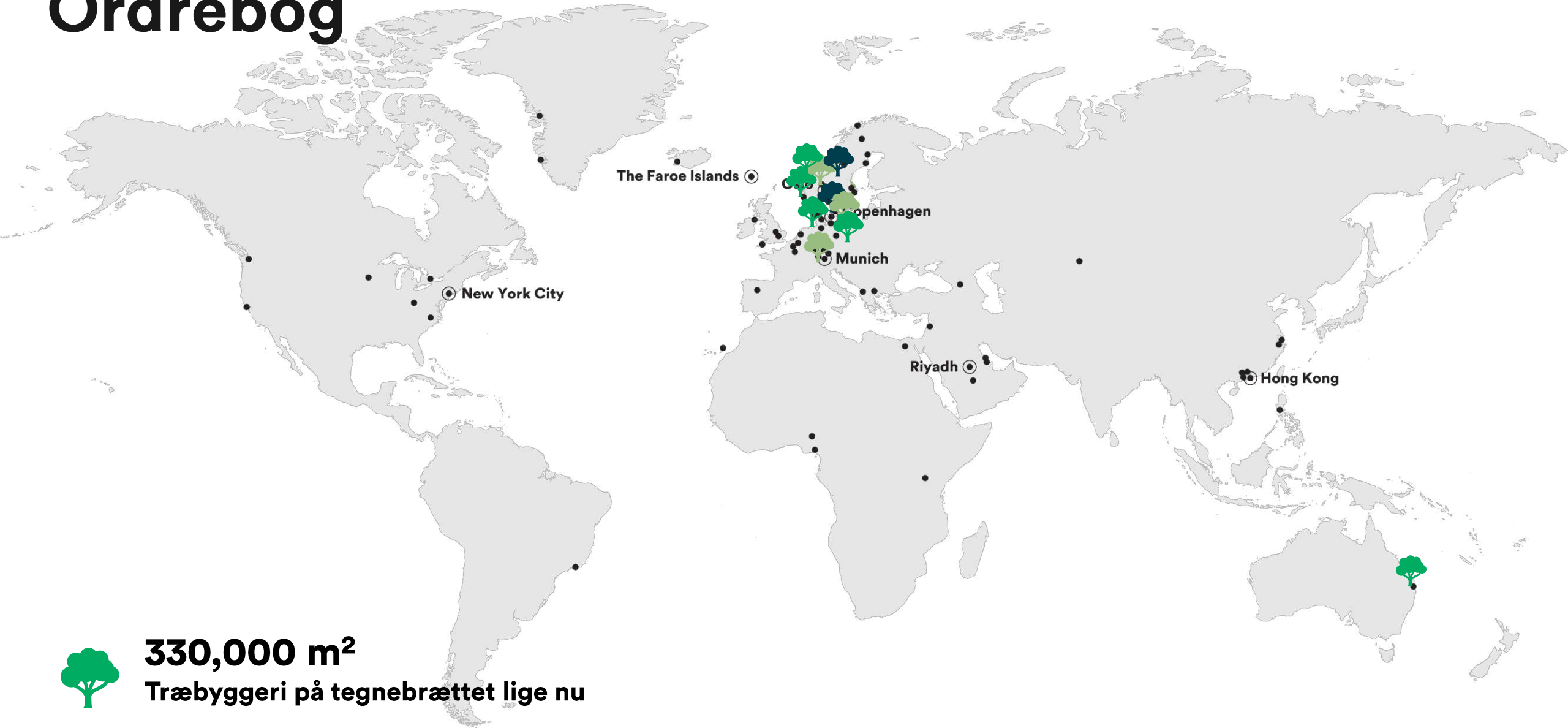
Signe Kongebro
Partner, Henning Larsen Architects



A close-up photograph of a tree trunk, showing the intricate, concentric growth rings of the wood. The rings are tightly packed and radiate from a central point, creating a complex, organic pattern. The colors range from light tan to dark brown, highlighting the natural texture and grain of the wood. The lighting is soft, emphasizing the three-dimensional quality of the rings.

Looks, feels and smells good

Ordrebog



330,000 m²

Træbyggeri på tegnebrættet lige nu

Ordrebog

NYHEDER 4. NOV. 2020 KL. 04.00



FREDERIK BUHL KRISTENSEN
Redaktør

LÆS ARTIKLEN SENERE



BÆREDYGTIGT BYGGERI

Nye regler har genstartet kampen om at blive Danmarks højeste: AP, Henning Larsen og Rambøll vil bygge 9 etager i bærende træ i København

I første omgang lød svaret fra Københavns Kommune, at brandreglerne stod i vejen for AP Pensions planer om et 35 meter højt kontorbyggeri i bærende træ i Nordhavn. Men nye regler i bygningsreglementet har genstartet byggeriet.

FOR ABONNENTER

AUTOMATISK OPLÆSNING



I lang tid så drømmen ud til at mislykkes.

AP Pensions forsøg på at skabe et flagskib inden for den bæredygtige omstilling af byggeriet – en ni etagers kontorejendom i bærende træ i Københavns Nordhavn – var stødt på grund hos kommunen.

Som man har hørt det så mange gange før, lød svaret, ifølge AP, fra Københavns Kommune til pensionsselskabet, at de nationale regler om brandrådgivning stod i vejen for, at kommunen kunne give grønt lys til byggeriet.

Det var tilbage i februar. For coronapandemien lukkede landet ned, men også for Københavns Kommune meldte ud, at det nu bliver lettere at gå over den tidligere grænse for træbyggeri på fire etager.

11/4/2020

Henning Larsen | Establishing a New Urban Prototype - Right in Volkswagen's Heimat

Henning
Larsen



Establishing a New Urban Prototype - Right in Volkswagen's Heimat

Our new masterplan for VW's home city of Wolfsburg sets the standard for a more connected and livable European city.

We're excited to share our concept for Wolfsburg Connect, a 13.6 hectare masterplan in Wolfsburg's Nordkopf district. The scheme establishes a prototype for livable small-scale urbanism, an increasingly crucial typology as the world's population continues to urbanize. For Volkswagen, whose agenda-setting mobility technology research will be conducted in Wolfsburg, luring top talent to the area means not just offering the best workplace, but the most attractive place to live. It means creating the framework for a city as diverse as the talents and minds it hopes to attract.

"We are designing an inclusive city on human terms – an approach that means putting emphasis on social life and accessibility," explains Louis Becker, Henning Larsen Design Principal. "Together with Volkswagen, there is the

<https://henninglarsen.com/en/news/archive/2020/11/03-establishing-a-new-urban-prototype-right-in-volkswagens-heimat/>

1/5

Råhuset binder ca. 70% af en bygnings CO2

The building material pyramid **Byggemateriale pyramide**

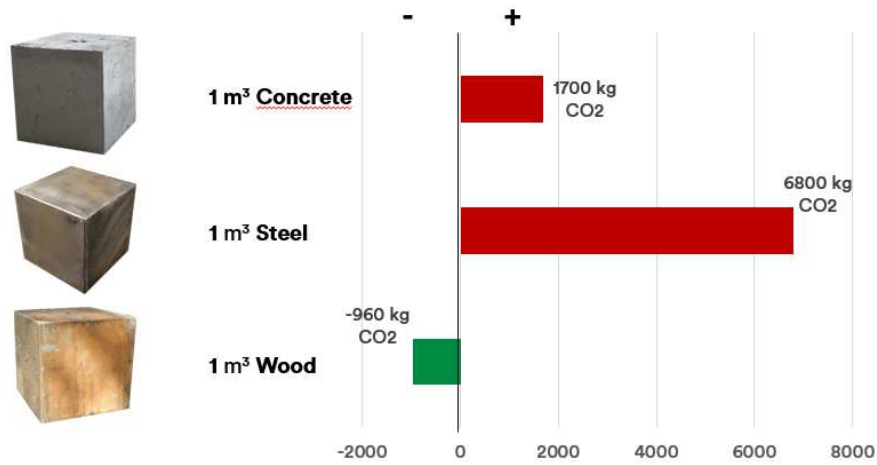
Kg CO2/m2 material Kg CO2/m2 materiale

GWP analysis based on EPD's (ISO 15804) Phase A1-A3 production.

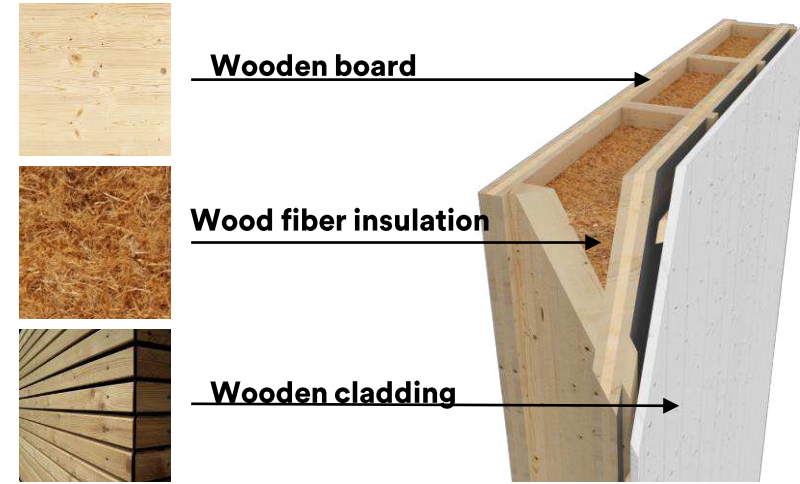
GWP-analyser udarbejdet på baggrund af EPD's (ISO 15804) Phase A1-A3 production.



CO2



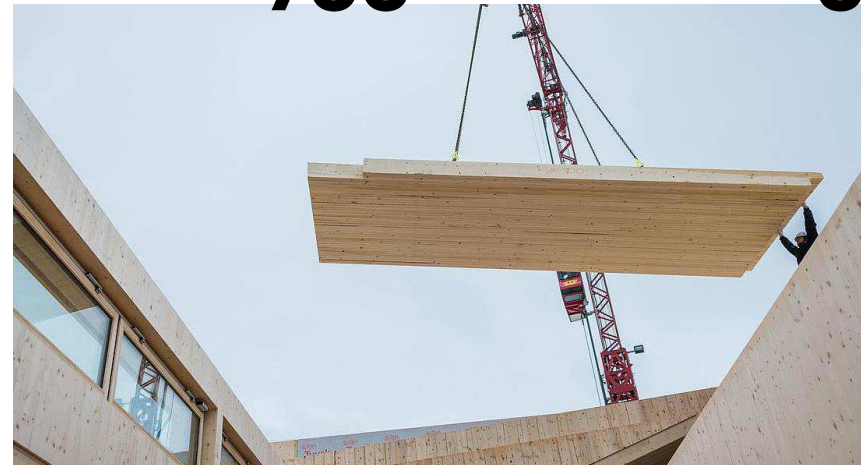
Kemifri



Lang levetid



Kort byggetid = Billigere



Case: Fellesbygget Campus Ås, Norge





Case: Restaurant i Stockholm





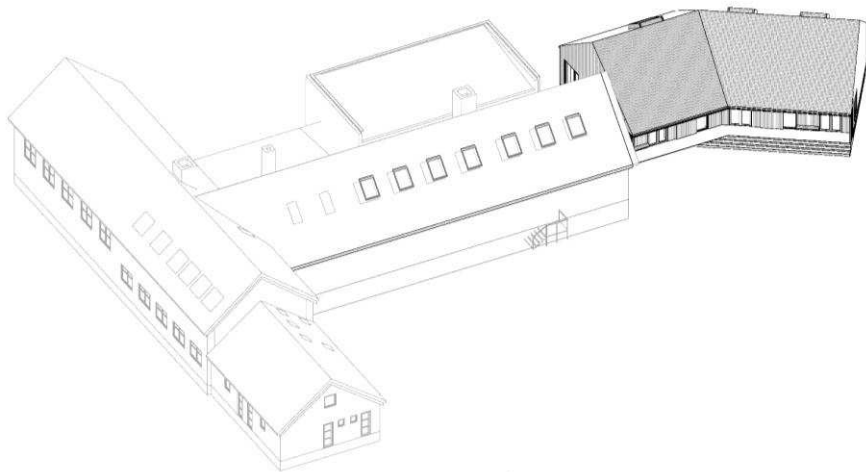
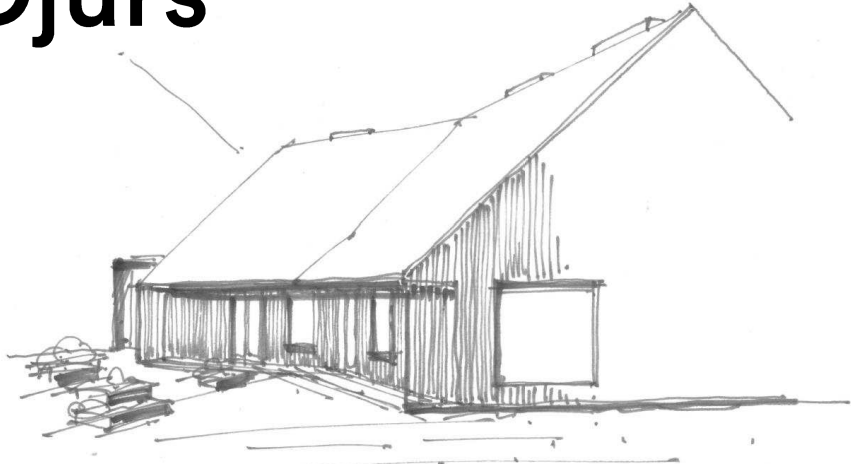
Case: Brand experience Center, Göteborg



Experience Center in Sweden



Case: Feldballe Skole, Djurs





Case: Vejlands Kvarter København









An architectural rendering of a modern residential complex. The scene is viewed from a rooftop terrace with a wooden deck, a metal chair, and a table with a meal. The terrace is enclosed by a glass railing. In the background, there are several multi-story buildings with a mix of wood and metal facades, some with balconies and rooftop gardens. The buildings are set in a landscaped area with trees and a central courtyard. The sky is bright with a sun flare in the top left corner. The word "Tak" is overlaid in the center of the image.

Tak