

# Mineralske råstoffer

**Jørgen T. Hammeken-Holm**

Departementschef

Departementet for Mineralske Råstoffer

NAALAKKERSUISUT

GOVERNMENT OF GREENLAND



ANGAJU ITTUK

# Fangst og fiskeri- kultur



# Økonomisk selvbårenhed



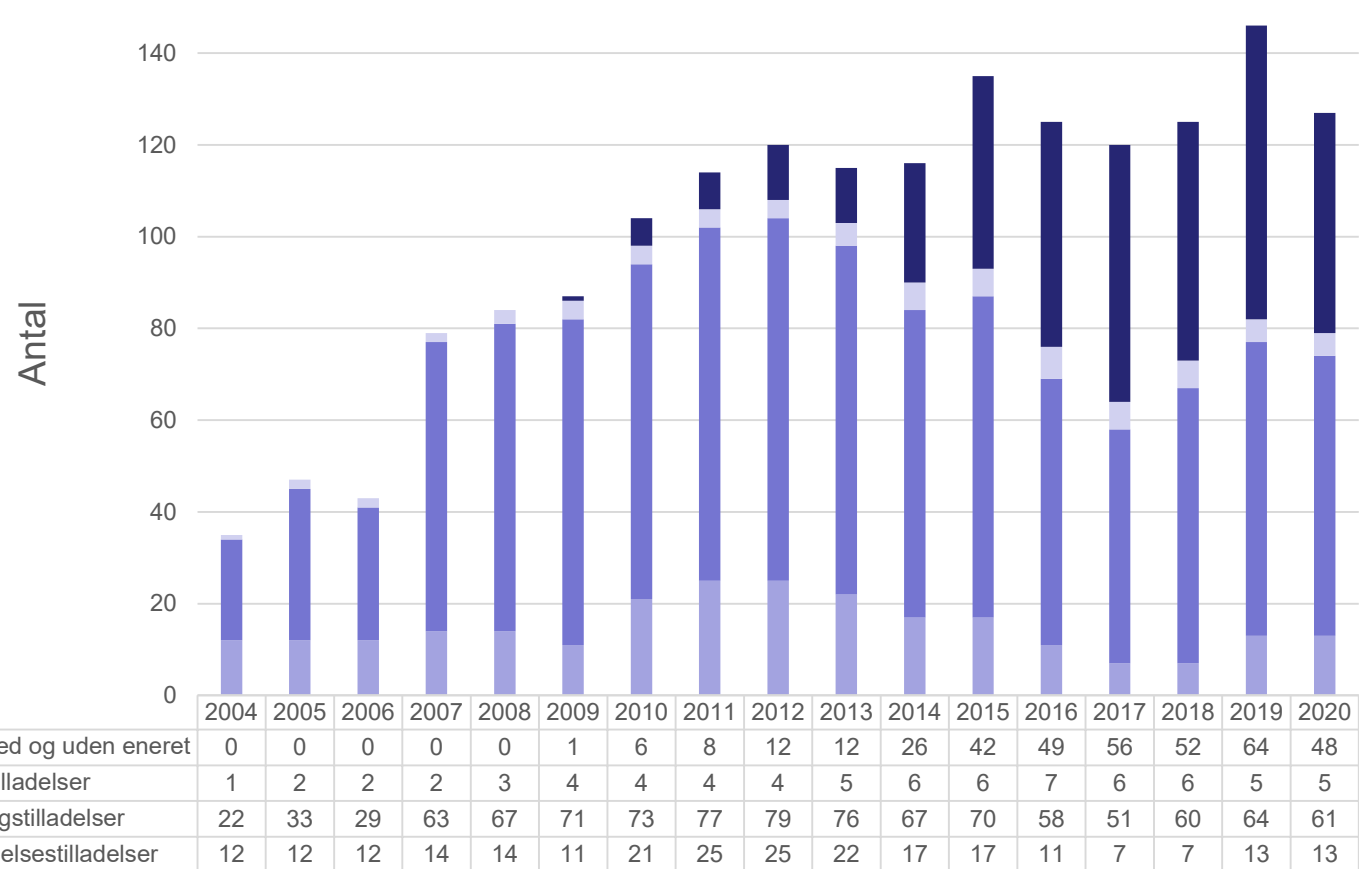
NAALAKKERSUISUT

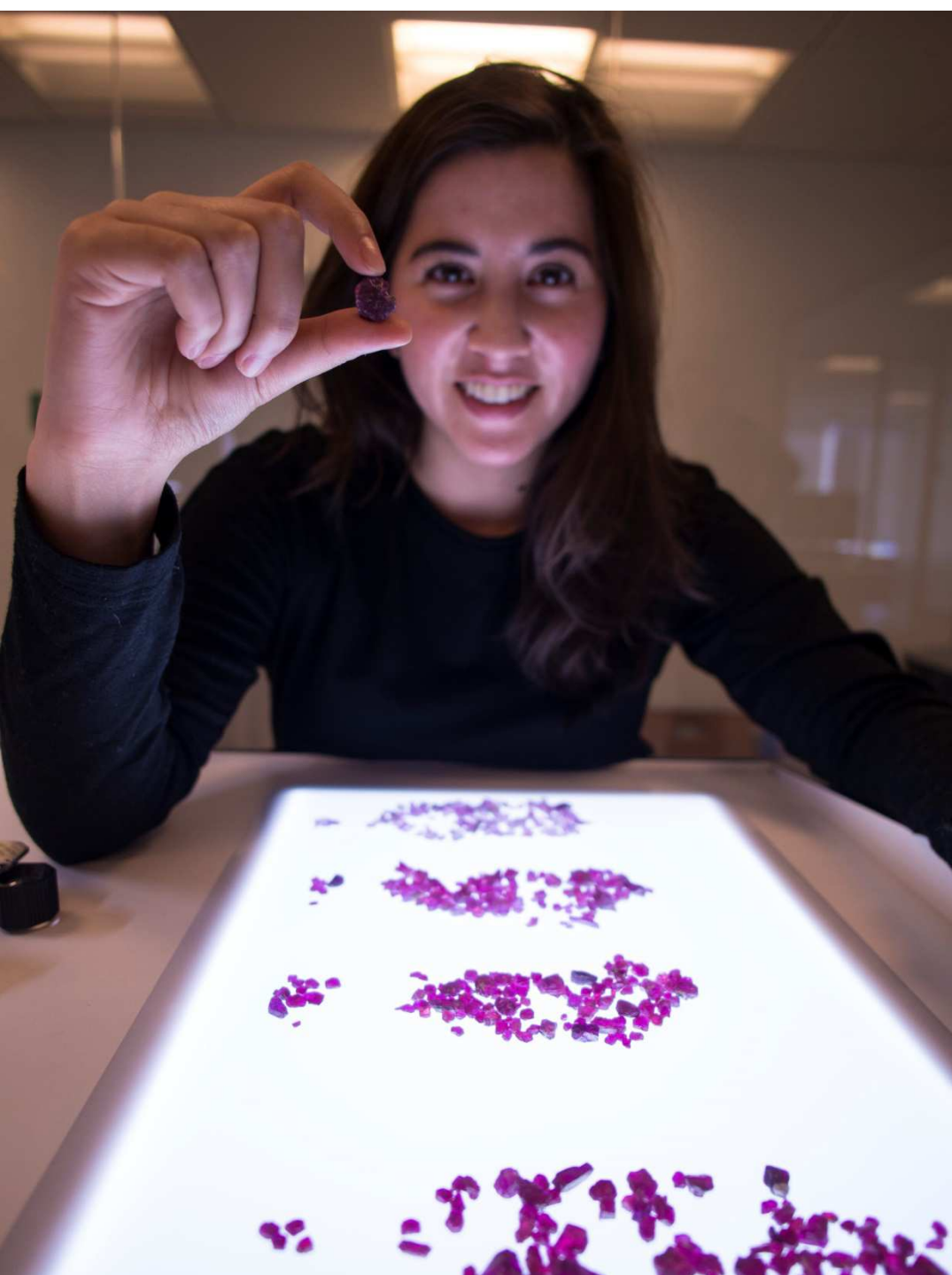
GOVERNMENT OF GREENLAND



# Lang minehistorie

# Antallet af tilladelser





NAALAKKERSUISUT

GOVERNMENT OF GREENLAND



# Aappaluttoq Rubin- og safirmine



# Greenland Ruby A/S

- Selskabet finansieres af den norske LNS-koncern (90%) og et grønlandske selskab Greenland Venture A/S (10%).
- Produktionsfaciliteter er både i Nuuk (rensning og sortering) og i Aappaluttoq minen. Derudover, behandles nogle af rubinerne i udlandet.
- Drift af minen forestås af LNS Greenland A/S (søsterselskab til Greenland Ruby A/S).
- Produktionen startede 11. maj 2017
- Arbejdsstyrken under produktionen er på nuværende tidspunkt ca. 30 personer (100% lokale) De fleste (ca. 20) i minen og resten i Nuuk.



21-08-2020





NAALAKKERSUISUT

GOVERNMENT OF GREENLAND

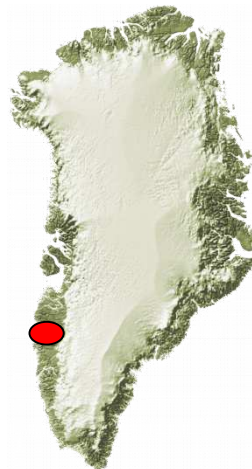


# White Mountain anorthositmine



# Hudson Greenland A/S

- Selskabet fik en udnyttelsestilladelse i 2017.
- Projektet er på nuværende tidspunkt i starten af produktionsfasen, som startede i august 2019.
- Kapitalinvestering på ca. 200 mio. DKK.
- Forventer at bryde 285.000 tons anorthosit årligt. Hvoraf 85.500 tons er tailing.
- Anorthosit nok i forekomsten til brydning i 120 år.
- Ca. 30 ansatte i projektet.



## Anorthosit anvendes til



Paint



E-Glass Fiberglass



Aluminum Cans



Plastic



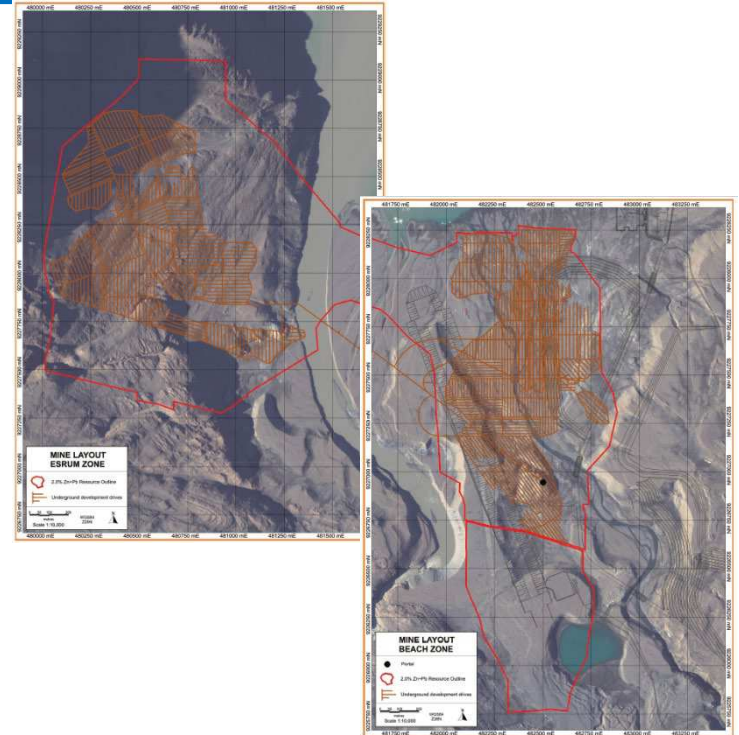
# Citronen Fjord zinc-bly projekt





# Ironbark A/S

- Selskabet fik en udnyttelsestilladelse i 2016.
- Projektet er ikke gået i anlægsfasen endnu.
- Kapitalinvestering på ca. 328 mio US\$.
- De første 11 år vil det være mining i undergrunden og de sidste 3 år vil det være open pit mining.
- Procesanlægget vil have en kapacitet på 3,3 Mtpa malm.
- Forventede antal medarbejdere under minens levetid ses i skemaet til højre.



Phase	Year	Number of Employees
Construction	-1 and 0	300
Production	1 - 2	362
Production	3 - 10	470 (290 on site year round)
Production (year 11)	11	455
Production (year 12 - 13)	12 - 13	333
Production (year 14)	14	200
Closure	15 - ?	94

# Nalunaq A/S

**Produkt:** Guld

**Lokalitet:** Ved Nanortalik i Sydgrønland.

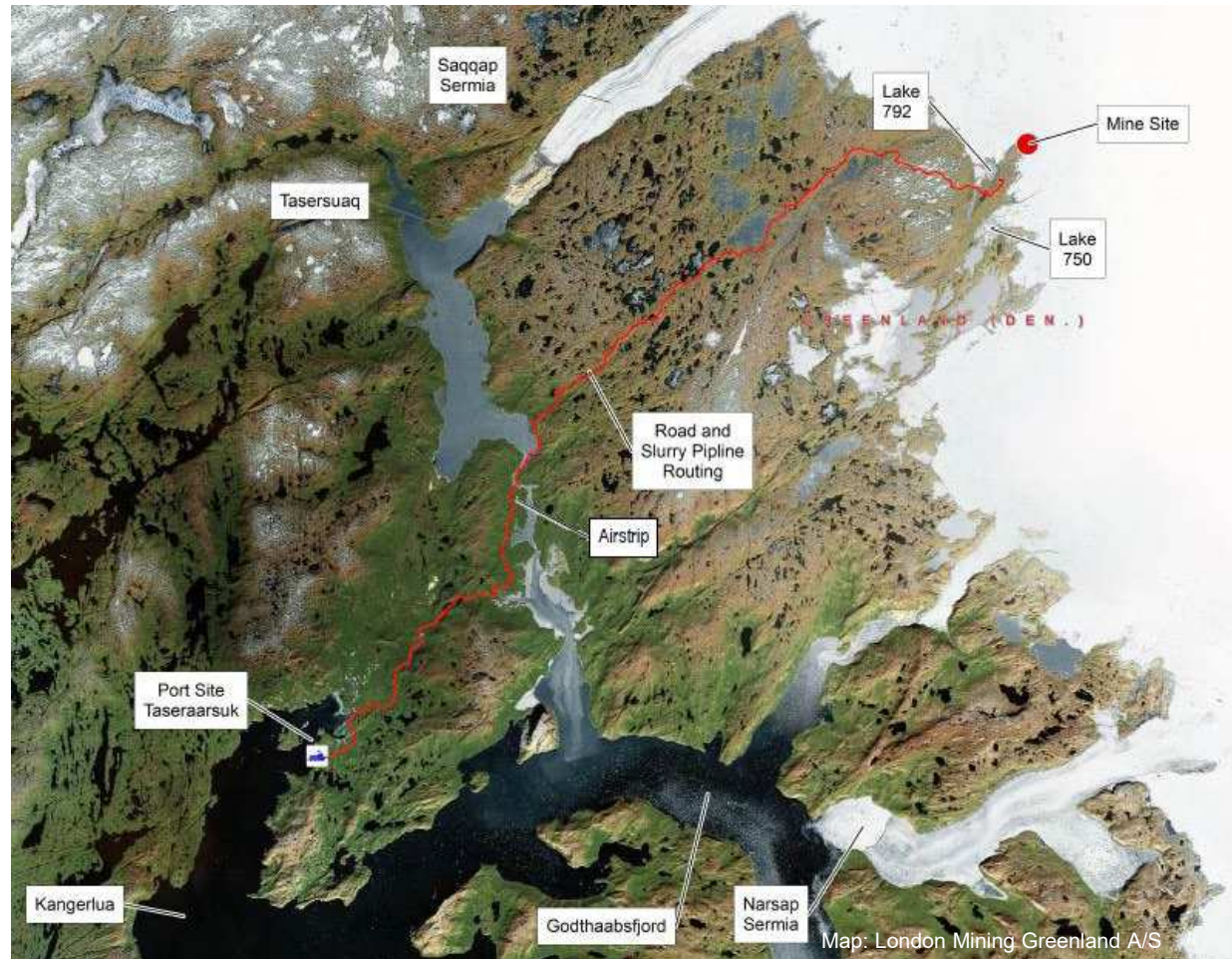




# London Mining Greenland A/S

**Produkt:** Jernmalm

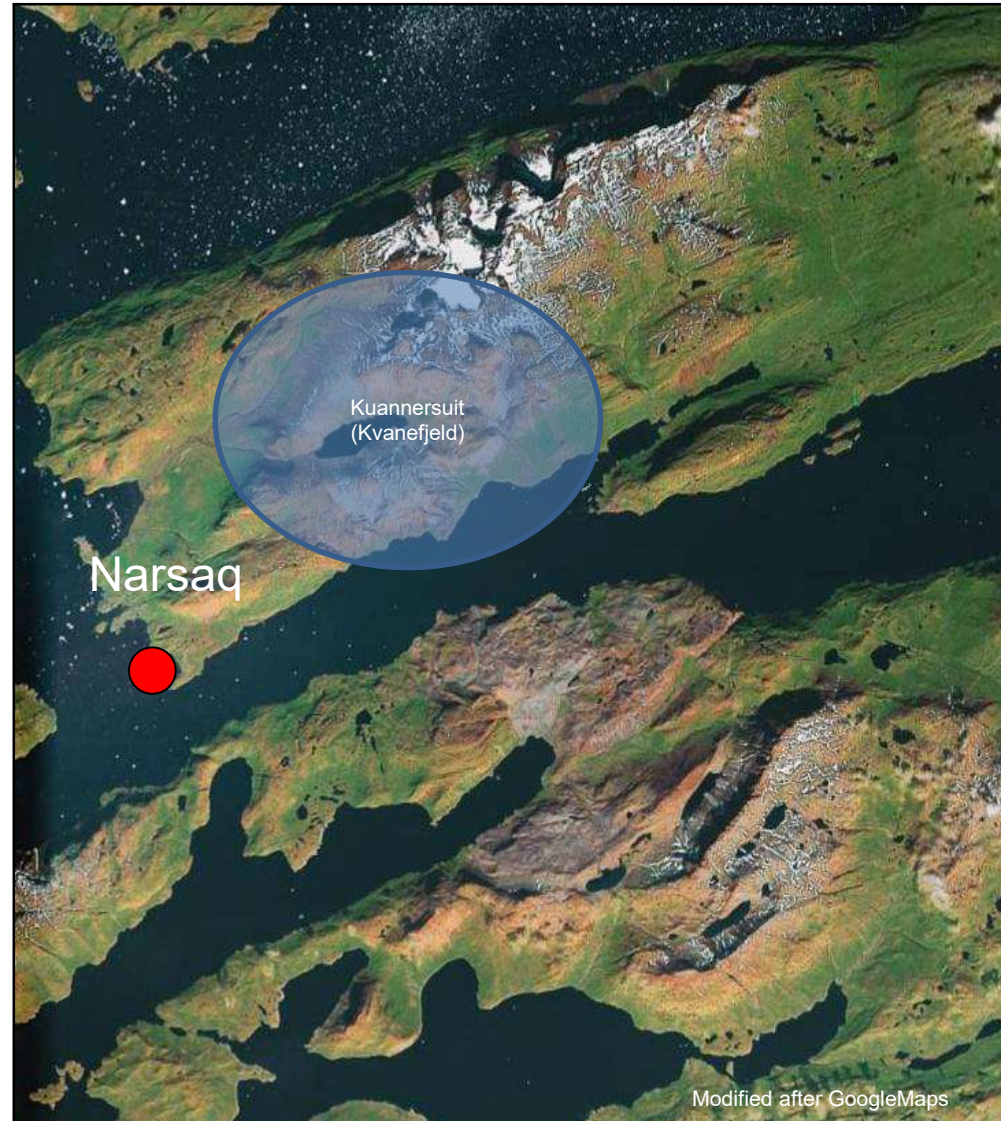
**Lokalitet:** Isukasia  
(Isua), 150 km nordøst  
for Nuuk



# Greenland Minerals A/S

**Produkter:** REE (sjældne jordarter), uran, zink og fluspat (fluorit)

**Lokalitet:** Kuannersuit (Kvanefjeld) 6 km nordøst for Narsaq





# TANBREEZ Mining Greenland A/S

**Produkter:** Zirconium, REE (sjældne jordarter), tantal, niobium og yttrium

**Oparbejdning:** Magnetisk og kemisk oparbejdning

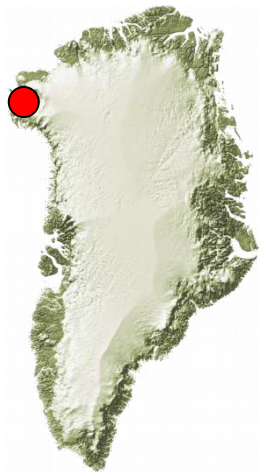
**Lokalitet:** Killavaat Alannguat (Kringlerne) 10 km sydøst for Narsaq



# Dundas Titanium A/S

**Produkt:** Titanium,  
Ilmenit sand (fra  
strandbredden)

**Lokalitet:** Moriusaq, syd  
for Qaanaaq







# Stort mineralpotentiale







## Unofficial consolidation of the Mineral Resources Act

Greenland Parliament Act No. 7 of 7 December 2009 on mineral resources and mineral resource activities (the "Mineral Resources Act") as amended by

Greenland Parliament Act No. 26 of 18 December 2012 (marked in red)

Greenland Parliament Act No. 6 of 8 June 2014 (marked in blue)

Greenland Parliament Act No. 16 of 3 June 2015 (marked in green)

Greenland Parliament Act No. 34 of 28 November 2016 (marked in orange)

### Part 1

#### General rules

1.–(1) This Greenland Parliament Act aims to ensure appropriate exploitation of mineral resources and use of the subsoil for storage or purposes relating to mineral resource activities as well as regulation of matters of importance to mineral resource activities and subsoil activities.

(2) The Greenland Parliament Act aims to ensure that activities falling within the scope of the Act are carried out in a sound manner as regards safety, health, the environment, resource exploitation and social sustainability as well as appropriately and in accordance with acknowledged best international practices under similar conditions.

2.–(1) The Greenland Self-Government has the right to control and use mineral resources in the subsoil of Greenland.

(2) The following activities may be performed only under a licence granted by the Government of Greenland under the rules of the Greenland Parliament Act; but see sections 45-48 below:

- (i) Prospecting, exploration and exploitation of mineral resources in Greenland as well as export of mineral resources from Greenland.
- (ii) Use of the subsoil for storage or purposes relating to mineral resource activities.
- (iii) Use of energy from water, wind or the subsoil for activities falling within the scope of the Greenland Parliament Act.
- (iv) Establishment and operation of pipelines for activities falling within the scope of the Greenland Parliament Act.

(3) The Greenland Self-Government may perform scientific and practical surveys of a general or mapping nature relating to mineral resources, mineral resource activities, use of the subsoil for storage or purposes relating to mineral resource activities, related energy activities, related pipeline activities or other related activities.

(4) The Geological Surveys of Denmark and Greenland (GEUS) and the Danish Centre for Environment and Energy (DCE) may, however, conduct research of special relevance to mineral resource exploration in Greenland, to the extent and as long as the research is conducted to meet the Government's obligation to make such research available to the Government of Greenland under section 9(4) of the Act on Greenland Self-Government.

3.–(1) The Mineral Resource Authority under the Government of Greenland is the overall

# Stærk regulatorisk base





*Leiff Josefsen*

# Stabilt politisk system



NAALAKKERSUISUT

GOVERNMENT OF GREENLAND



NAALAKKERSUISUT

GOVERNMENT OF GREENLAND

# GRØNLANDS MINERALSTRATEGI 2020-2024

Departementet for Råstoffer  
Februar 2020





Greenland Portal

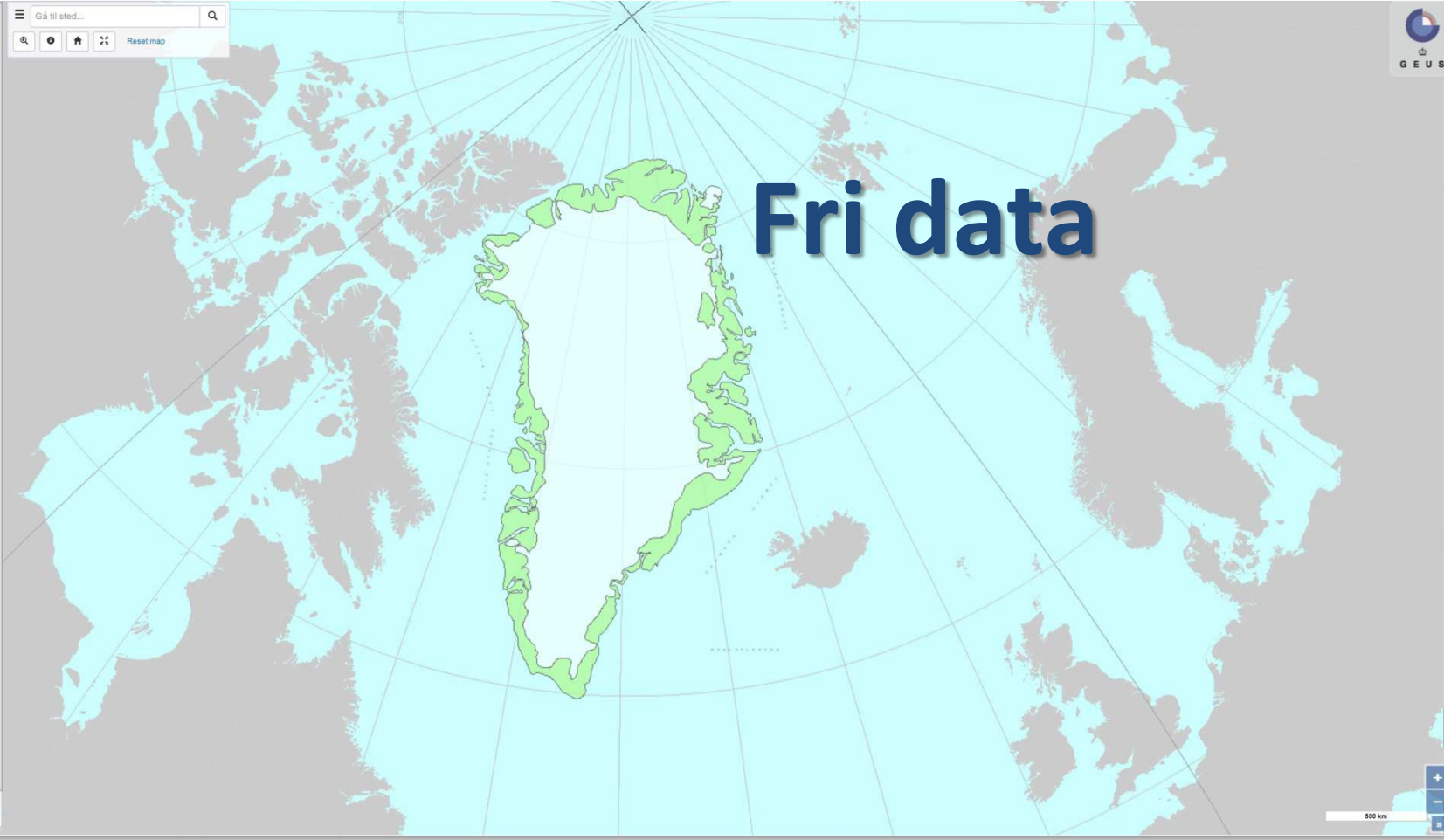
NAALAKKERSUISUT  
GOVERNMENT OF GREENLAND

Explore the resources and geoscientific data of Greenland.  
Maps and data can be acquired through our webshop.



Terms of use | Web services

- Minerals
  - Mineral occurrences
  - Gemstones (all)
  - Intrusions
  - Mineral Assessment Tracts
- Reports
- Licences
  - Geological maps - digital
  - Geological maps - scanned
  - Topographic maps - digital
  - Geochemistry
  - Geophysics - individual surveys
  - Geophysics - background maps
- ASTER
- Geochronology
- Drill Cores
- Geography
  - Photography
- Geological environment
- Field data
- Data compilations

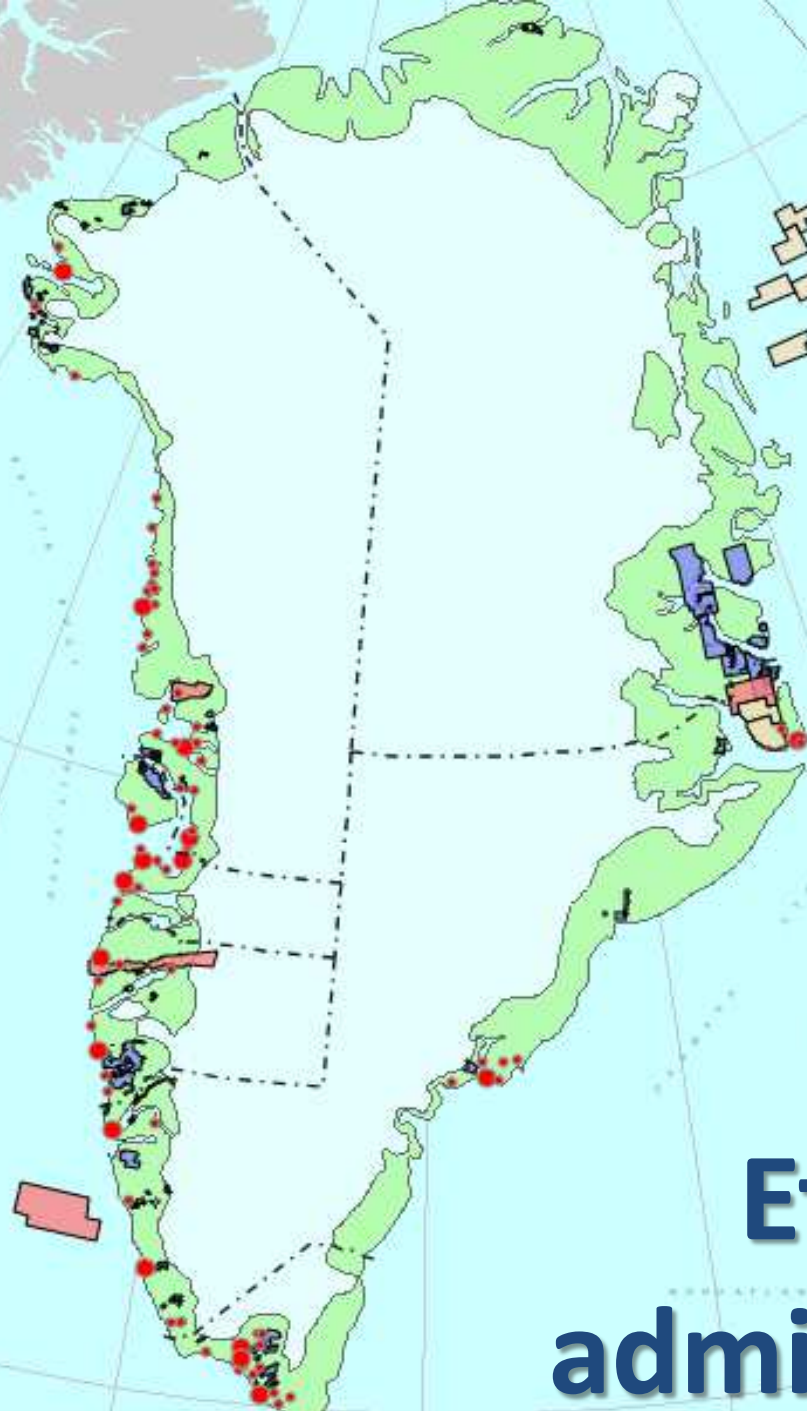


**Fri data**



NAALAKKERSUISUT

GOVERNMENT OF GREENLAND



**Effektiv  
administration**



NAALAKKERSUISUT

GOVERNMENT OF GREENLAND



Lokal support fra  
serviceselskaber





Konkurrencedygtigt  
royalty/beskatning



Tak!

