

Klima-, Energi- og Forsyningsudvalgets høring om biomasse, Landstings salen, Christiansborg

# Biomasse i et livscyklusperspektiv

## - CO<sub>2</sub> neutral?

---



Jannick Schmidt, Ph.D. Associate Professor

København 6. februar 2020

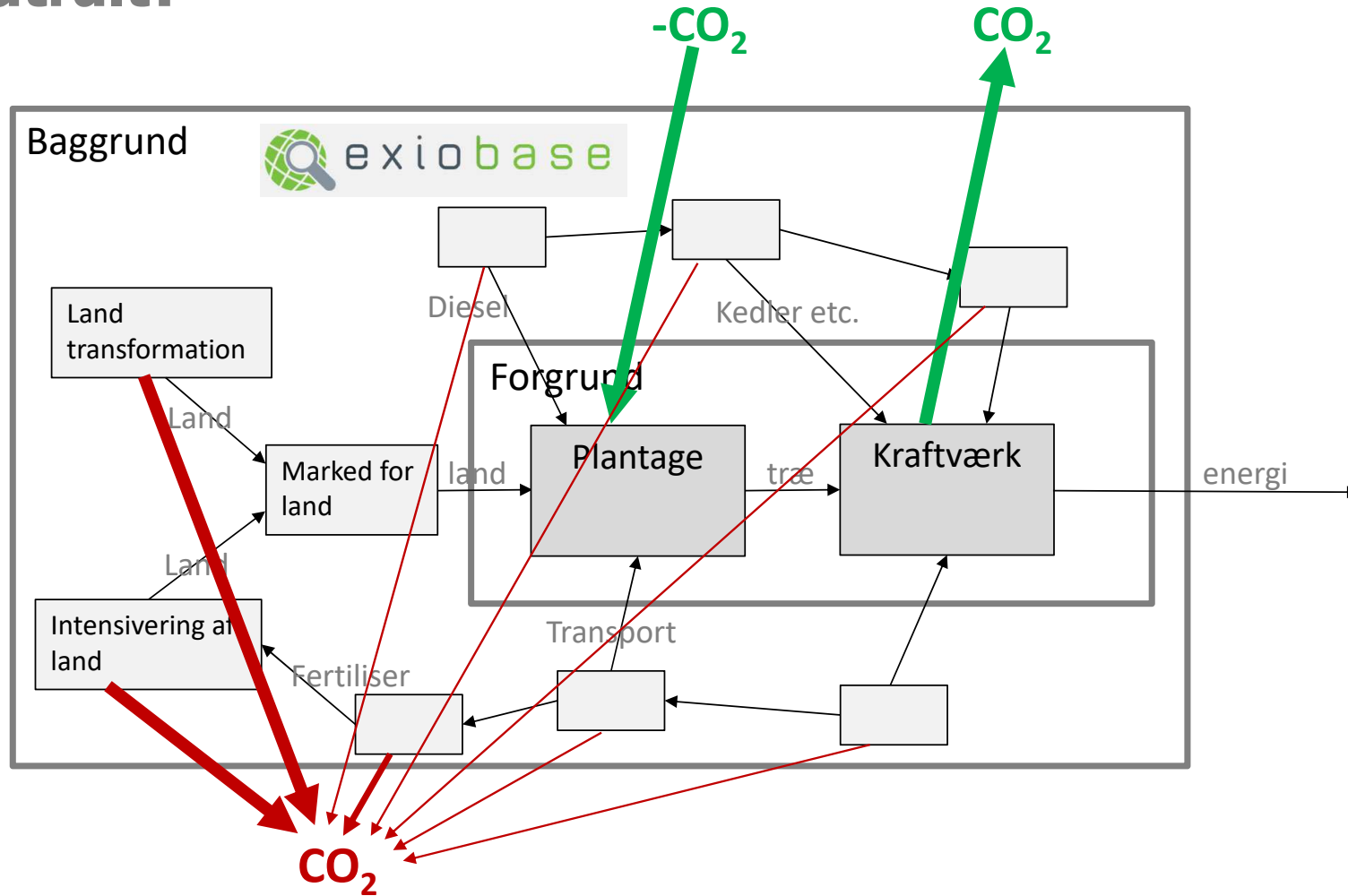
Aalborg University, Rendsburggade 14, 9000 Aalborg, Denmark  
[www.dcea.dk](http://www.dcea.dk)



**AALBORG UNIVERSITY**  
DENMARK

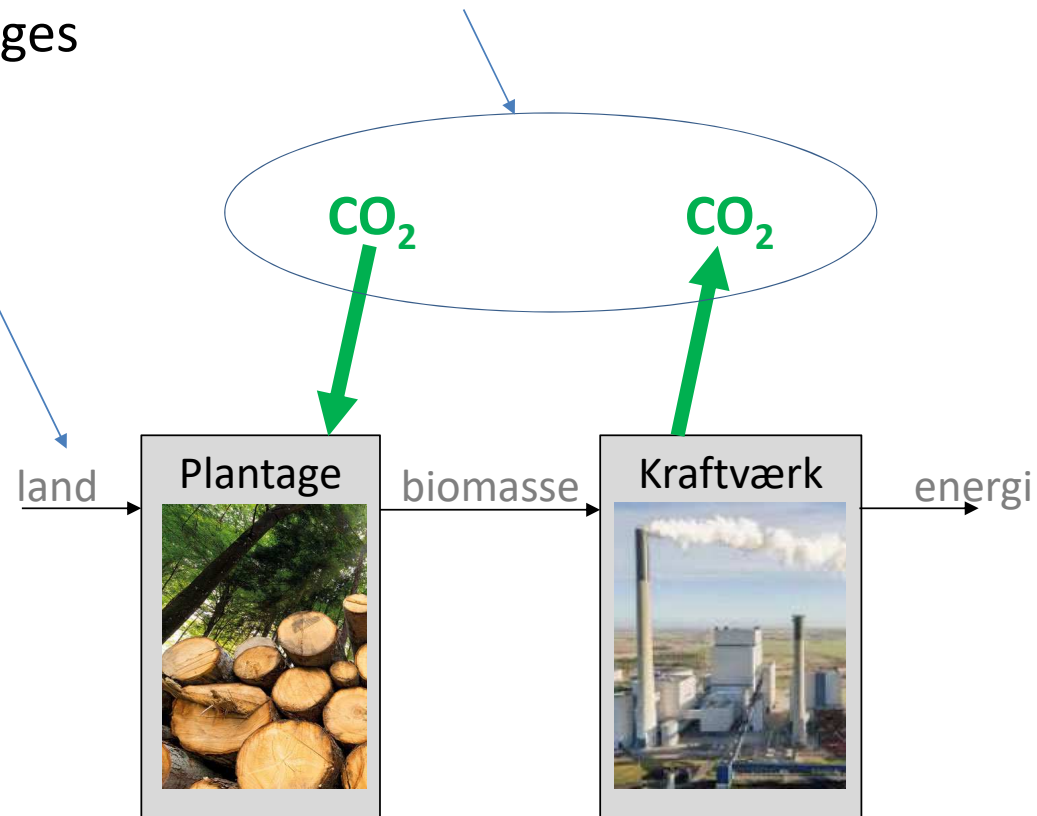
# Biomasse i et livscyklusperspektiv

- CO<sub>2</sub> neutralt?



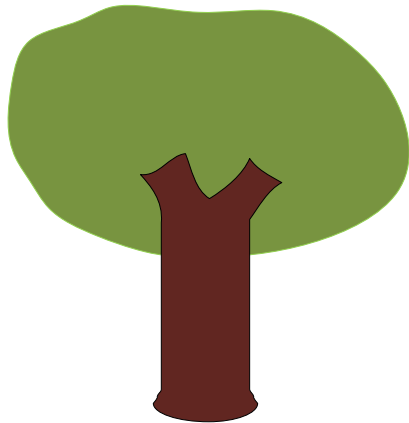
# Biomasse med stor drivhusgasudledning

1. Forskel i timing for emission og optag af CO<sub>2</sub>
2. Land use changes



# 1) Forskel i timing for emission/optag af CO<sub>2</sub>

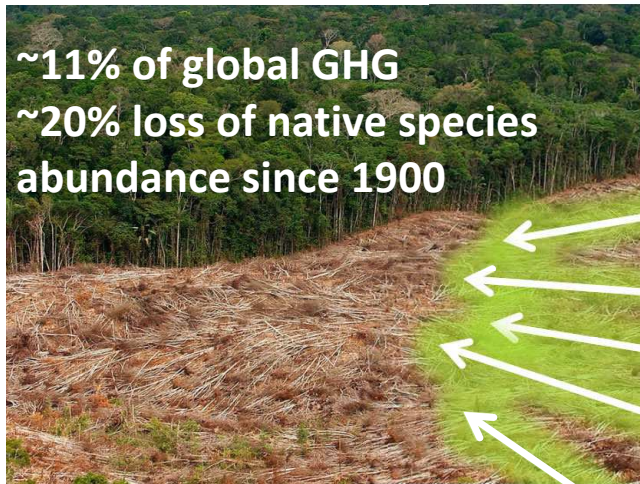
$$\Sigma \text{CO}_2 = 0$$



- CO<sub>2</sub> neutral over tid
- Temporal øget CO<sub>2</sub> i atm
- Ikke klima-neutralt!

## 2) Land use changes

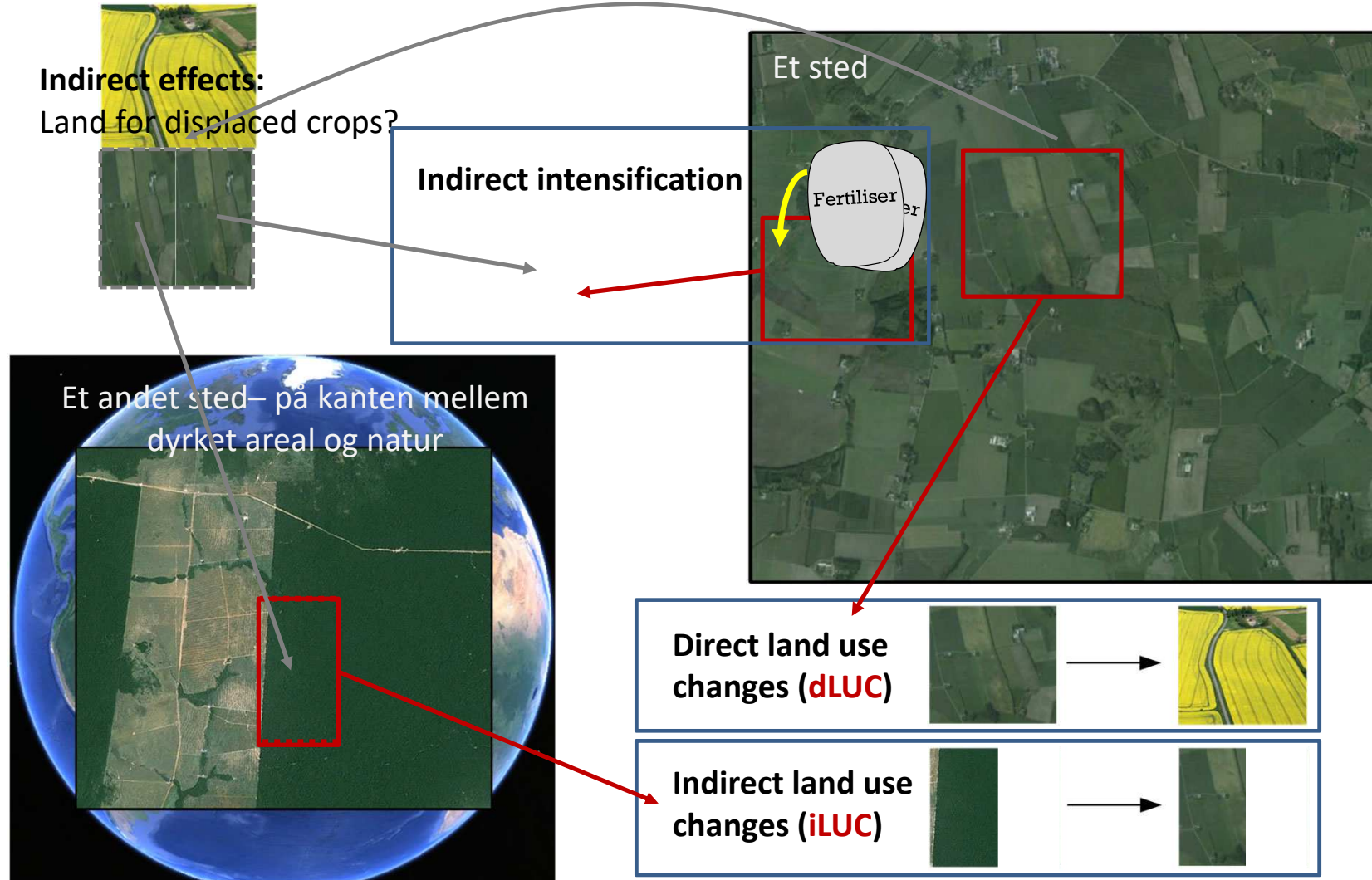
### - Linking deforestation with it's drivers



IPCC (2014). Climate Change 2014: Synthesis Report  
UN Report (2019). Nature's Dangerous Decline  
'Unprecedented'; Species Extinction Rates 'Accelerating'.  
<https://www.un.org/sustainabledevelopment/blog/2019/05/nature-decline-unprecedented-report/>

## 2) Land use changes

Effect fra 1 ha ekstra rapsmark et sted?



# Biomasse med mindre drivhusgasudledning

Forskul i timing for CO<sub>2</sub> emissioner

**Effekt =**

CO<sub>2</sub> kraftværk  
minus  
CO<sub>2</sub> nedbrydning i skoven

**Ikke klima-neutralt**

