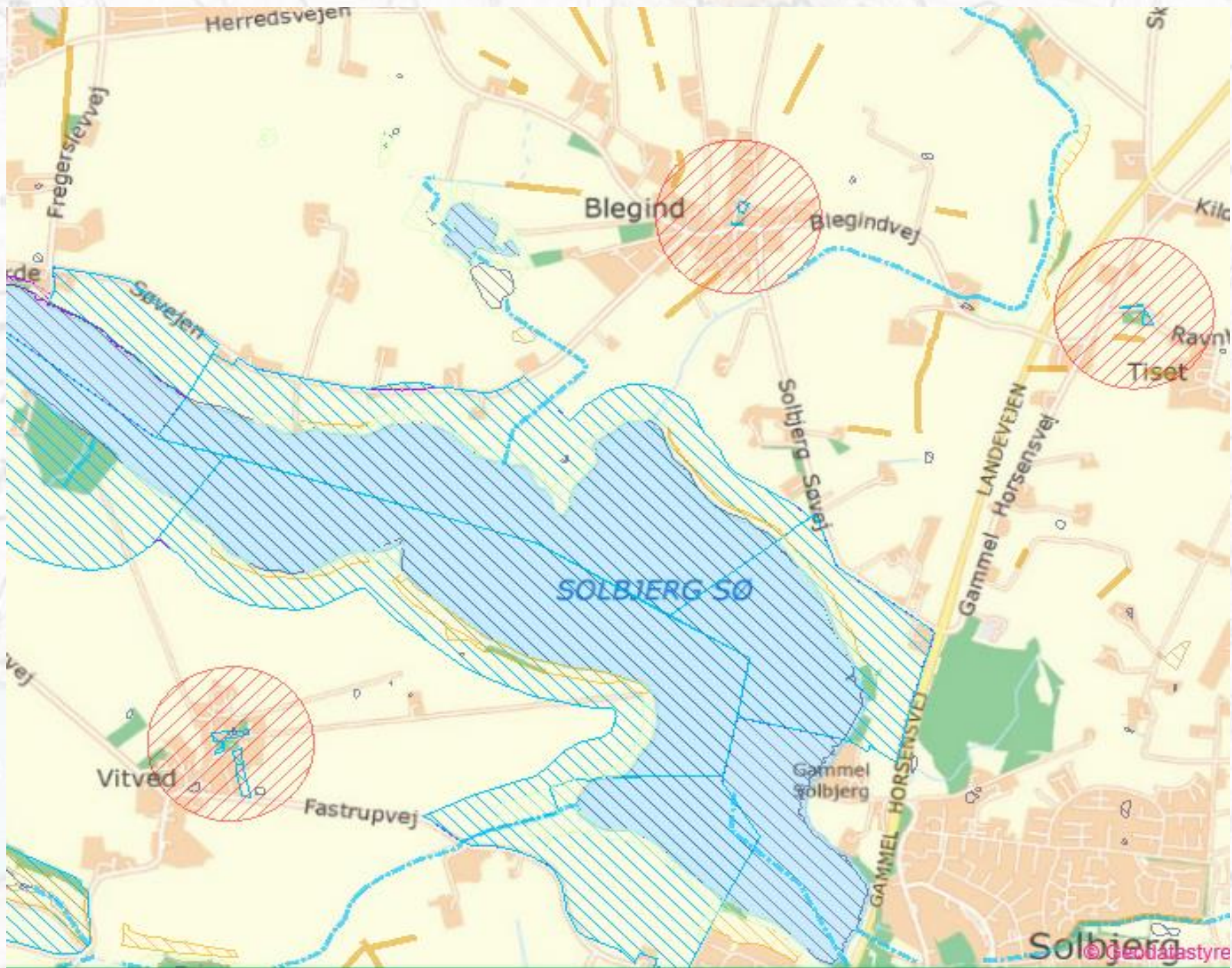


A topographic map of a coastal region, likely in Denmark, showing terrain contours, roads, and buildings. A path is highlighted in orange, starting from the bottom center and moving northwards, crossing a large body of water (the sea) in the lower-left quadrant. The map includes labels for various locations such as 'Tisel', 'Ravnholt', and 'Ravnholthede'. The sea is labeled 'OLBJERG' in the bottom left corner.

Ingen bane over søen







08 - Solbjerg Sø set fra syd



Eksisterende forhold

Øversigt over visualiseringer, ver 1.0 31. okt. 2016





Visualisering af løsning





Hørning

Tranbjerg

Bjertrup

Overballe

Nederballe

Tranbjerg Haveby

Ingerslev

Obstrup

Tingskoven

Segårde

Blegind

Ravnholt

Testrup

Mårslet

Stilling

Gram

Viby

Tise

Mustrup

Solbjerg

Fastrup

Fastrup Mark

Astrup

Fruering

Virring

Ask

Askkrog

Tulstrup

Ballen

Bøgeskov

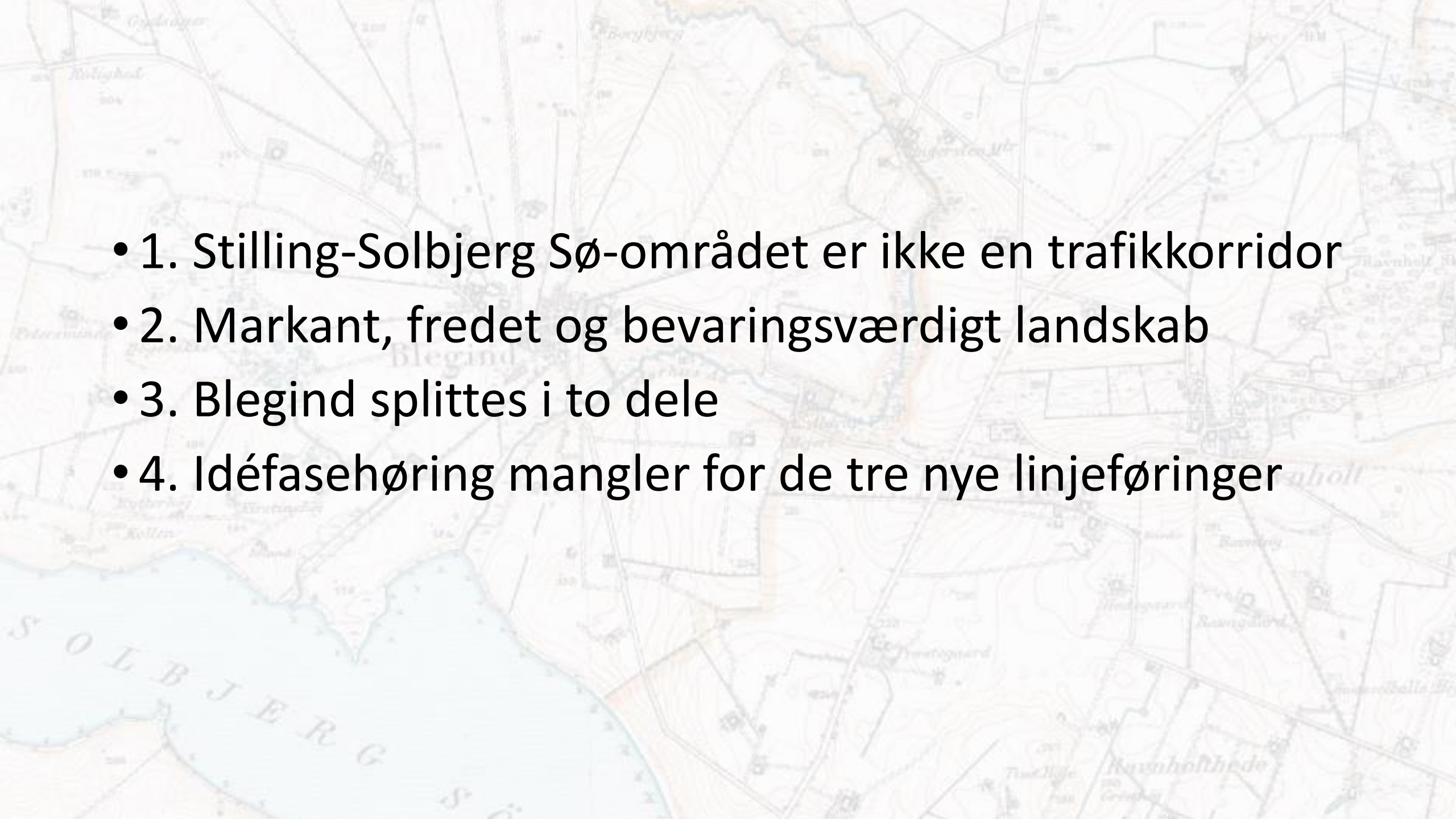










- 
- 1. Stilling-Solbjerg Sø-området er ikke en trafikkorridor
  - 2. Markant, fredet og bevaringsværdigt landskab
  - 3. Blegind splittes i to dele
  - 4. Idéfasehøring mangler for de tre nye linjeføringer