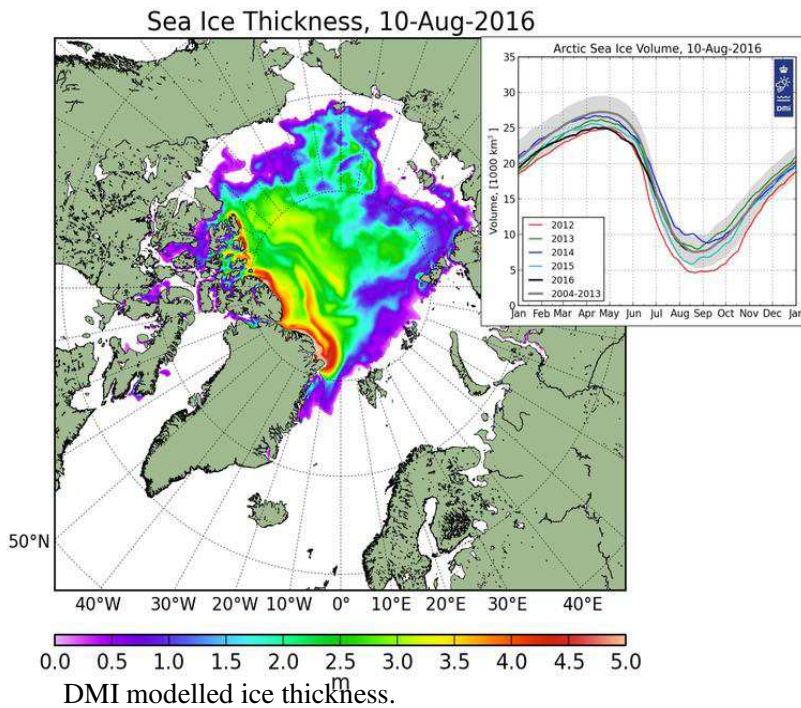


Orientering:

Den arktiske havs skrumper ikke, men øges:

Den årtidsbestemte afsmeltning ophørte tidligere end forventet, allerede August 2016

Kortet 10-August-2016 viser, at mængden af flerårig is (2-5 år) massivt er øget og at det arktiske bassin er fyldt op med flerårig tyk is.



Nedenfor illustreres NASA's fejlagtige vurdering af isdækkets tilstand idet den årtids bestemte afsmeltning lægges til grund for en total fremtidig nedsmeltning af Actis. Klima politik når det er værst:

First half of 2016 breaks heat records, Arctic sea ice reaches lowest levels: NASA

By Levon Sevunts, Radio Canada International | english@rcinet.ca Friday 22 July, 2016 , No Comments ↓

Ice free Arctic?

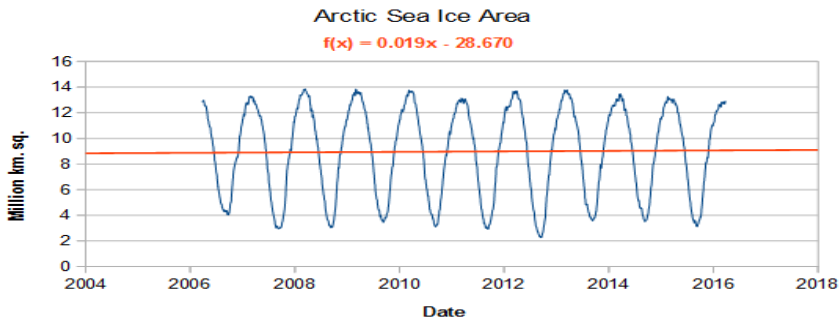
What's more, the Arctic is rapidly losing its thick multiyear ice cover.

"Basically, we're becoming an Arctic with a seasonal ice cover, thinner ice cover and a younger ice cover," Meier said.

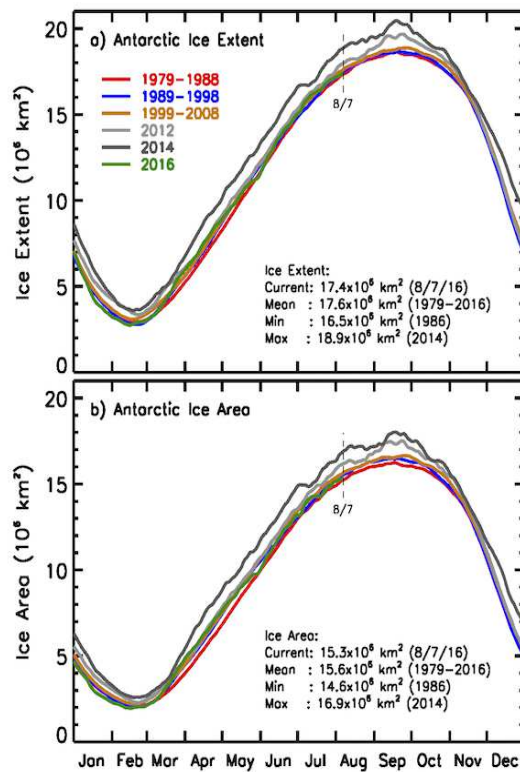
Scientists are seeing the ice loss trend accelerating, particularly in September, when the Arctic reaches its ice extent seasonal minimum, he said. **Den årtids bestemte afsmeltning ophørte allerede i August**

"It's melting more rapidly, it's melting earlier in the summer time, so there is more time to melt," Meier said. "And so as we progress along, as things continue to warm, temperatures continue to rise over the years, the model projections all suggest that we will reach a point of essentially no ice."

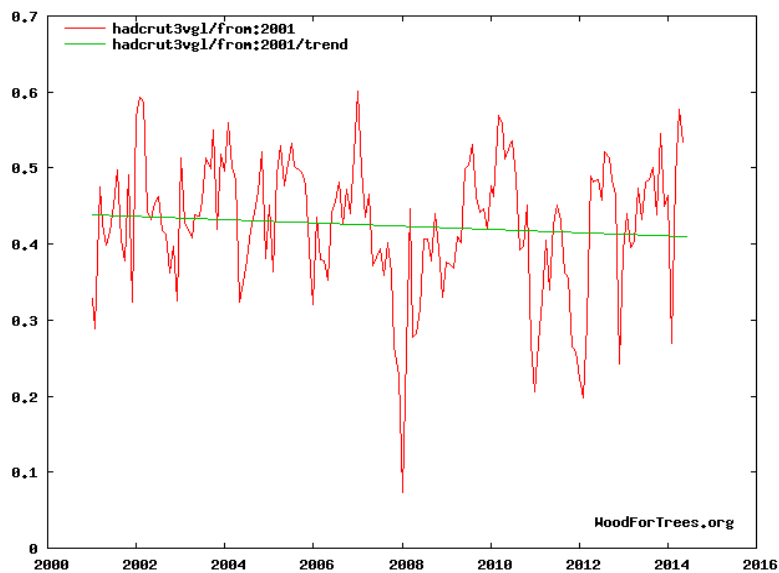
Det arktiske havis areal er øget i de sidste 10 år



NCAR- The National Center for Atmospheric Research:
 ”Havisen i Antaktis er har været stigende siden år 2000”--- helt i overensstemmelse med indledningen til solcyklus 23’s Grand Minima 2001, hvor der indtrådte et standstill i jordens overflade temperatur. (Sidste sætning, min fortolkning: Solen er årsagen)



Selv Hadcrut (IPCC) viser en kuld trend i jordens overflade temperatur startende i år 2000:



Vagn Hofman
vagnhofman@mail.tele.dk