

Toxoplasma Gondii

Forelæggelse på Christiansborg 6/11-2014

Bo Hembæk Svensson

Problemformulering

- A. TG er **livsfarlig** for mennesker (og dyr)
- B. TG er (medvirkende) årsag til mange "store" og omkostningstunge psykiske- og fysiske sygdomme - f.eks Skizofreni, Alzheimers og Diabetes
- C. TG påvirker hele samfundstænkningen og er involveret i dannelse af memner
- D. TG er biologisk set one-of-a-kind og betegnes som "meget intelligent". TG's conoid er instrumental og en unik konstruktion
- E. TG kan fjernes fra mennesker og dyr med forskellige, enkle og billige metoder og kan forebygges
- F. Information om TG gør os frygtsomme og TG modsætter sig altid opdagelse - en inficeret person vil derfor være hæmmet intellektuelt i tilnærmelsen til TG fænomenet
- G. P.t er ca. 1,5 million danskere inficerede af TG

Inflammatorisk- og psykisk påvirkning

- A. Ved indtrængen i kroppen skaber TG betingelser for en række autoimmune og inflammatoriske sygdomme, som f.eks diabetes
 - a. Immunforsvaret reagerer på TG når man er i infektions-fasen
 - b. TG sætter sig herefter i muskelvæv og hjernevæv
- B. TG trænger dybt og præcist ind i hjernen og påvirker syntesen af bla. Dopamin og Testosteron
- C. Effekten af påvirkningen af hjernen og de inflammatoriske tilstande kan medfører Skizofreni, Depression, OCD, Parkinsons, Alzheimers og en lang række andre alvorlige sygdomme
- D. TG udøver (subtil) psykisk/psykologisk indflydelse på *alle* inficerede, og akkumuleret påvirker det tænkning, rationalitet og dannelse af memmer i hele samfund. TG påvirker derfor hele samfundet

Hvilken dokumentation foreligger ?

Samlet set godt 7.000 artikler, papers mv.

- A. Forskningspapirer fra medicinere, læger, parasitologer, neurologer mv.
- B. Videnskabsartikler, op-ed's, analyser og publiceringer fra hele verden
- C. Myndighedsadvarsler fra f.eks FN og Center for Disease Control (CDC)
- D. Forskning fra scholars, PhD'er og Professorer fra ikke medicinske, videnskabsfelter (f.eks kvantemekanik, historie mv.)
- E. Rigt og meget omfattende baggrundsmateriale i form af bøger, Youtube lektioner, papers, præsentationer og andet.

Det meste af den *betydningsfulde* og *aggregerende* forskning i TG er mindre end 5 år gammel - og det er forklaringen på at vi først nu kan sammenstille tilstrækkeligt med fakta til at skabe et sammenhængende billede

Islands Statsminister advarer 15/8

“PM Fears **Behavior-Changing Microbe** in Imported Meat”

<http://icelandreview.com/news/2014/08/15/pm-fears-behavior-changing-microbe-imported-meat>

“ ...it can lead to changes in behavioral patterns, and people have even wondered if this could be changing the **behavior of whole nations.**”

Hr. Gunnlaugsson udtrykker her det samme som moderne forskning er nået frem til igennem de senere år - og har tydeligvis sat sin ind i denne forskning.

Hans ord kan ikke stå uimodsagt - og enhver ansvarlig politiker, myndighedsperson og borger må stille spørgsmål hertil - for hvis det er sandt hvad Statsministeren siger har vi et betydeligt problem at løse.

Gunnlaugsson,s advarsler er konsistente med en lang række publiceringer, artikler mv.

"Unbalanced levels of dopamine are associated with **Schizophrenia** and lowered serotonin levels have been associated with **depression** and **aggression**. These mechanisms are thought to be possible causes to the **behavioural changes** that have been shown in studies of infected humans.

Several studies show an association between Schizophrenia and T. gondii-seropositivity. An association between seropositivity and **suicide**, **self-directed violence**, **changes in personality** and reaction time has also been indicated. The latter is thought to be a contributing factor in the studies showing a **higher risk of traffic accidents** in infected people. **An association between behavioural changes and anti-T. gondii-IgG levels, i.e. the chronic form of toxoplasmosis, has been shown in several studies"** (SLU, Sweden, August 2014)

An unassuming single-celled organism called Toxoplasma gondii is **one of the most successful parasites on Earth**, infecting an estimated 11 percent of Americans and perhaps half of all people worldwide.

One reason for Toxoplasma's success is its ability to manipulate its hosts. The parasite can influence their behavior, **so much so that hosts can put themselves at risk of death.** (August 2014, New York Times : Parasites Practicing Mind Control)

Brain parasite directly alters brain chemistry

www.sciencedaily.com/releases/2011/11/111104102125.htm

“A research group from the University of Leeds has shown that infection by the brain parasite *Toxoplasma gondii*, found in 10-20 percent of the UK’s population, **directly affects the production of dopamine, a key chemical messenger in the brain.**”

<http://www.dailypaul.com/279961/scientists-claim-40-of-population-is-infected-with-mind-control-parasite>

Joanne Webster, professor of parasite epidemiology at Imperial College London, explains that many parasites favor the brain, “because it shelters them from the full fury of the immune system”. **But, she says, “it also gives them direct access to the machinery to alter the host, s behavior”.**

Protozoa Could Be Controlling Your Brain

www.scientificamerican.com/article/fatal-attraction/

“Natural selection has given rise to pathogens that infiltrate the nervous system and change that system’s wiring to achieve its ultimate purpose, replication—**like a computer virus that reprograms an infected machine.**”

Toxoplasma uses ‘Trojan horse’ to infect human brain and may cause suicidal thoughts and risk-taking

www.scientificamerican.com/article/fatal-attraction/

“For *toxoplasma* to make cells in the immune defence to secrete GABA was as surprising as it was unexpected... This was unknown before. It **means that the parasite had the capacity potentially to manipulate the central nervous system,**” Dr Barragan said.

Nyeste fra 30/10 - 2014: Skizofreni og TG

Nyeste peer-reviewed rapport fra forskergruppe hos University of Pennsylvania, 30/10-14:

“Op mod 20% af alle tilfælde af Skizofreni kan skyldes infektion med TG”

“Instead of ridiculing the idea of a connection between *T. gondii* and schizophrenia because it seems so extraordinary, we can sit down and consider the evidence. Perhaps then we might be persuaded to look for more ways to reduce the number of people infected with Toxoplasma.”

Op mod 40 videnskabelige studier forbinder TG og Skizofreni.

United Nations advayer 15/7

“Food-borne parasites of **greatest global concern**” <http://foodnewsinternational.com/2014/07/16/europe-fao-names-top-10-food-borne-parasites-develops-guidelines-to-control-them/>

“Despite their **huge social costs** and global impacts, information is generally lacking regarding just where these parasites come from, how they live in the human body, and – most importantly – how they make people sick.”

“But considering the problems they cause, **these parasites do not get the attention they deserve**. We hope that by releasing a top 10 ranking we can **increase awareness among policy makers**, the media and the general public about this **major public health issue**.”

CDC/USA advarer 8/5

Parasitic infections have just been labeled **priorities for public health action** by U.

S. health officials. <http://health.usnews.com/health-news/articles/2014/05/08/cdc-targets-5-parasitic-infections>

"Parasitic infections affect millions around the world causing seizures, blindness, infertility, heart failure, and even death"

"While parasitic infections can sometimes affect millions of people, they often cause few symptoms and go unnoticed"

"More than 60 million people (in US) are chronically infected with *Toxoplasma gondii*"

"The CDC experts noted that **most parasitic infections can be prevented and many are treatable**. But they most often go undiagnosed and untreated because people don't know they are at risk or infected, and many doctors, unfamiliar with these infections, fail to diagnose or treat them properly"

International forskerteam 19/8 d.å advarer om : “..devastating diseases this parasite causes”

What Does It Mean When 2 Billion People Share Their Brain With A Parasite?

<http://sciencelife.uchospitals.edu/2014/07/22/what-does-it-mean-when-2-billion-people-share-their-brain-with-a-parasite/>

Several research teams have looked for effects on personality or behavior in humans. **These groups have found that patients with schizophrenia or obsessive-compulsive disorder are statistically more likely to have a *T. gondii* infection.** Infected men have slower reaction times, and more than twice as many traffic accidents. There also are associations of having antibodies to the parasite with bipolar disease, suicidal behavior, even an optimistic disposition, possibly related to the parasite's effects on dopamine. A 2012 analysis from France, where an estimated 43 percent of people carry *T. gondii*, concluded that men with a latent infection tend to be “more dogmatic, less confident, more jealous, less impulsive and more orderly than uninfected men. Infected women seemed warmer, more conscientious, more persistent, more insecure and more sanctimonious.”

“We realized that many of these pathways were also in play in various neurodegenerative diseases, such as **Alzheimer's and even schizophrenia. Some may contribute to atherosclerosis or diabetes.** When this powerful immune response remains on the job it can have effects that might be harmful.”

“More effective medicines or a vaccine could protect against the devastating diseases this parasite causes.”

“Global Threat” af 9/3 d.å

“Toxoplasmosis – *A Global Threat*. Correlation of Latent Toxoplasmosis with Specific Disease Burden in a Set of 88 Countries.” <http://www.plosone.org/article/info:doi/10.1371/journal.pone.0090203>

“Toxoplasmosis is becoming a global health hazard as it infects 30–50% of the world human population. Clinically, the life-long presence of the parasite in tissues of a majority of infected individuals is usually considered asymptomatic. **However, a number of studies show that this ‘asymptomatic infection’ may also lead to development of other human pathologies.”**

Første gang TG blev udråbt til “Global Threat” var i 2011 i dette peer-reviewed papir: <http://www.ncbi.nlm.nih.gov/pmc/articles/PMC3162817/>

The disease has a higher impact in immunocompromised individuals and in congenital infection **because of the severity of central nervous system involvement. Although simple prophylactic measures could reduce transmission, *T. gondii* seroprevalence is still high**, especially in South America. Educational campaigns and the development of new drugs to prevent primary infection could potentially reduce the burden of the disease.

Klar advarsel fra Journal of Pathogens - 2013

Journal of Pathogens, Oktober 2013
Toxoplasma gondii Host/Pathogen Interactome Enrichment in **Nine Psychiatric or Neurological Disorders**, Oktober 2013, Journal of Pathogens

<http://www.hindawi.com/journals/jpath/2013/965046/>

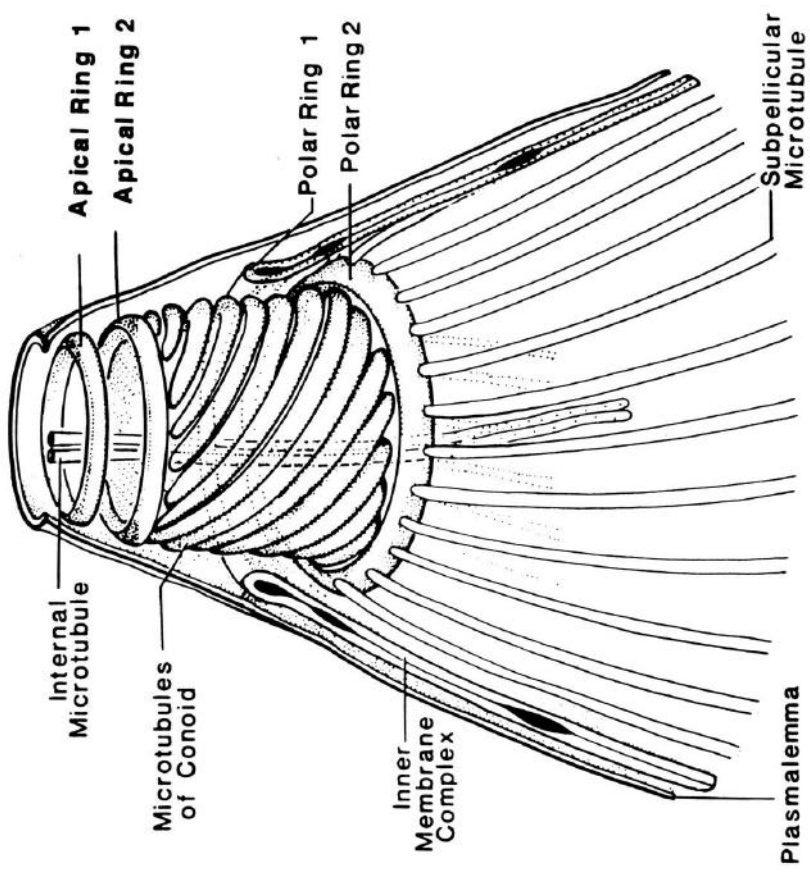
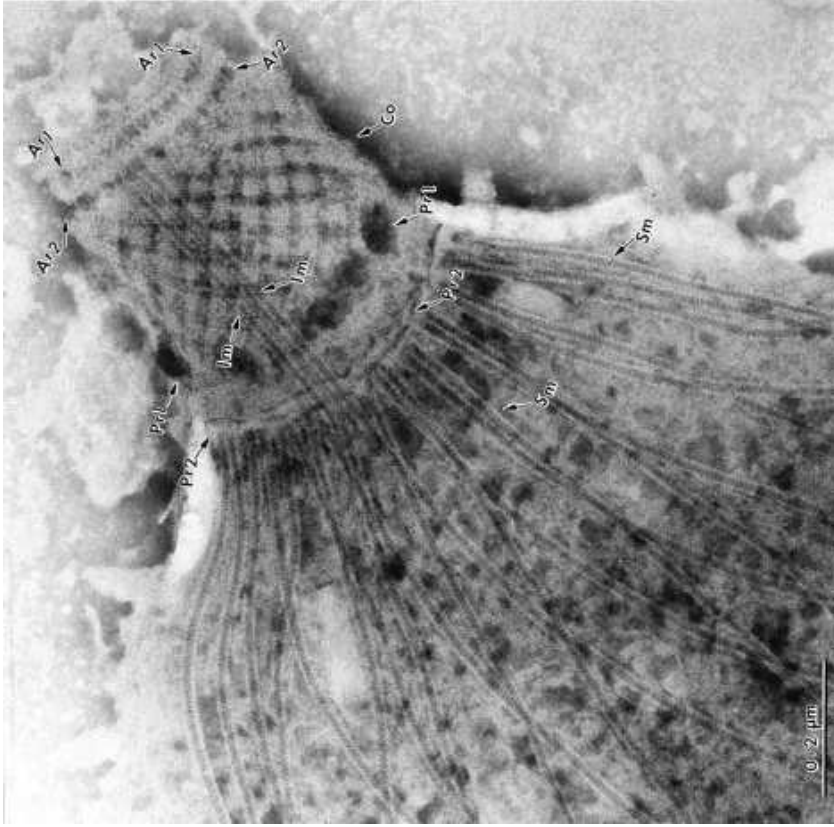
Toxoplasma gondii is not only implicated in schizophrenia and related disorders, but also in Alzheimer's or Parkinson's disease, cancer, cardiac myopathies, and autoimmune disorders. During its life cycle, the pathogen interacts with ~3000 host genes or proteins. Susceptibility genes for multiple sclerosis, Alzheimer's disease, schizophrenia, bipolar disorder, depression, childhood obesity, Parkinson's disease, attention deficit hyperactivity disorder.

Biologi

Toxoplasma Gondii har en helt unik biologi og beskrives af Professor Sapolsky fra Stanford som “...*mere intelligent end tusind videnskabsmænd*”

Andre der har studeret den kalder TG for “mysterious”, “enigmatic”, “novel” og så videre.

TG’s “conoid” er one-of-a-kind - og en nøgle til at forstå fænomenet Toxoplasma.



Dette er TG's "Conoid" - den findes KUN på Toxoplasma Gondii, som derfor er one-of-a-kind. Conoiden placerer TG i et helt nyt felt og rummer betydelig evidens for sammenhængende kontekst.



Fascinerende 25 minutters interview med Professor R. Sapolsky fra Stanford
om TG.



12 minutters overblik over den grundlæggende biologi og cyklus

Konklusion

1. Hypotesen er sandsynliggjort i den fremlagte videnskab, og der er mange **uafhængige** kilder der peger på det samme
2. Folketinget har **pligt** til at undersøge og afklare
3. Der bør derfor omgående **rejse spørgsmål** til Ministeren for Sundhed, Ministeren for Fødevarer og Statsministeren - idet:
 - 3.1. TG gør danskere **syge** og er derfor et anliggende for Sundhedsministeriet og dets institutioner
 - 3.2. TG **overføres** ofte via fødevarer og er derfor et anliggende for Fødevareministeriet
 - 3.3. TG vurderes at **påvirke** hele samfundstænkningen og er derfor en anliggende for Statsministeriet

Supplerende data

1. Der er evidens for at det er en fejlantagelse af TG fordrer katten som vært - nyere data synes at modbevise dette
2. TG synes at sprede sig hurtigt blandt dyr. Senest er en del Beluga hvaler samt oddere i Californien blevet ramt af dødelig Toxoplasmose

Fra internettets dybere lag:

1. TG is a global challenge and affects both society and individuals.
2. TG is involved - one way or the other - in most chronic diseases, physical and psychic. TG exhausts the immune-system and "hijacks" the Amygdala and other important parts of the brain.
3. TG infection-rate is app. 25-30% on average for humanity as a whole.
4. The risk of infection adds over time, i.e the older you are, the higher the risk.
5. People infected by TG are **always** affected - following a bell curve, as to how seriously it manifests in the individual.
6. TG infection is higher among people in executive positions/people dealing with decision making and more women than men get infected.
7. There are many - simple - ways to cure an individual.
8. Unfortunately TG has spread to several animal species.
9. There MIGHT be a (global) solution, and it might be based on frequency.
10. There is a strong correlation (and perhaps causation) between TG and the concept of archons.
11. TG is the cause of Wetiko

Hvem er informerede

Vi har siden februar i år løbende informeret følgende:

- Statsministeriet, Sundhedsministeriet, Fødevareministeriet, Justitsministeriet, Finansministeriet, Statens Serum Institut, Sundhedsstyrelsen, Fødevarestyrelsen, Sundhedsudvalget, Fødevareudvalget, PET mfl.
- Novo Nordisk, Eli Lilly, Lundbeck, LEO, Novofonden, Lundbeckfonden, IBM, Kroman-Reumert, Plesner mfl
- Alzheimerforeningen, Parkinsonforeningen, Skizofreniforeningen, Diabetesforeningen, Kræftens bekæmpelse, Lægeforeningen mfl.
- Samtlige store medier i Danmark samt en række videnskabsjournalister
- En række udenlandske aktører