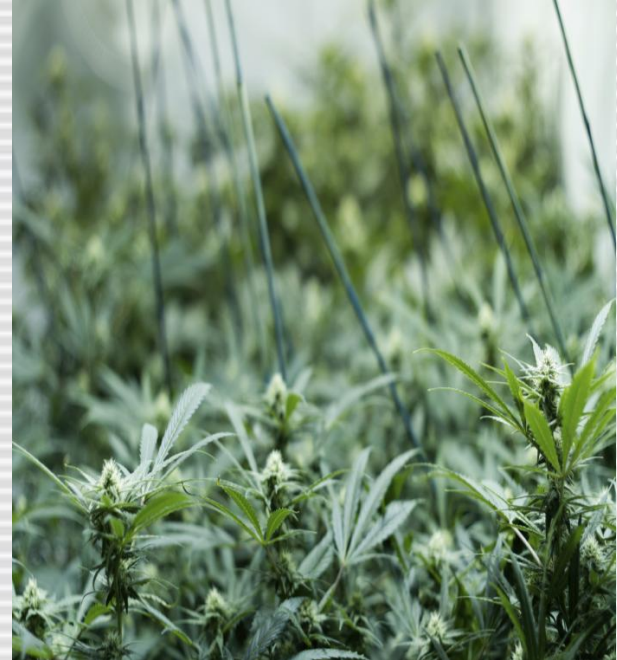


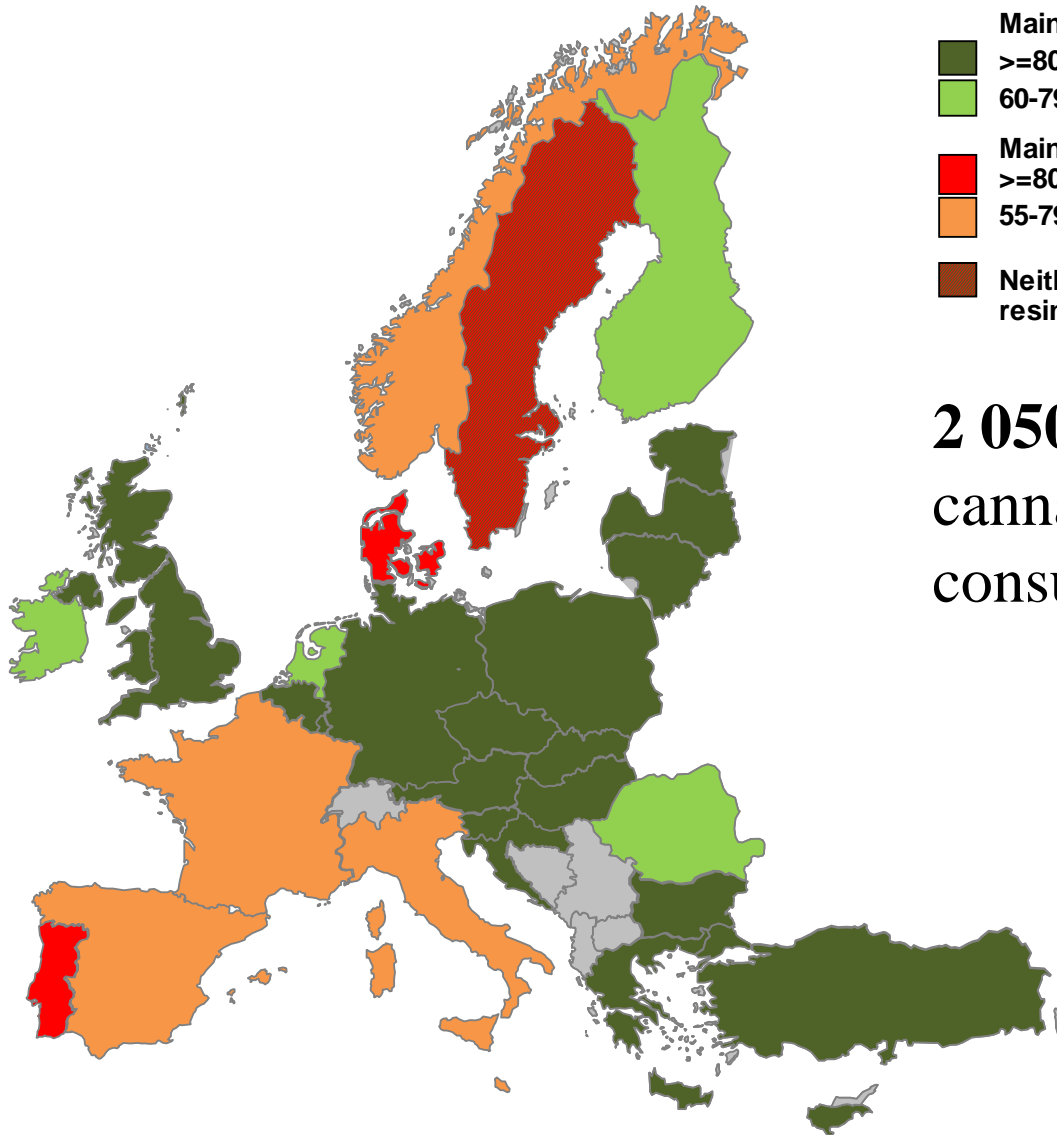
Cannabis in the EU

A persistent and resilient market



Characteristics, uses and consequences

Shares of cannabis products consumed in Europe:



- Mainly cannabis herb
 - $\geq 80\%$
 - 60-79%
- Mainly cannabis resin
 - $\geq 80\%$
 - 55-79%
- Neither prevailing resin nor herb (50/50)

2 050 tonnes the total quantity of cannabis estimated to be consumed in Europe

5–25 EUR/g - street price
3–14 % THC average
46 % THC (MAX)

European production of Cannabis

POD

Domestic production up

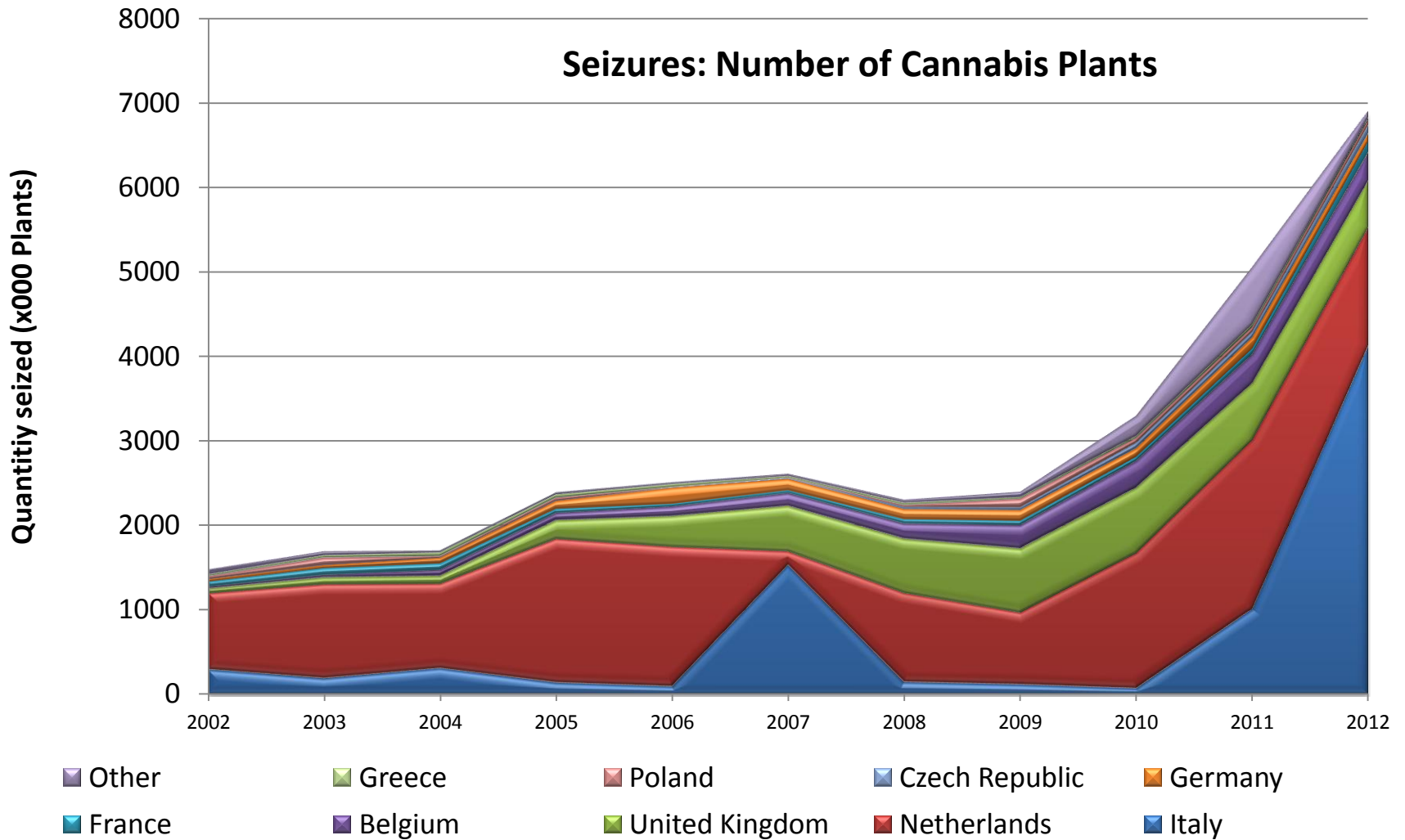
Innovation

Cultivation of
plants high in THC

Potency increases for
herb and recently resin

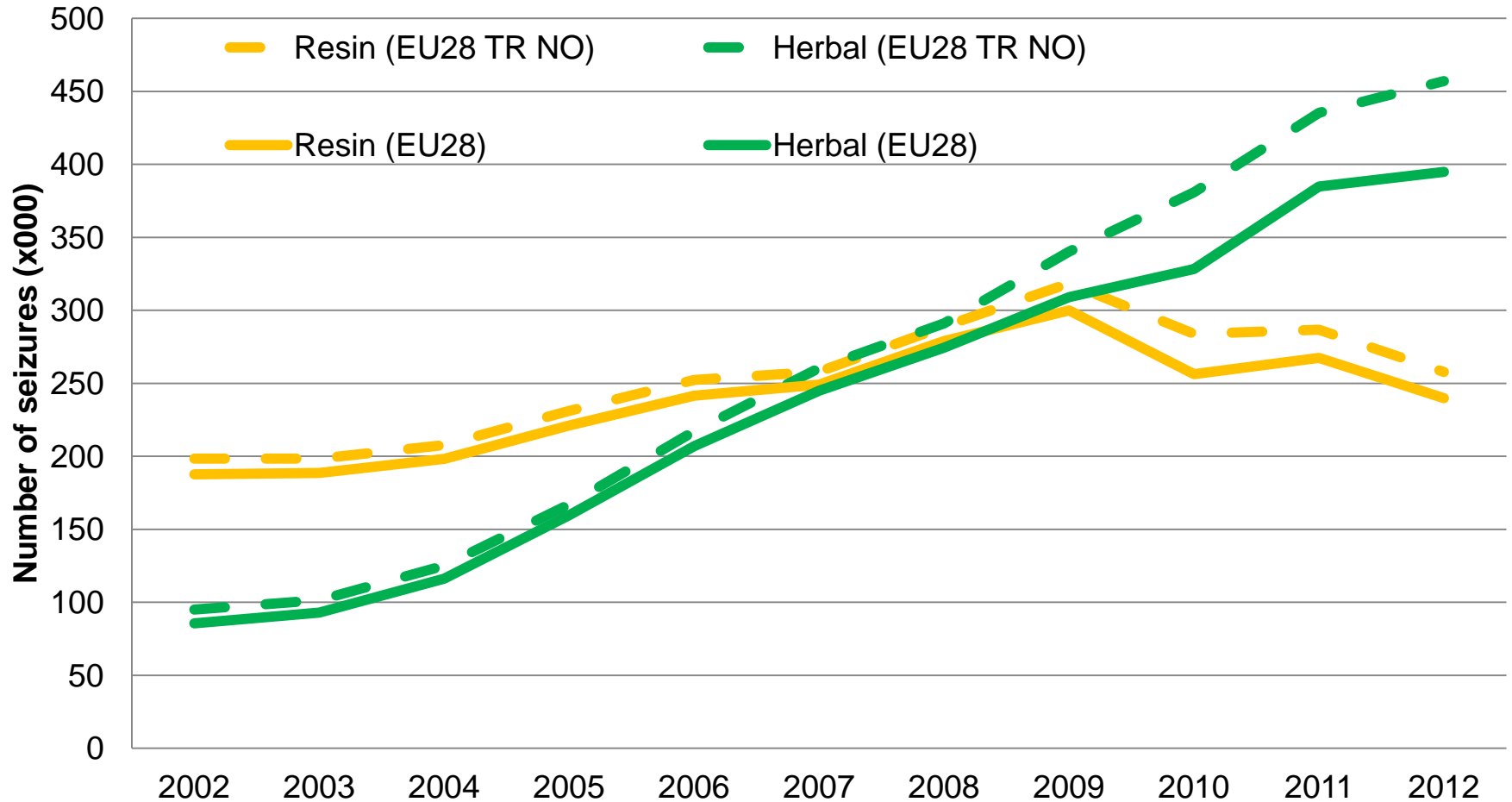


European Cannabis production



Cannabis seizures:

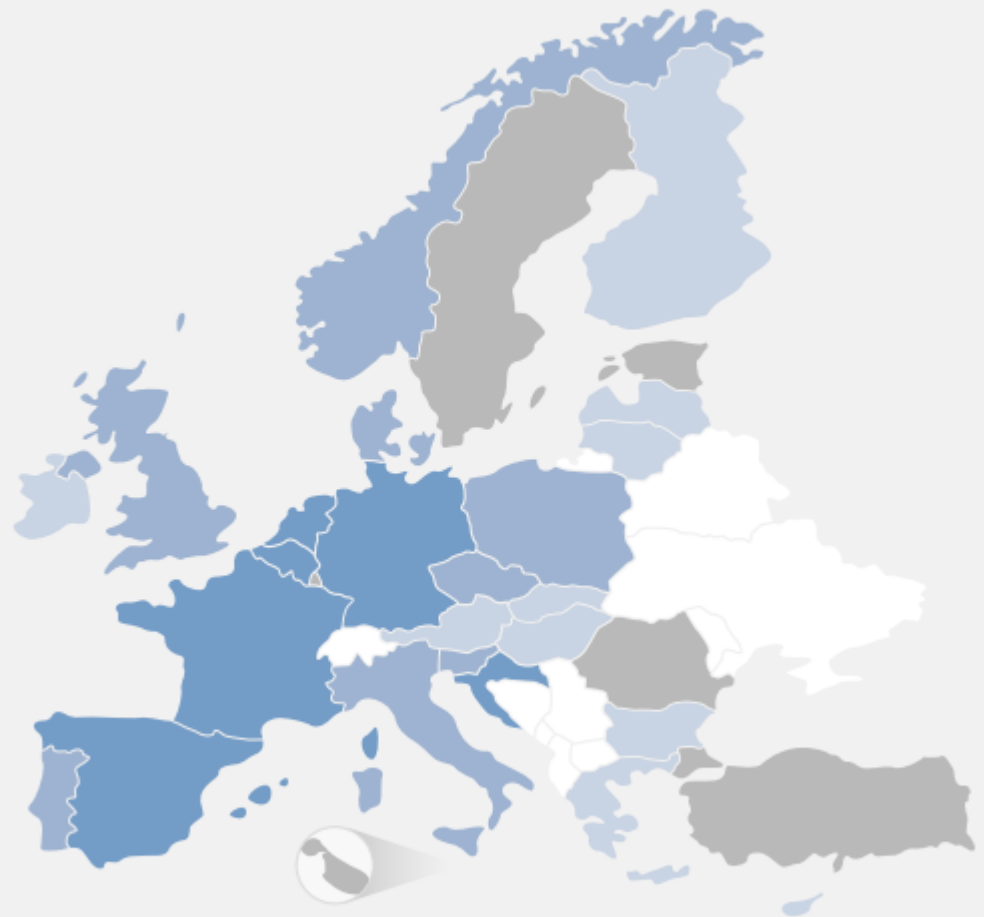
Predominance of cannabis type, resin or herb, in number of seizures



Daily Use

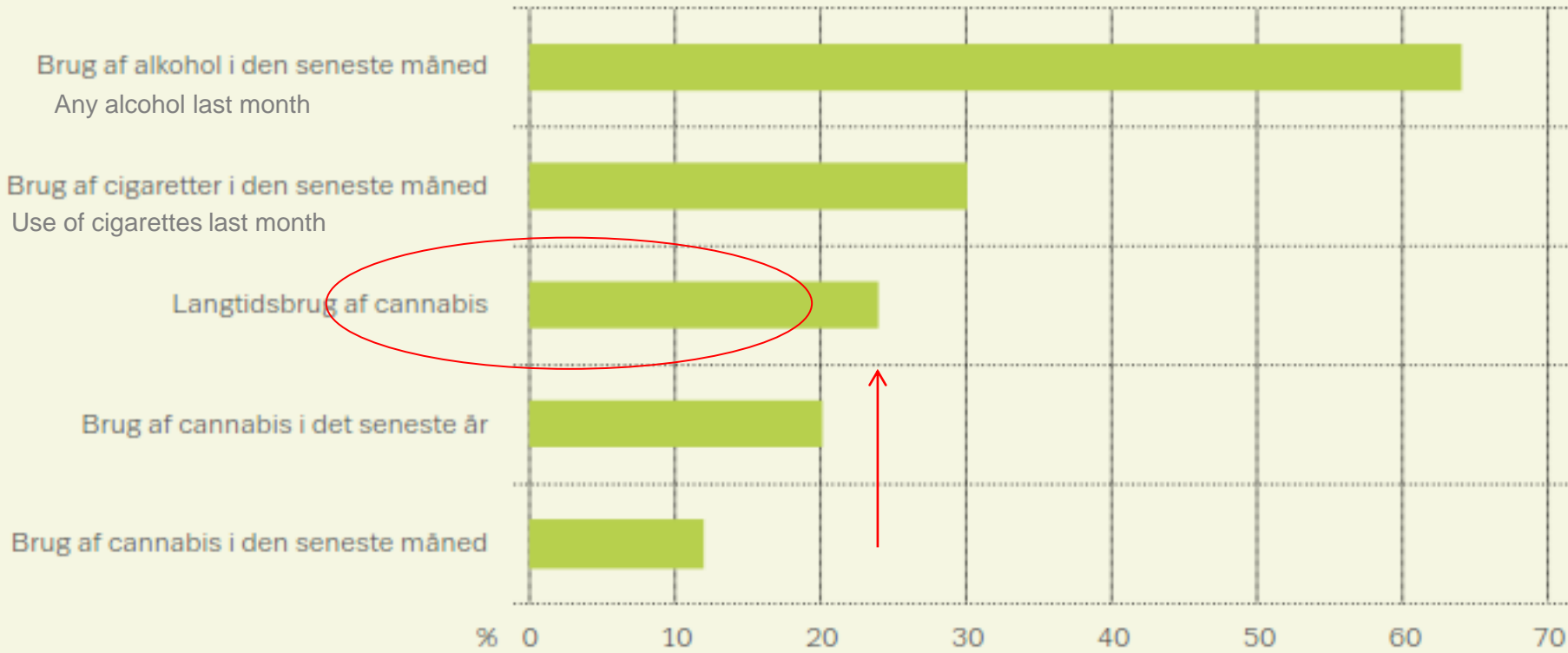
1% young adults
(15-34) use daily
(> 20d./month)

Prævalens af daglig og næsten daglig cannabisbrug blandt unge
(15-34 år)



Procent ■ <0,50 ■ 0,51-1,0 ■ >1,0 ■ Ingen data

Substance use among 15-16 years old in Europe



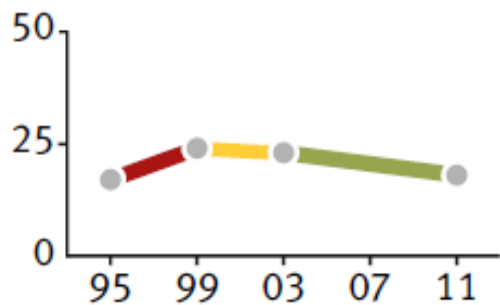
In 2011 one in four used an illicit drugs. Cannabis 24% ever; 20% year; 12% month

Majority 'once or twice' – 2% used 10 times in the month prior to the survey

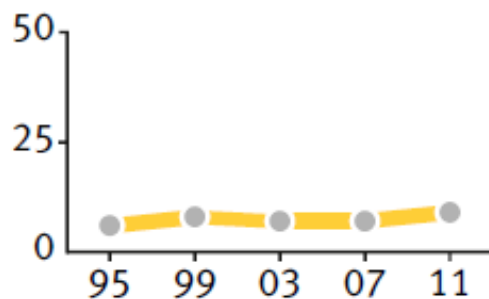


Lifetime use of cannabis in school students 15-16y old

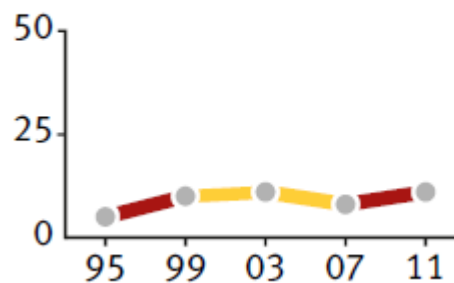
Denmark



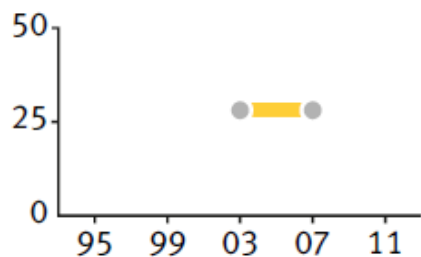
Sweden



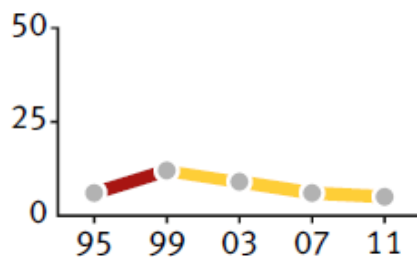
Finland



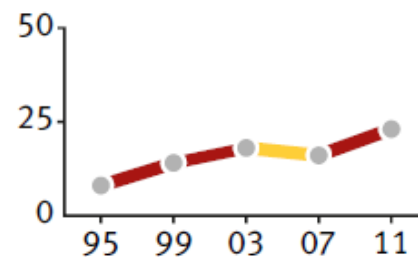
Netherlands



Norway



Poland

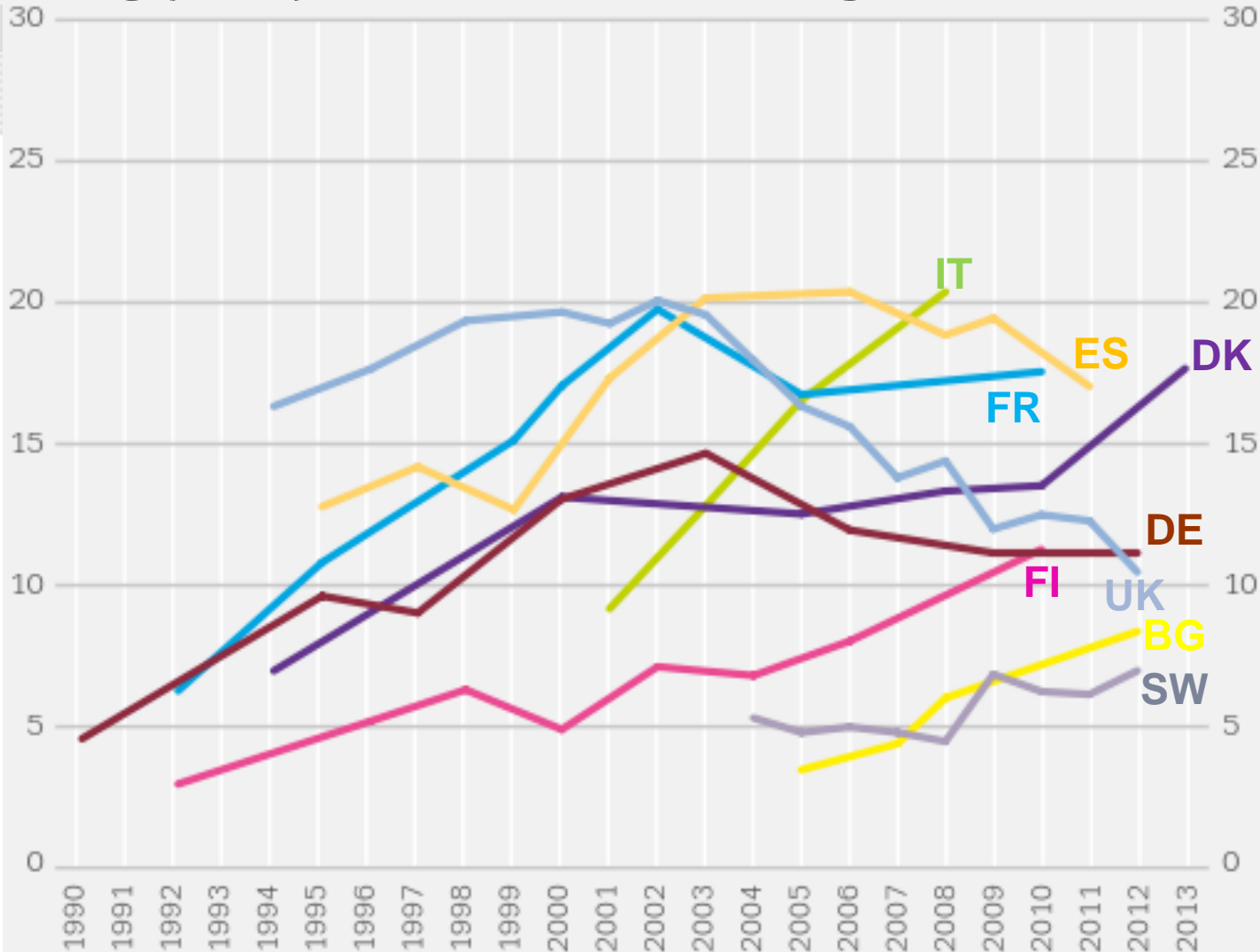


Prævalens af cannabisbrug blandt unge (15-34 år) i det seneste år: lande med statistisk signifikante tendenser

Upward trends in DK, FI, IT, SW

UK, ES downwards trend

FR, DE, Stable trends



Cannabis-related health consequences

Cannabis-related emergencies — a growing problem in high-prevalence countries



Synthetic cannabinoids — new dimension

Use limited, but can be highly potent



Cannabis-related legal consequences

- 1.2m drug offences were reported in EU in 2012, of which about 80% involved cannabis

	Total	Cannabis	Other
Possession	993,000	775,000 (78%)	219,000 (22%)
Supply	241,000	142,000 (59%)	99,000 (41%)
Total	1,235,000	917,000 (74%)	318,000 (26%)

- 18.5% of sentenced prisoners in EU were sentenced for drug offence
- Cannabis also dominates EU seizures (80%)

Cannabis in Europe

Persistent and resilient

- Consolidated position in the market illicit drugs
- Widely available to and affordable to consumers
- Variety in potency (health concerns)
- Large economic assets (2M.kg/year)
- Controversies and contradictions
(lower risks/low priority for law enforcement
80% of seizures and 80% of police arrests)