



ASFINAG ENFORCEMENT SYSTEM

Christof Mauerek

ASFINAG Maut Service GmbH

Vienna, October 30th, 2012

MLFF System - Enforcement

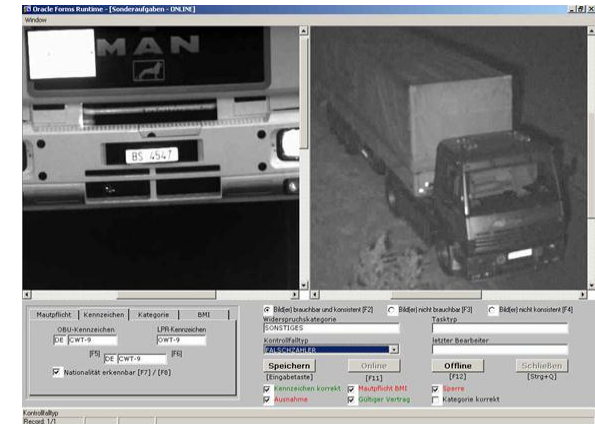
- Key part of the system concept
- Responsible for controlling of correct toll payment:
 - ASFINAG Enforcement Gantries
 - ASFINAG Enforcement Center
 - ASFINAG Toll Enforcement Officers (SKD)



ASFINAG Enforcement System

- **Stationary Enforcement (EC):**
 - 111 Stationary enforcement stations (SKE)
 - Manual Check (Go-Box and toll sticker)
 - handling of special cases and exemptions
 - Consignment of penalties (substitute toll)

- **Mobile Enforcement (SKD):**
 - 43 mobile units (MKE), 110 Officers
 - 34 Portable enforcement stations (PKE)
 - Traffic control areas (VKPL)



Substitute Toll concept

ASFINAG is no public authority, therefore, in case of a **detected toll violation** no fine is imposed but as a legal settlement a substitute toll is offered:

- € 220,- for non-payment of GO-Toll
- € 110,- for false payment of GO-Toll
- € 120,- for no valid toll sticker

If the substitute toll offer is rejected an administrative penalty proceedings is opened.

Enforcement of Vehicles > 3,5 t tax

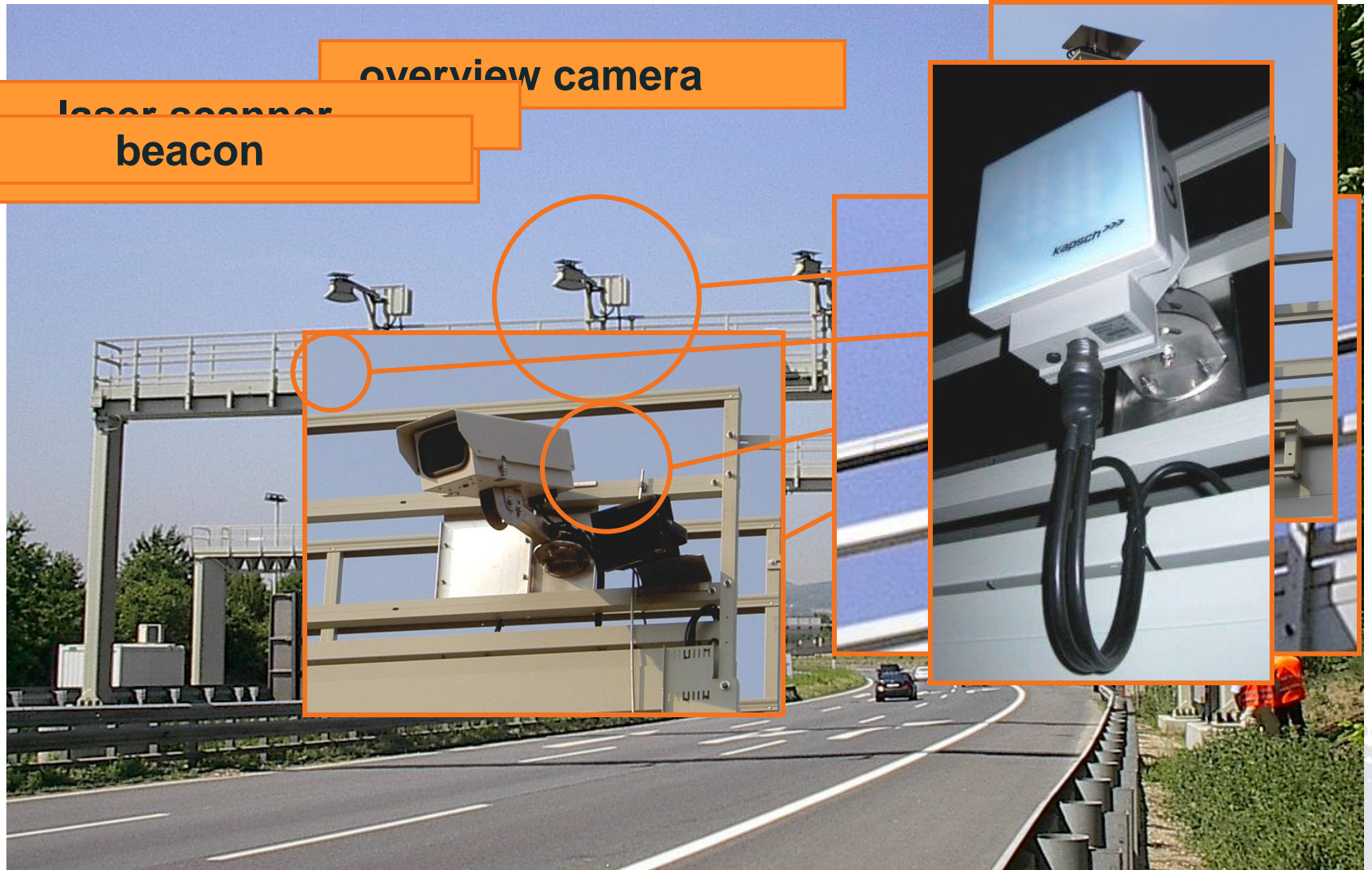


Enforcement RSE

overview camera

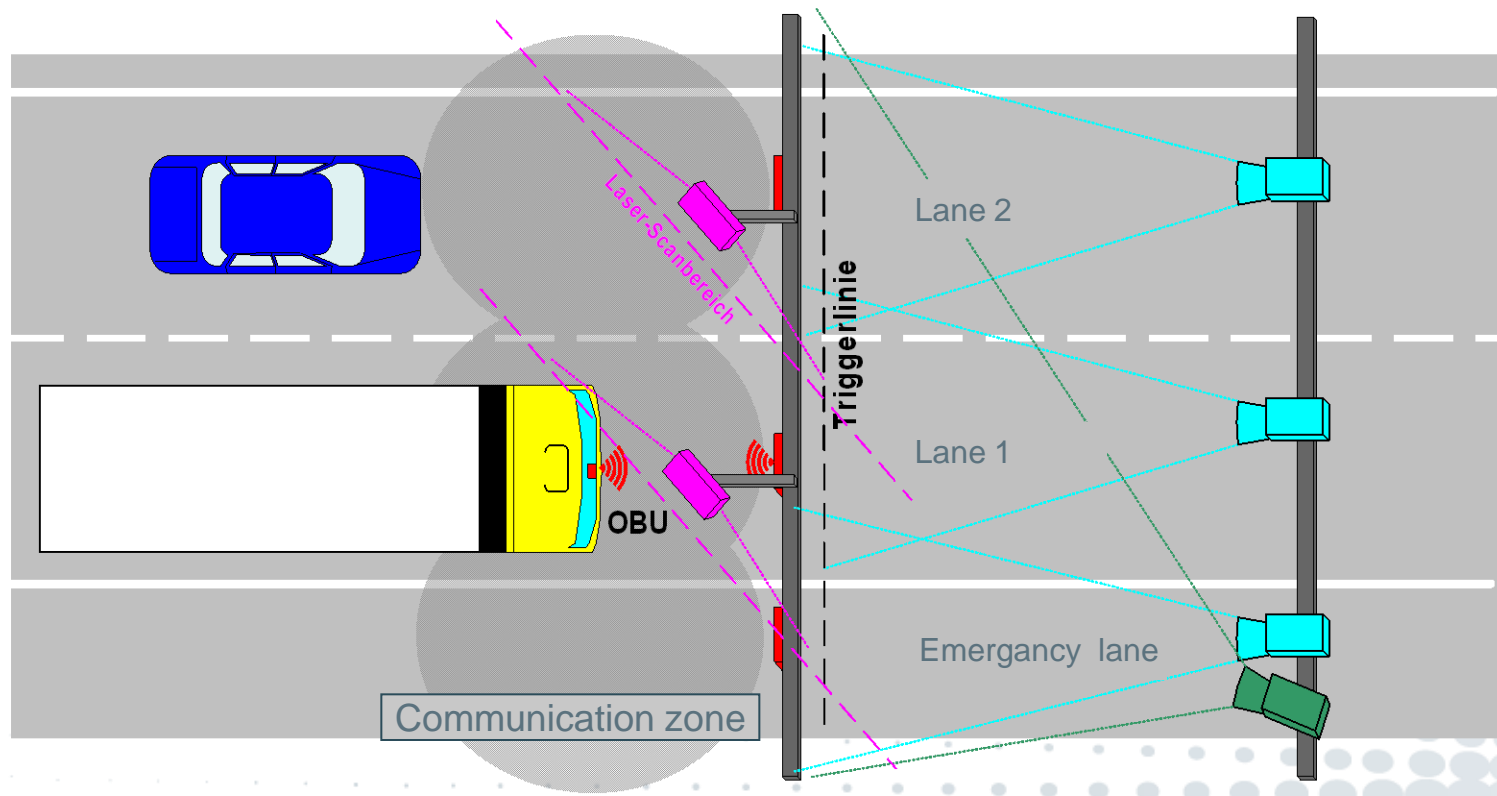
laser scanner

beacon



Enforcement RSE

- Operating mode of RSE



Enforcement Center - Tasks of the manual check



- | Conclusiveness of pictures: licence plate number clearly identifiable
- | Check on toll obligation
- | Comparing declared vehicle category with actual total number of axles
- | Quality assurance by 100% verification
- | Avoiding unjustified enforcement
- | Including permanent exemptions in the exemption list

- Enforcement of Vehicles < 3,5 t law



Enforcement of Toll Stickers in Austria

- Automatic Toll Sticker Control (AVK)
- Mobile enforcement – Toll Enforcement Officers (SKD)
- Executive (police)

Automatic Toll Sticker Control (AVK) (1)

- Portable, automated control of time depending toll for one lane
- Vehicles below 3,5t tax
- Exempt motorcycles
- Detection of mounted toll stickers
- Recording of pictures and license plate data of suspicious cases (no or no valid toll sticker)
- Processing of data in the Enforcement Center
- Currently 8 Systems in operation

Automatic Toll Sticker Control (AVK) (2)

- Installation of the equipment at ascendable Toll gantries
- Relocation follows predefined schedules
- Recording of pictures and license plate data of suspicious cases only
- Automatic prevention of double fining AVK/ Toll Enforcement Officers /Police
- Preference of locations with limited or no possibility for Toll Enforcement Officers to divert moving traffic
- Preference of high traffic locations

Automatic Toll Sticker Control (AVK) Two system generations in Operation:



AVK Siemens (2008)

AVK Eikon
(2010 u. 2012)

2008:
Two units from
Siemens

2010:
Three units from
Eikon

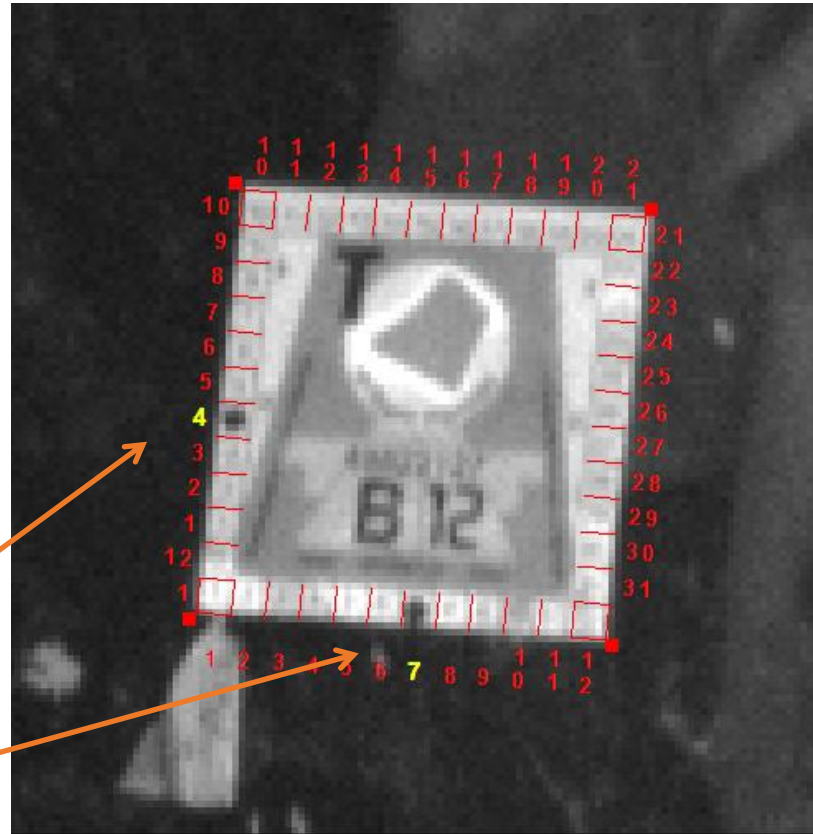
2012:
Another Three
units from Eikon

Overview picture incl. license plate



DATE: 2012-07-20 12:12:02.387889 GPS: lat= 47.752181 lon= 13.013003 LSID: 190 USERID: wja

Detail picture – zoom on toll sticker



Good visibility of punched holes for month and day

Mobile Enforcement: Toll Enforcement Officers



Mobile enforcement - SKD

- **Authorisation to**
 - escort suspect vehicles out of the moving traffic and to stop them
 - collect toll
 - to levy a substitute toll and, if necessary, to prevent the vehicle from continuing on its journey
 - give advice (first aid, information etc..)



RELIABILITY ALL THE WAY.