

## Visitation of the Danish Commission for Education



## **Kinder- und Bildungskommission:**

Herr Orla HAV,  
Kommissionspräsident  
Herr Troels RAVN  
Frau Karin GAARDSTED  
Frau Lotte ROD, Vizepräsidentin  
Herr Peter Juel JENSEN  
Frau Karen Kloch ELLEMANN  
Herr Alex AHRENDTSEN  
Frau Marie Krarup MØLLER  
Frau Rosa Torp LUND  
Frau Merete RIISAGER  
Herr Jørgen NIELSEN,  
Kommissionssekretär

## **Bildungs- ministerium:**

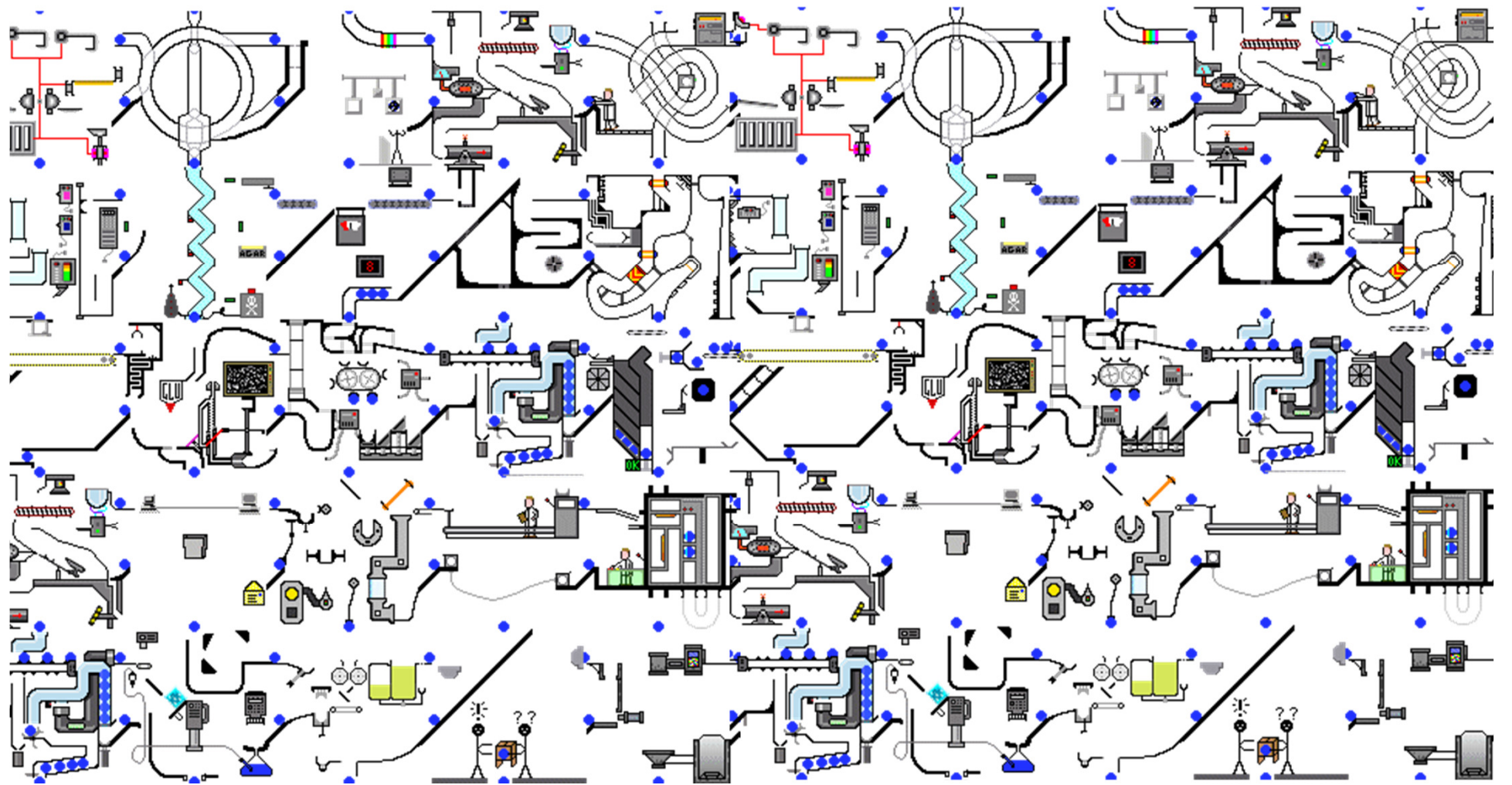
Frau Christina ANTORINI,  
Ministerin  
Herr Jesper FISKER,  
Staatssekretär  
Herr Lars MORTENSEN,  
Abteilungsleiter  
Frau Trine FREDERIKSEN,  
Ministersekretärin



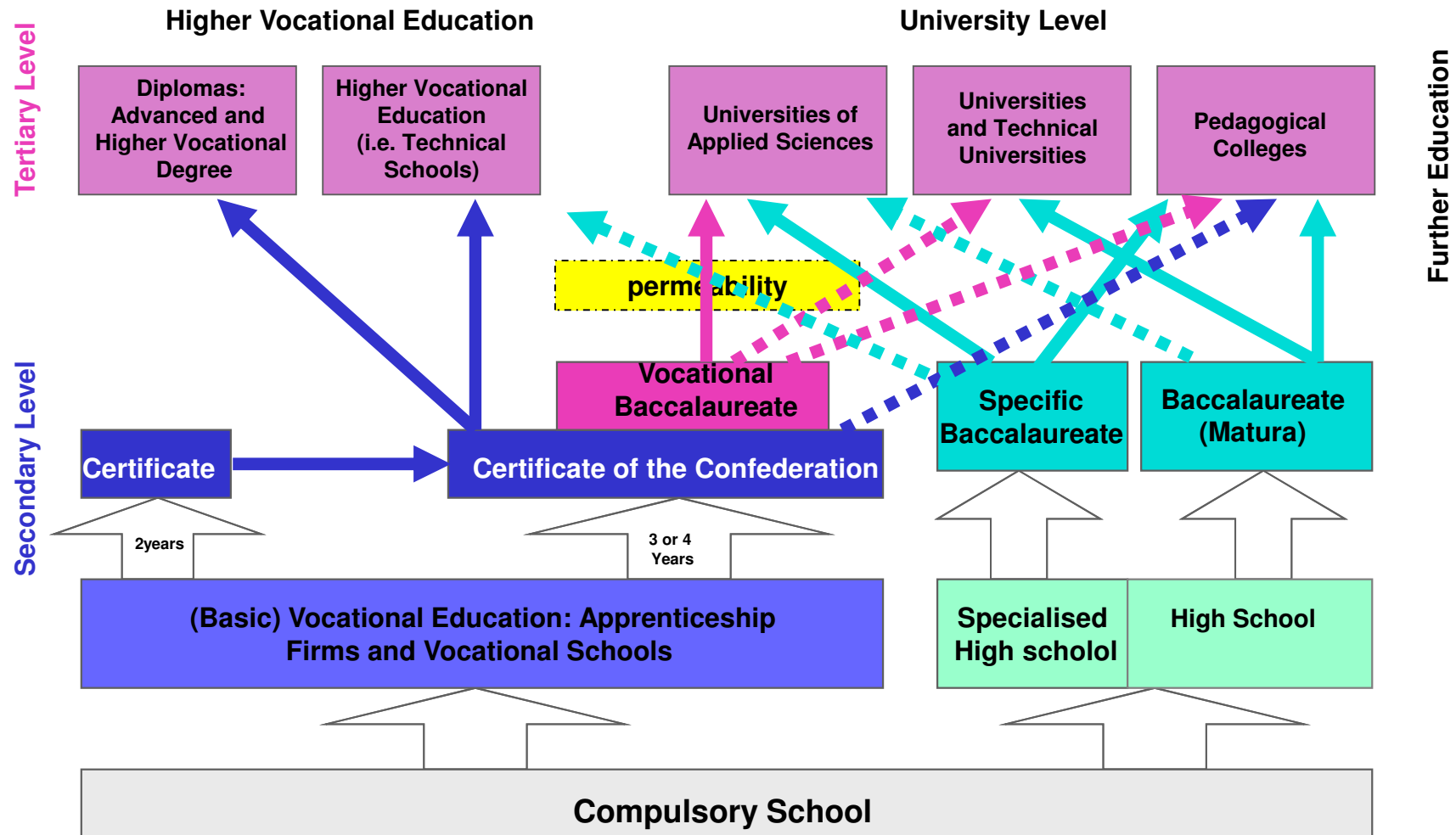
## **Organisation of the Swiss Educational System**



# gibb

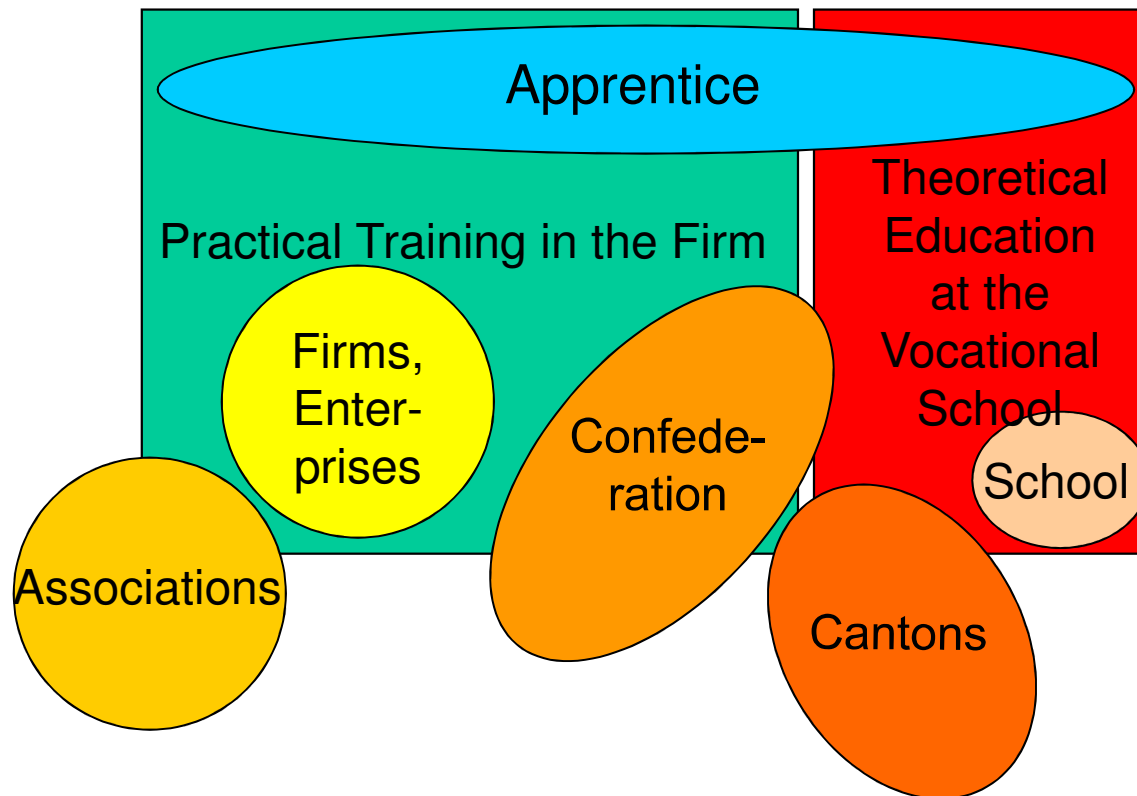


# Organisation of the Swiss Educational System



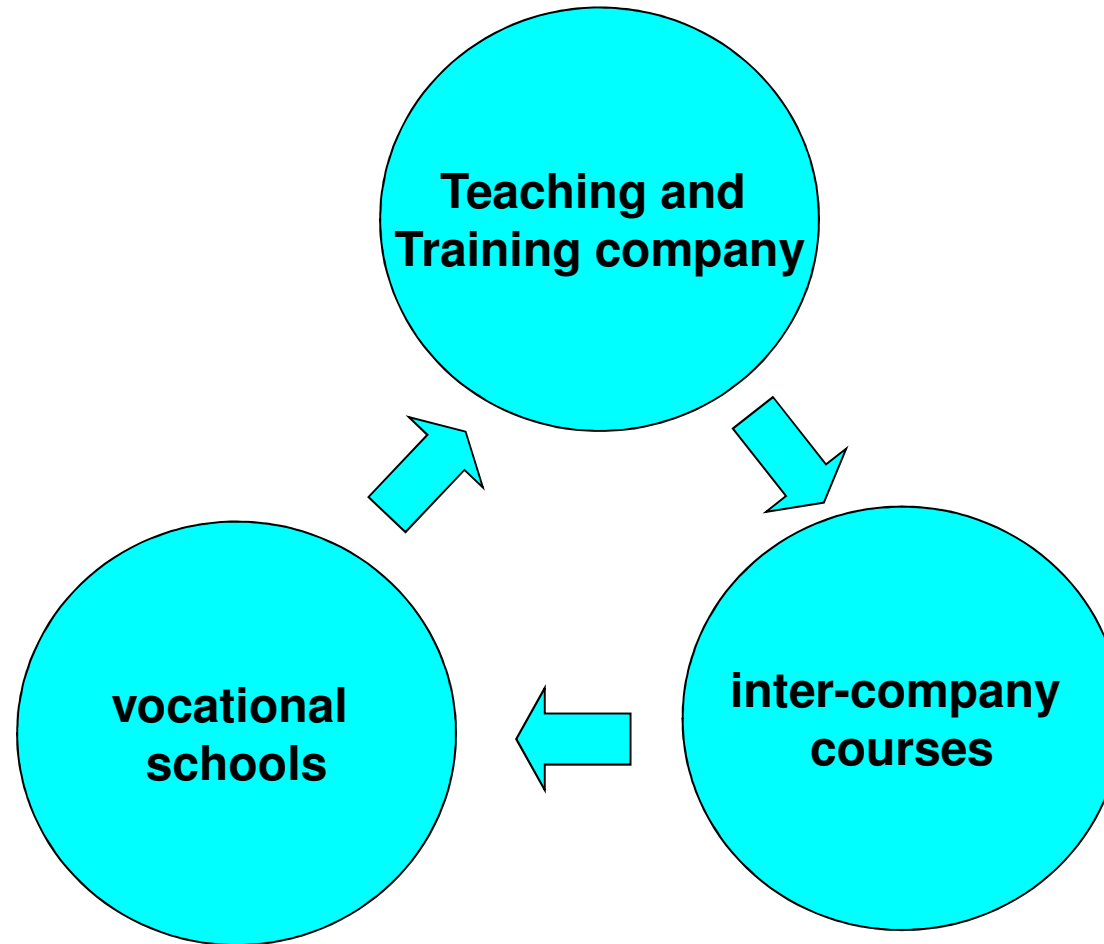
# Vocational Education in Switzerland

The keyplayers in the dual system of apprenticeship:



# 3 training locations in the Vocational training system

**gibb**



## Die Gewerblich-Industrielle Berufsschule Bern: Numbers (I) (Status 1.1.2013)

### Personnel

642	Teachers (= 242,5 Fulltime jobs)
78	Administrative Employees (Head Administrator, Head of Central Services, Salary Office, Countability, Secretaries, School-mechanic, Informatics Services, Laboratory Assistants, Librarians)
12	Maintenance
10	Apprentices (4 KV, 5 Informatics, 1 Housekeeper)



## Die Gewerblich-Industrielle Berufsschule Bern: Numbers (II) (Status 1.1.2013)

### "Customers"

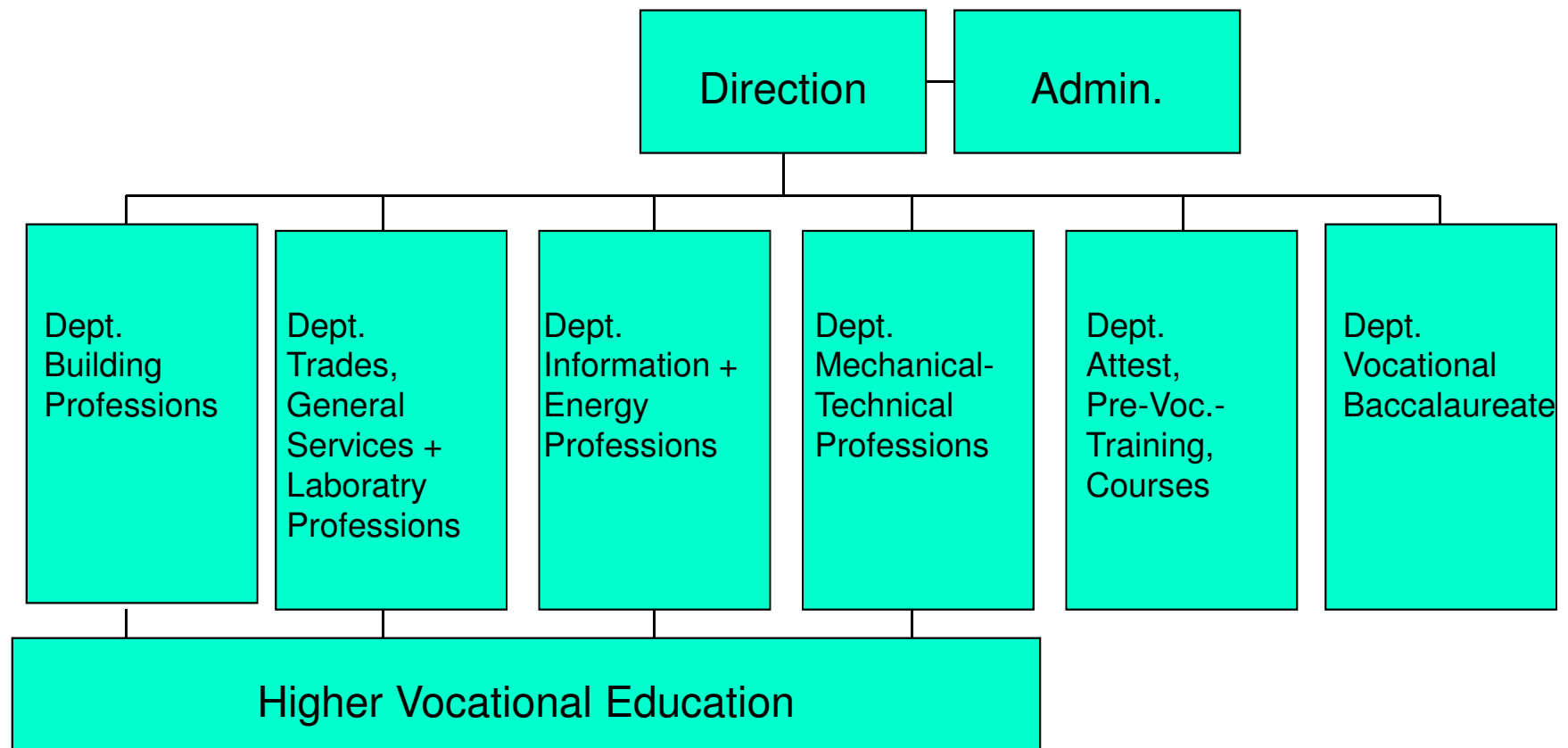
6945	Apprentices
667	Students in Higher Vocational Education (HF für Technik, Vorbereitung auf BP und HFP)
130	Students in Professional Tuition Courses

## Die Gewerblich-Industrielle Berufsschule Bern: Numbers (III)

"Production" (Annual Production):

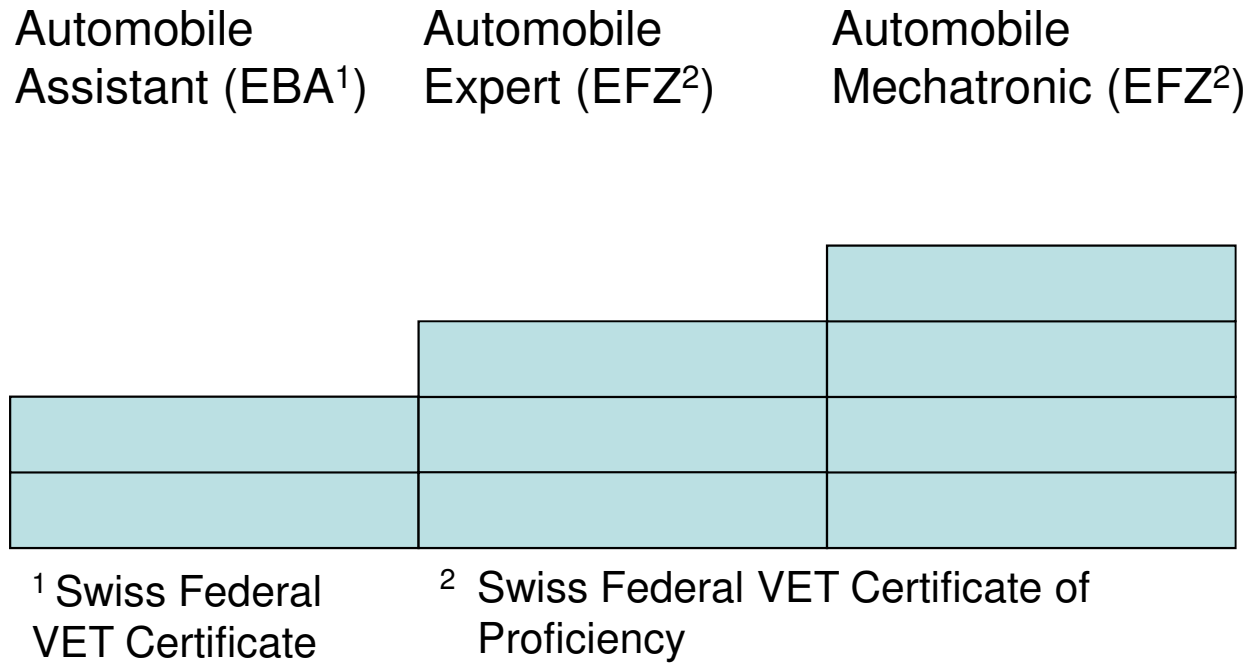
232'591	Lessons in Basic Vocational Tuition
16'955	Lessons in Higher Vocational Education
1'641	Lessons in Professional Tuition Courses

## Die Gewerblich-Industrielle Berufsschule Bern: Organization



# Curriculum

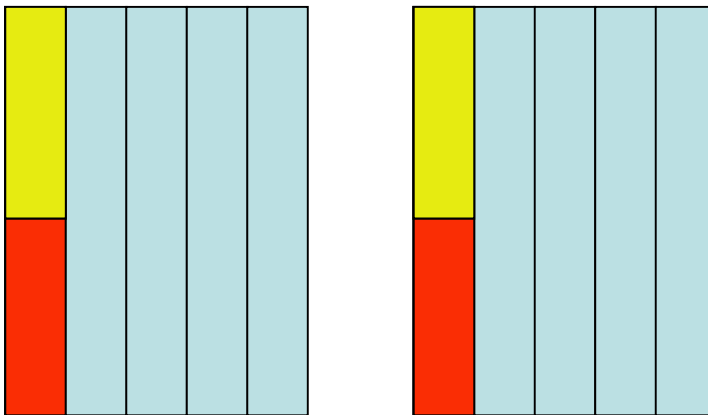
**e.g.: automotive**



# Curriculum

**e.g.: automotive**

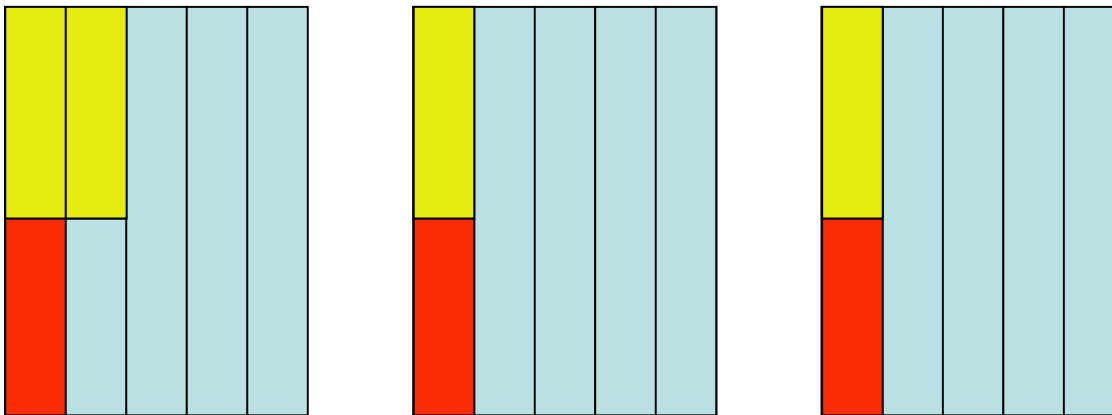
Automobile Assistant (EBA<sup>1</sup>)



# Curriculum

**e.g.: automotive**

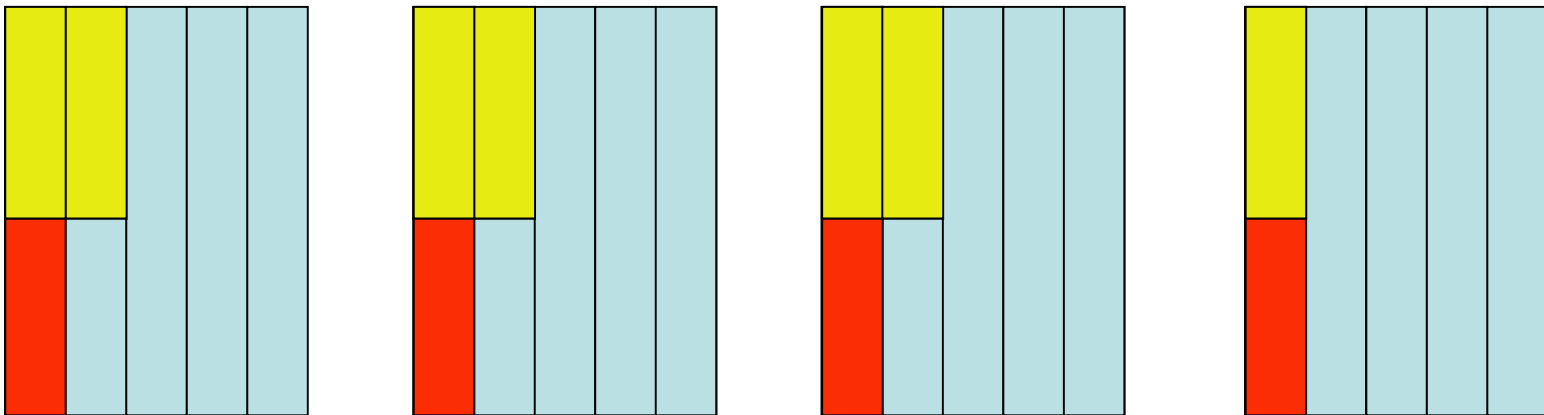
Automobile Expert (EFZ<sup>2</sup>)



# Curriculum

**e.g.: automotive**

Automobile Mechatronic (EFZ<sup>2</sup>)



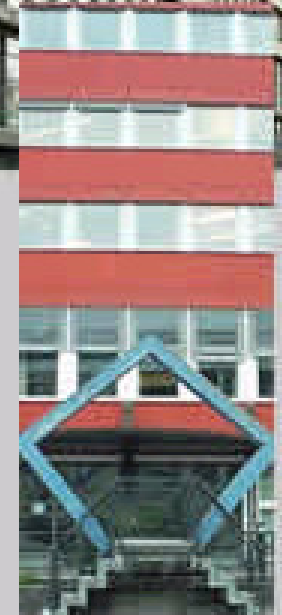
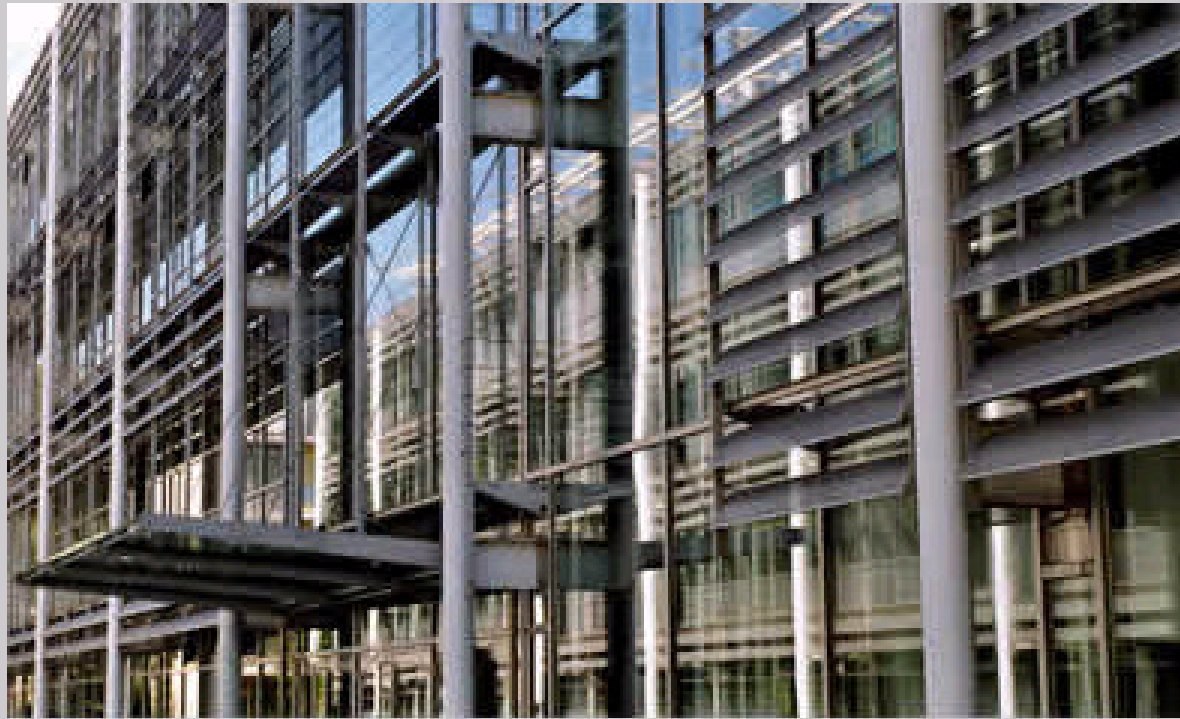
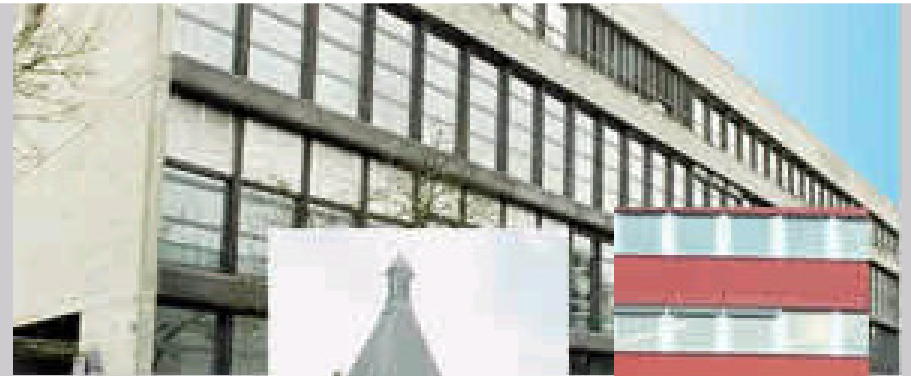
# Curriculum



## e.g.: Automobile Mechatronic (EFZ)

Table of Lessons	Quantitative Distribution of Lessons at Vocational School				
	Year of Education	1.	2.	3.	4.
	<b>Total</b>	540	540	540	360
	<b>General Knowledge</b>	120	120	120	120
	<b>Sports</b>	60	60	60	60
	<b>Professional Knowledge</b>	360	360	360	200
	Qualitative Distribution of Lessons of Professional Knowledge (X)				
Methodical-, Self- and Social Competence	60	60	60	60	
Disciplines, Reports	Contens	300	300	300	160
Basic Knowledge	Mathematics, Physics	X	X	X	X
	Electro Technology	X	X		
	Materials, Production Engineering	X	X		
	Communication, Customer Services		X	X	
	Technical Information	X	X	X	X
	Regulations	X	X	X	X
	Informatics	X	X	X	X
Automobile Technology	Electrics / Electronics		X	X	X
	Engine		X	X	X
	Drive Line			X	X
	Chassis/Travel Carriage	X	X		

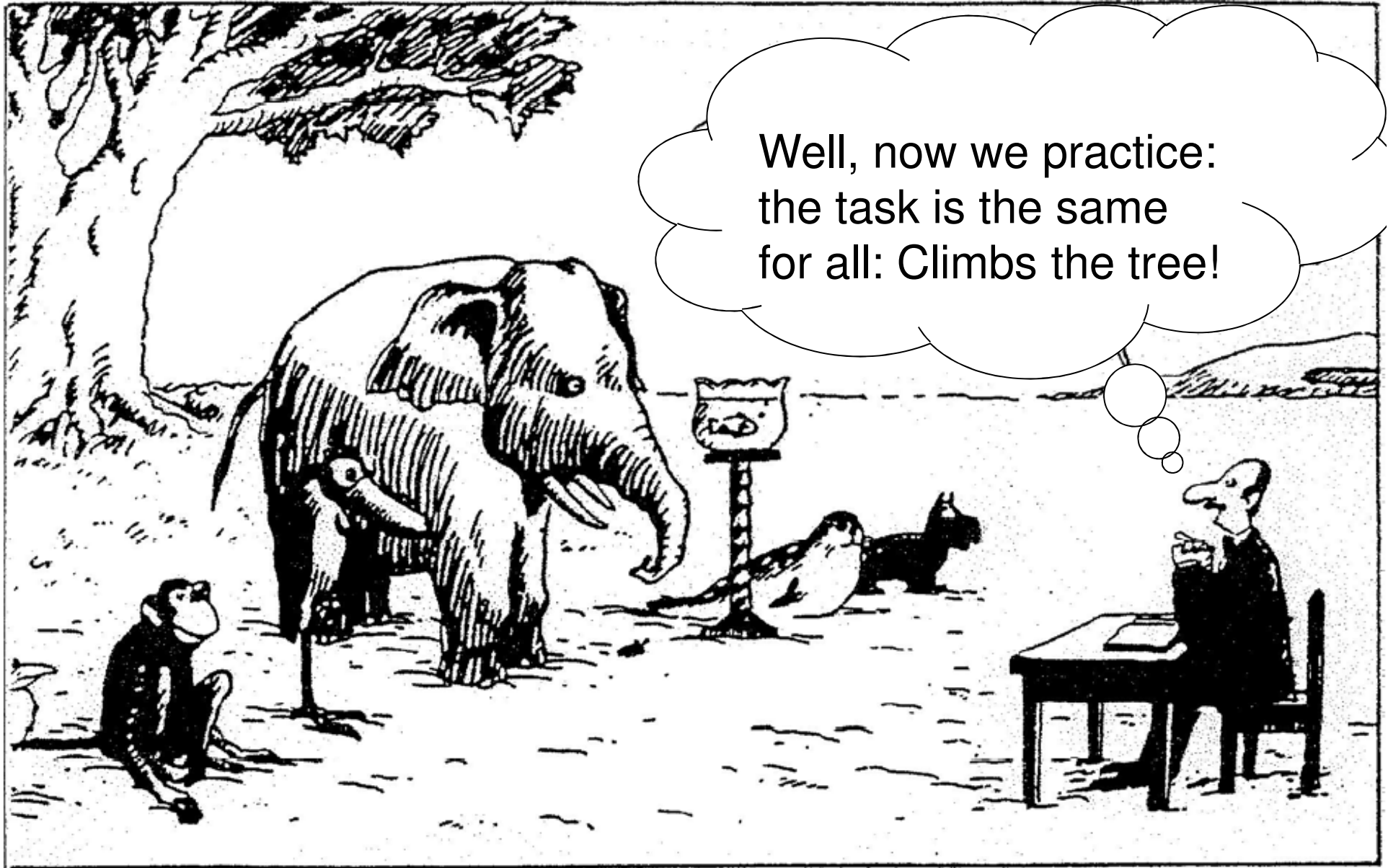




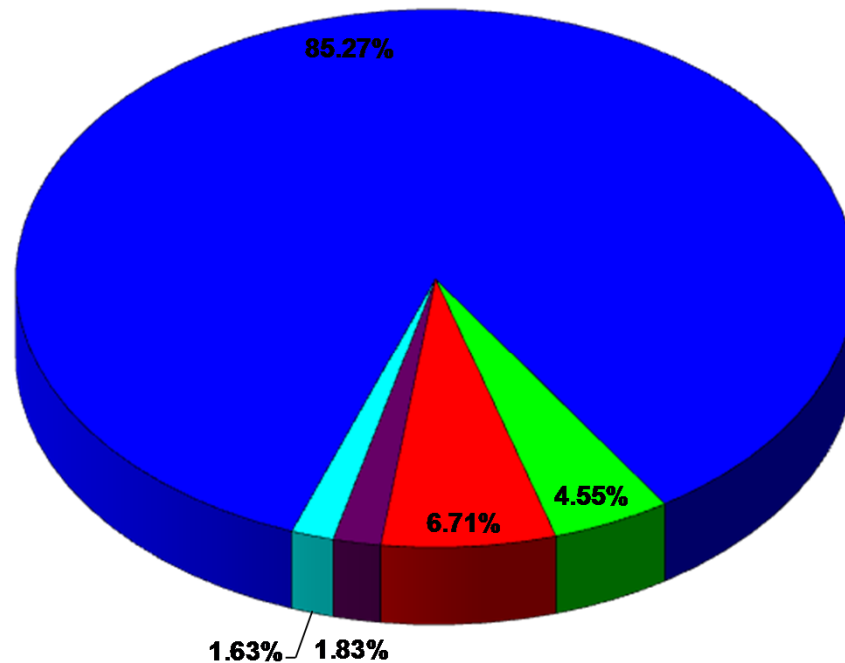
## Die Gewerblich-Industrielle Berufsschule Bern: Buildings

<b>Houses</b>	<b>Physical Education</b>
Hauptgebäude Lorrainestrasse 1 Campus Lorrainestrasse 5, 5a, 5b Lehrhalle Lorrainestrasse 3	Wankdorf
Viktoria	Viktoria (Friedbühl)
Steigerhubel Gastgewerbliches Zentrum	Steigerhubel Schwabgut

# Challenges ...



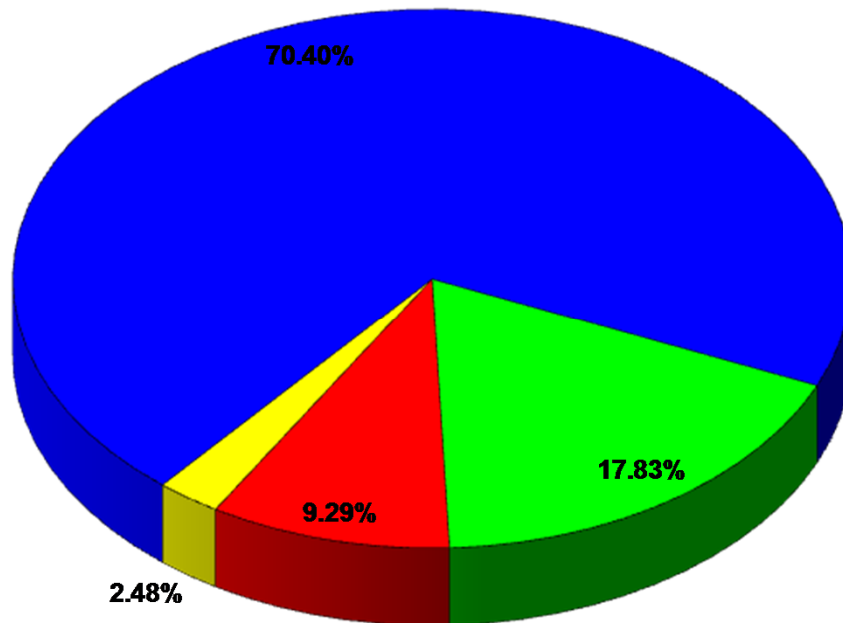
## Spending/ 63,88 Mio.



- Personalaufwand / 43,353 Mio.
- Anschaffungen Lehrmittel, Informatik, Mobiliar, Medien / 2,316 Mio.
- Mietkosten, Gebäudeunterhalt, Strom, Wasser / 3,411 Mio.
- Verwaltungskosten (Telefon, Porti, Honorare, Spesen, Drucks., Büromat.) / 0,933 Mio.
- Verbrauchsmaterial und Unterhalt / 0,831 Mio.

# Financing/ 63,88 Mio.

**gibb**



■ Kosten z.L. Kanton / 35,793 Mio.

■ Bundesbeiträge / 9,066 Mio.

■ Schul- und Kursgelder, ausserkantonale Schulkostenbeiträge / 4,725 Mio.

■ Übrige Erträge / 1,260 Mio.

**Thank you very much for your attention!**

