

FOLKETINGET



Folketingets Økontaktudvalg

Til: Udvalgets medlemmer og stedfortrædere

Dato: 3. juni 2010

Økontaktudvalgets studietur til Irland (Galway og Aran-øerne) den 7.-10. juni 2010

Vedlagt deltagerliste og program.

Til orientering vedlægges endvidere en del af det baggrundsmateriale, som deltageren i studieturen har fået udleveret:

- Baggrundsnotat om Sammenslutningen af Danske Småøers europæiske samarbejde generelt og samarbejdet med den irske ø-organisation i særdeleshed
- Materiale om den irske ø-sammenslutning (Irish Islands Federation) og om Aranøerne Inis Oírr og Árainn (Inis Mór).
- Materiale om den europæiske ø-sammenslutning (European Small Islands Federation).

Med venlig hilsen

Jørgen Nielsen,
udvalgssekretær

Økontaktudvalgets studietur til Irland (Galway og Aranøerne) den 7.-10. juni 2010

Deltagerliste:

Folketingets Økontaktudvalg

Formand Preben Rudiengaard (V)

Henrik Brodersen (DF)

Jørgen Lundsgaard (KF)

Udvalgssekretær Jørgen Nielsen

Udvalgsass. Tommy Jørgensen

Sammenslutningen af Danske Småøer

Formand Dorthe Winther

Henry Larsen

Sekretariatsleder Claus Jensen

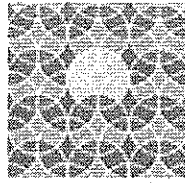
PROGRAM
Økontaktudvalgets studietur til Irland (Galway og Aranøerne) den 7.-10. juni 2010

Mandag den 7. juni	
8.00	<p>Check-in i Københavns Lufthavn (terminal 3) skal være afsluttet.</p> <p>Vær opmærksom på, at vi kun kan tjekke ind til Dublin i København, og det gælder også bagagen. Vi skal tjekke ind til Galway i Dublin.</p> <p>Individuel check-in – vi mødes ude ved gaten</p>
9.05-10.25	<p>København-Dublin (SK 537) (flyvetid 2:20)</p> <p>Rune Hørby, ambassaden, og tolk Conni Lai støder til i lufthavnen i Dublin</p>
13.00-13.45	Dublin-Galway (RE 233)
13.45-15.15	Bus til Hotel Meyrick, Galway, og check-in på hotel
15.15-16.00	<p>Briefing ved 1. sekretær ved den danske ambassade i Dublin, Rune Hørby</p> <p>Den politiske og økonomiske situation i Irland, herunder evt. kort om landdistriktsudviklingen i Irland</p> <p>Briefing efterfulgt af spørgsmål/svar</p> <p>Mødet afholdes i et mødelokale (Liam Mellows) på hotellet</p>
16.00-17.00	<p>Møde med professor Michael Cuddy, Det irske center for landdistrikternes bæredygtighed m.m. (ICERTS), Økonomisk Afdeling, Galway</p> <p>Den aktuelle økonomiske situation for landdistrikterne i Irland, herunder konsekvenserne af krisen, samt den økonomiske situation på irske øer</p> <p>Oplæg efterfulgt af spørgsmål/svar.</p> <p>Mødet afholdes i et mødelokale (Liam Mellows) på hotellet</p>
17.00-17.30	<p>Orientering ved Sammenslutningen af Danske Småøer om arbejdet i den europæiske ø-sammenslutning, European Small Islands Federation (ESIN), og samarbejdet mellem sammenslutningen og den irske ø-sammenslutning (Irish Islands Federation)</p> <p>Orientering efterfulgt af drøftelse</p> <p>Mødet afholdes i et mødelokale (Liam Mellows) på hotellet</p>
17.30-19.30	Tid til egen disposition
Ca. 19.30	Fælles middag (for egen regning). Tid og sted aftales nærmere i Galway

Tirsdag den 8. juni	
7.00-8.00	Morgenmad. Check ud fra hotel skal være afsluttet kl. 8.00 (bagagen opbevares i lobbyen indtil busafgang)
8.00-9.00	Møde med kontorchef Séamus Mac Giolla Chomhaill, Ministeriet for lokalsamfund, landdistrikter og gæliske forhold Fakta om de irske øer, lovgivning, subsidier, færgetransport og regeringens ø-politik Oplæg efterfulgt af spørgsmål/svar Mødet afholdes i et mødelokale (Liam Mellows) på hotellet
9.00-10.30	Bus fra Hotel Meyrick til færgen i Ros á Mhil
10.30-11.45	Færgefart til Inis Oirr
11.45-12.45	Ankomst og indkvartering på An Shamrock
12.45-14.00	Frokost
14.00-15.30	Møde med beboerrepræsentanter fra Inis Oirr Præsentation fra Paddy Crowe og Eoin Póil om ø-kooperativet og væsentlige projekter på øen Præsentation fra Mairéad O'Reilly om Comhar na nOileán (Integrated Development Company), som leverer programmer til øerne langs kysten
15.30-17.00	Rundtur på Inis Oirr og besøg hos væsentlige projekter
17.00-20.00	Tid til egen disposition
20.00	Middag på Fishermans Cottage Restaurant sammen med repræsentanter fra den irske ø-sammenslutning og beboerrepræsentanter fra Inis Oirr og Inis Mór Udvalget er vært for middagen, som giver mulighed for en uformel snak om forholdene på de irske og danske øer m.m.

Onsdag den 9. juni	
	Morgenmad, tid til egen disposition og afgang til færge
10.30-11.30	Færefart fra Inis Oirr til Inis Mór
11.30-13.00	Møde med beboerrepræsentanter fra Inis Mór Præsentation om arbejdet i ø-kooperativet og væsentlige projekter på øen
13.00-14.00	Frokost med beboerrepræsentanter Udvalget er vært
14.00-17.00	Rundtur på Inis Mór og besøg hos væsentlige projekter
17.00-17.40	Færefart fra Inis Mór til fastland (Ros á Mhíl)
17.40-18.45	Bus til Hotel Meyrick, Galway
	Evaluering af studieturen og drøftelse af evt. opfølgning (tid og sted aftales nærmere i Galway) Aften til egen disposition
Torsdag den 10. juni	
6.00-6.45	Check ud fra hotel afsluttet kl. 6.15 og bus til lufthavn i Galway Check-in i lufthavnen skal være afsluttet senest kl. 6.45
7.30-8.15	Galway-Dublin (RE 232)
11.05-14.15	Dublin-København (SK 538) (Flyvetid 2:10)

Sammenslutningen



af Danske Småøer

21. maj, 2009

Baggrundsnotat om Sammenslutningen af Danske Småøers europæiske samarbejde, generelt, og samarbejdet med den irske ø-organisation i særdeleshed - til brug ved Folketingets besøg på irske øer

Kort om Sammenslutningen af Danske Småøer

Sammenslutningen af Danske Småøer, i daglig tale Ø-sammenslutningen, blev dannet af øboere tilbage i 1974. Det er en interesseorganisation for i dag 27 medlemsøer. Øverste myndighed i organisationen er repræsentanter fra hver af de 27 øers beboerforeninger. Kort fortalt, så er vores mission at bevare og udvikle de små øer som levende helårssamfund. I 2010 har vores befolkningsmæssigt største ø, Orø, 881 beboere, mens den mindste, Hjortø, blot har 8 beboere. Organisationen har sekretariat på Strynø, med en fuldtidsansat og en deltidsansat. Vi kan besøges på web: www.danske-smaaoer.dk

Om vores samarbejde med de irske øboere

Tilbage i 1990'erne blev der skabt de første kontakter til de irske øer. De irske småøer ønskede at opbygge en interesseorganisation efter dansk forbillede. Det medførte dels besøg på de danske øer af irske øboere og embedsmænd og dels at vores danske ø-formand og daværende sekretariatsleder besøgte de irske øer for at fortælle om det danske ø-arbejde. Resultatet blev at irerne dannede deres ø-organisation Comhdhail Oileáin na hÉireann/Irish Islands Federation. De ligner meget vores organisation på den måde, at deres medlemsøer ligner vores i størrelse. Men ellers er den noget anderledes opbygget. Således udgøres bestyrelsen også af "fastlands-embedsmænd". Og da nogle af øerne, bl.a. Aran Islands, som vi skal besøge, er det oprindelige irske sprog og kulturs kerneland, så har den gælliske interesseorganisation haft en vis indflydelse på den irske ø-organisation. Den irske ø-organisation har gennem årene nydt godt af en national opbakning, økonomisk såvel som moralsk. Hvilket har gjort dem i stand til at drive en organisation med flere ansatte. Og hvad vi i den danske ø-organisation har fundet interessant, er princippet med ø-kooperativer på de irske øer, som gør dem i stand til at projekter i værk, altså en grad af selvforvaltning. Men i kølvandet på finanskrisen, som jo i særlig grad har ramt Irland, så kan vi konstatere, at den irske ø-organisation er på hælene.

På de danske små øer har vi en egen lokal aktionsgruppe (LAG) under Landdistriktsprogrammet, Småøernes Aktionsgruppe, som Ø-sammenslutningen er fadder til. Ligeledes har de irske øer en sådan lokal aktionsgruppe, og vi er i Småøernes Aktionsgruppe ved at søsætte et samarbejdsprojekt med den irske ø-aktionsgruppe, hvor vi vil udarbejde energi-planer for tre øer fra hhv. Irland og Danmark

Den irske ø-organisation kan besøges på <http://www.oileain.ie/>

Om vores europæiske samarbejde

Ø-sammenslutningen har også tidligt haft kontakt med den svenske ø-organisation, Skärgårdarnes Riksförbund. Og svenskerne tog i 2001 initiativ til et møde i Sverige, hvor ø-organisationer fra 6 lande deltog. Det har så siden udviklet sig til European Small Islands Federation (lidt ulogisk forkortet til ESIN), som i dag består af medlemsorganisationer fra Danmark, Estland, Finland, Frankrig, Grækenland, Irland, Italien, Skotland, Sverige og Åland. Vi er en broget skare, nogle af organisationerne består af væsentligt større øer end vores, og nogle har meget svage organisationer. Ambitionen med dette samarbejde er at være de små øers stemme i EU, og i øvrigt være ramme for erfaringsudveksling de små europæiske øer imellem. ESIN afholder årligt et større møde – Danmark er vært for årsmødet i 2010, hvilket foregår i september. De stærkeste aktører i ESIN er efter vores mening Danmark, Sverige, Irland og Frankrig. ESIN har gennemført et udbytterigt Interreg-projekt sammen, hvor den irske partner var Lead Partner. ESIN kan besøges på web: <http://www.europeansmallislands.net/>

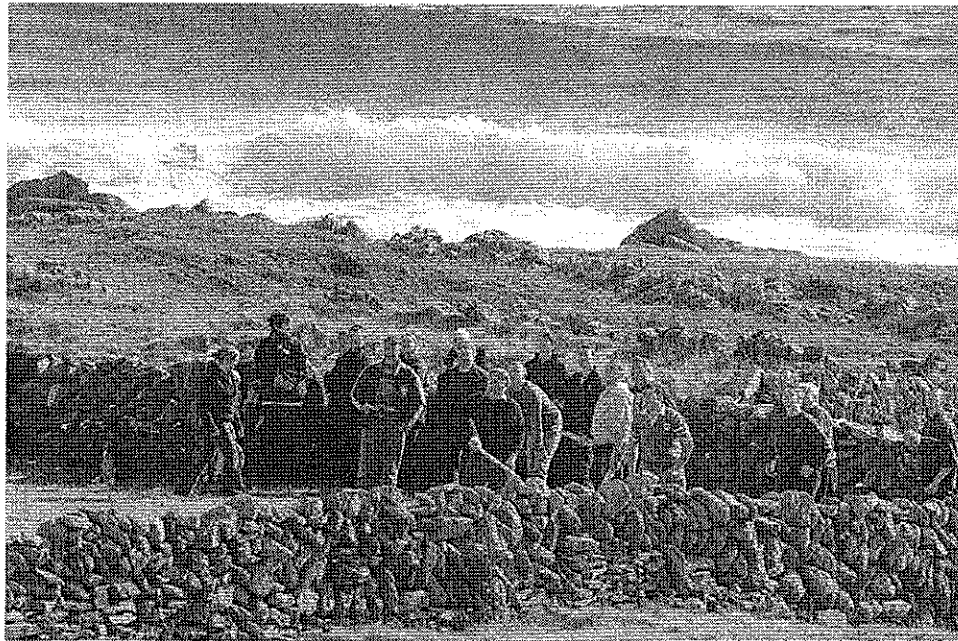
På vegne af S sammenslutningen af Danske Småøer

Claus Jensen
sekretariatsleder

Sammenslutningen af Danske Småøer
Strynø Brovej 12, Strynø
5900 Rudkøbing
cj@danske-smaaoer.dk
tlf. 62 51 39 93, fax 62 51 39 96

www.oileain.ie

Island Policies



COMHDHÁIL
OILEÁIN
NA hÉIREANN



IRISH ISLANDS
FEDERATION

Supporting
sustainable,
permanent
communities on
Ireland's islands

The Irish Islands Federation is the representative body for the inhabited offshore islands of Ireland. Our aim is to support sustainable, permanent communities on the islands. We currently have 33 member islands, with populations from just one person to 824 and a total combined population of just under 2,900. Our islands are found along the coast from Rathlin in Co. Antrim, through Donegal, Sligo, Mayo, Galway and Cork.

Current Government policy is that it supports island communities in staying on the islands. That there is a Ministry with responsibility for the islands and a dedicated

Islands Section within that Ministry has undoubtedly contributed to improvements in access and the provision of services for islanders.

There has been substantial investment in infrastructure on the islands over the last decade and this, alongside increased subsidisation of ferry and air passenger services and support for health and other essential services, has improved the quality of life for islanders. Under the Islands Sub-Programme of the National Development Plan 2007-2013, the current government has committed €126m for continued development to sustain island communities.

'Cead' Day in Inis Meáin © Nutan

Supporting islanders to continue to live on the islands requires investment from the government and local authorities and also island specific policies which take into account the particular challenges of island living. We set out here our proposals in eleven major policy areas which fundamentally impact on the quality of life of islanders and on the long term viability of island communities. Implementing these policies will require co-operation between islanders and local and statutory agencies and a flexible and imaginative approach to addressing the needs of small island communities. Our experience has been that a

partnership approach, where islanders are centrally involved in policy and project development has produced workable and sustainable solutions.

If you would like further information about our policies and our work, or indeed about the islands we represent, visit our website at www.oileain.ie, call us on 099 75096 or email us at eolas@oileain.ie.

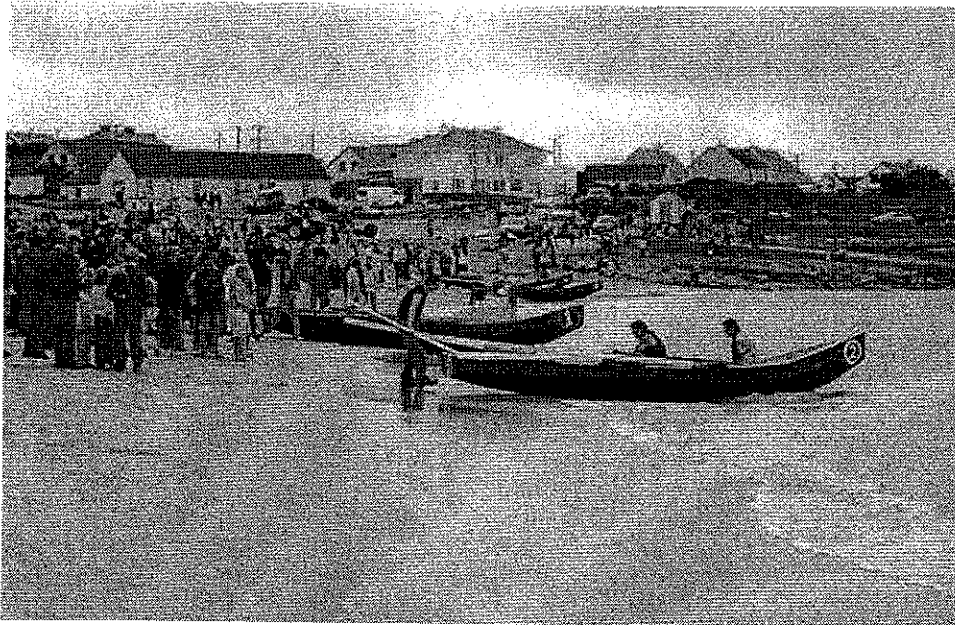
Comhdháil's work is supported by the Department of Community, Rural and Gaeltacht Affairs.



An Roinn Gnáthaf Pobail, Tuaithe agus Gaeltachta
Department of Community, Rural and Gaeltacht Affairs

www.oileain.ie

Inis Óírr Co. na Gaillimhe



Currach Races in Inis Óírr

Inis Óírr is the smallest of the Aran Islands and the one closest to the mainland - Doolin in Co. Clare is only 8km away. There is a beautiful beach right beside the pier and the bars and hotel are located close to the same beach.

Áras Éanna, on the west side of the island, is the most westerly Arts and Heritage centre in Europe. It was built as a weaving factory but the local Co-op and Údarás na Gaeltachta converted it at the end of the 1990s. It has a theatre with 70 seats, an art gallery, a studio for resident artists and a little Café, as well as craft centres for local people. A number of

concerts and other arts events are organised in the centre throughout the year. www.araseanna.ie.

The people of Inis Óírr are particularly interested in renewable energy and the Co-op has been granted funds to buy a community minibus which will run on electricity. A subcommittee of the Co-op has carried out a pilot study on the use of a wood pellet burning stove in a local house and the use of solar panels instead of oil for home heating.

Inis Óírr has a secondary school, which means that young people can stay on the island until they finish

their second level education. There is also an active GAA branch and both the women's and men's teams won the All Island Football Championships this year.

If you would like further information about opportunities on Inis Óírr, contact the Co-op on 099 75008 ccteo@eircom.net www.inisoirr.ie

COMHSHÁIL
OILEÁIN
NA HÉIREANN



IRISH ISLANDS
FEDERATION

Facts

Population Size	247 2.5 km x 2.5 km
Nearest Port Ferry	Ros a' Mhil/ Doolin Twice a day (more frequently during the summer)
Nearest Town/city	Galway
Aer Arann	Flights three times a day - 6 minutes
Schools	Primary - 28 Secondary - 25
Childcare	Nursery 2-5 years 20 hours a week
Broadband	Group scheme
Shops	One shop Bank once a month
Health Care	Full-time nurse and doctor
Hotel Pub	One Hotel 3 pubs
Housing	Houses available for rent
Work Space	There is a limited amount of work space available
Existing Businesses Include	Builders, translation service, restaurants, weaving, crafts.
Enterprise Opportunities	Graphic design Consultancy, Traded services
Recreation	GAA, Judo Club, Youth Club, Comhaltas

www.oileain.ie

Árainn Co. na Gaillimhe

= Inis Mór



Currach Racing during Patrún Árainn, June 2007

Árainn is the biggest island in Galway and has the largest population of all the inhabited offshore islands of Ireland. Because of this it has excellent facilities for old and young alike.

Whether you like a quiet peaceful life, or prefer a more lively one, or indeed a mixture of the two, you can experience it all in Árainn.

Cill Rónáin is the main village in Árainn and most of the businesses are located there—the supermarket, craft shops, B&Bs, pubs and restaurants.



Bun Ghabhla is the village furthest to the west on the island, a beautiful place which looks out over the Atlantic waves. And of course it is in Árainn that one of the most important archaeological sites in Europe is to be found—Dún Aonghusa, standing on the huge cliffs of Árainn.

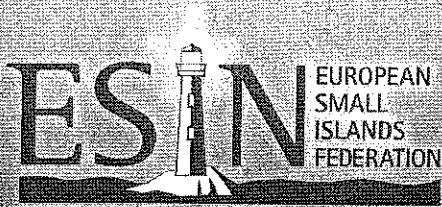
If you are interested in establishing a small business in Árainn, the Co-op have two units for lease. They also have a list of houses available for rent. There are lots of opportunities in Árainn for families and single people alike and if you would like to find out more, contact the Co-op on 099 61354.

comharcumannarann@indigo.ie
www.visitaranislands.com



Facts

Population Size	824 14 km x 3.8 km
Nearest port Ferry	Ros a Mhil Twice a day—40 minutes.
Aer Arann	Flights twice a day—7 minutes
Nearest town/city	Galway 48 km
Schools	2 Primary - 23 & 66 Secondary - 60
Childcare	Nursery 10.15-12.30 Mon-Fri
Broadband	Yes
Shops	Supermarket with ATM
Health Care	Nurse 10.30-4.00, 5 days a week Clinic Tues/Fri 9.30-1.30pm. Doctor living on the island
Hotel	One hotel
Pubs	Four pubs
Housing	Houses available for rent
Work Space	There are 2 units for lease by the Co-op.
Existing Businesses include	Co-op. Ferries. Shops. Hotels. Credit Union. Crafts. Fishing.
Enterprise Opportunities	Traded Services
Recreation	GAA, Karate Club, Athletics, Handball, Music classes.



European Small Islands Federation

ESIN was formed as a network in May 2001 for national organisations for small islands that do not have separate regional government status. The members of the network are Denmark, Estonia, Finland, France, Greece, Ireland, Italy, Scotland and Sweden.

1200 small islands

Each country has its own definition of what a 'small island' is. This takes into account local traditions, culture and degree of insularity.

ESIN has a few criteria by which it defines small islands with permanent resident communities. The island is by definition land surrounded by water and generally with no permanent link with the mainland. Many small islands have only a few inhabitants but some have several thousands. A small island in ESIN has no regional administrative authority.

There are about 1200 small islands among the ESIN members with about 343.000 inhabitants that fall under these criteria. Most of the small islands have populations of less than 1000.

From network to federation

In 2005 the six founding members of ESIN decided to formalise the structure of the network. Statutes were adopted and the European Small Islands Federation was

constituted, however the name ESIN has been retained by the organisation.

ESIN is a federation of associations for small islands and archipelagos in Europe and a forum for cooperation between member associations that are working for living islands and archipelagos.

The federation will represent the members on issues of mutual importance before the European Union parliament and institutions. The federation will also be a forum for comparison of experience between the members.

Associations with national responsibility in Europe, representing small islands and archipelagos, that are not administrative regions of their own, can be accepted as members of ESIN. There will be only one member from each country. Each country has one board member. An annual general meeting shall be arranged in the third quarter of the year. The location of the annual meeting rotates among the members.

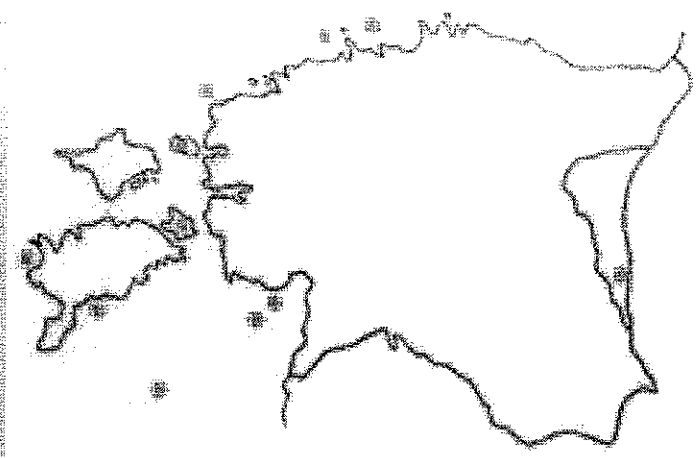
New members

In 2006 three new members joined ESIN: the Association of Estonian Islands, the Hellenic Small Island Network from Greece and the Associazione Nazionale Comuni Isole Minori, ANCIM, from Italy. All three organisations represent the small islands in their country.



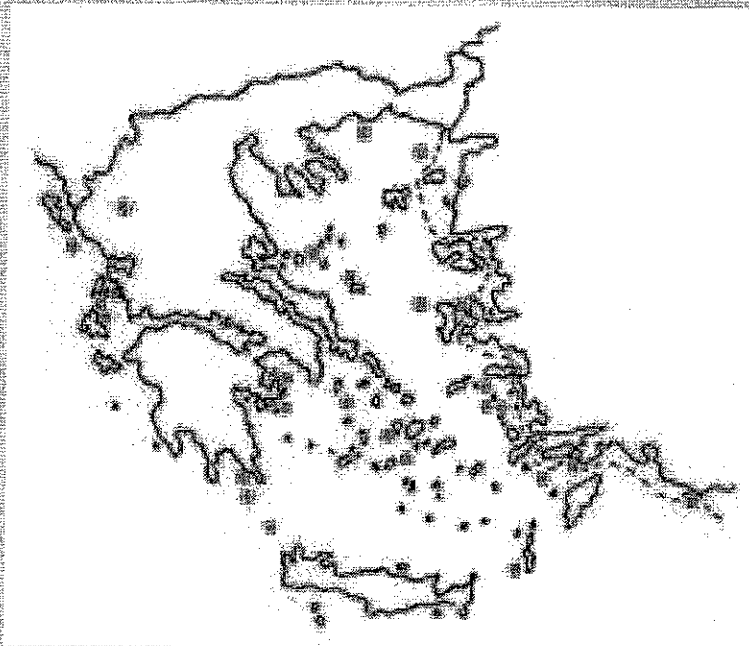
Denmark

In Denmark small islands are by definition parts of mainland based larger municipalities. There are 27 such small islands with a population of about 5 100 inhabitants, ranging between 10 and 890 (year 2008). Samenslutningen af Danske Småøer, www.danske-smaaoer.dk, works for the people on the small islands.



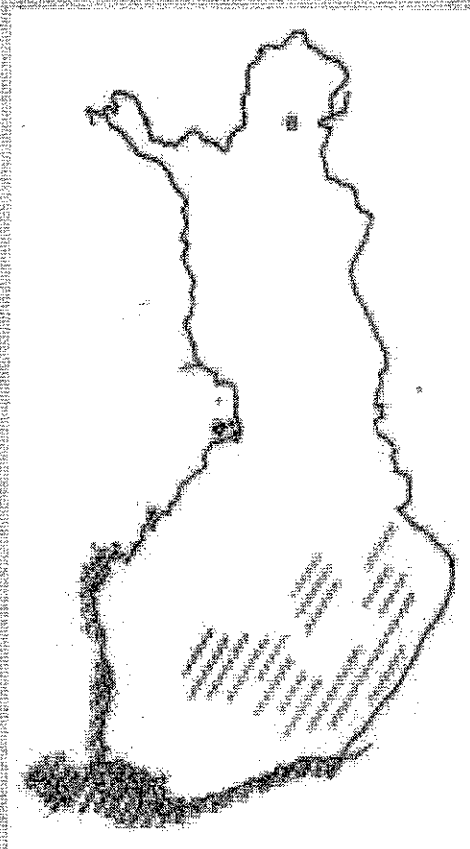
Estonia

In Estonia there are 16 islands with a total of 47 000 inhabitants. There are two big islands that are regional authorities. The remaining 14 are the small islands with about 3 000 inhabitants ranging from 1 to about 500. The main purpose of the Association of Estonian Islands, org.esk@lists.ut.ee, is to promote development and sustainable populations on the 16 islands.



Greece

The Hellenic small Islands Network, HSIN, www.smallislands.eu represents small islands throughout Greece with a population of less than 5000 inhabitants. Municipalities and Communities of 48 small islands are the main members of HSIN. The network is formed to oppose the permanent phenomenon of economic, social and technological isolation and all kinds of insularity exclusion. HSIN work for the sustainable development of the islands.



Finland

Finland has 431 inhabited small islands in archipelago areas, 152 of them in big lakes. The number of islanders is about 8 700, ranging from 1 to 972. In addition the region Åland is also an archipelago with 25 inhabited islands, 24 of these with less than 600 inhabitants. Finland's Utskar / Suomen saaret, FOSS, www.foss.fi, is the association for the Finnish islands.