

OVERVIEW SCHEDULE



**United Nations Climate Change Conference
Copenhagen, Denmark, 7-18 December 2009**

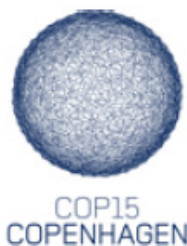
Fifteenth Session of the Conference of the Parties (COP 15)

**Fifth Session of the Conference of the Parties serving as the
meeting of the Parties to the Kyoto Protocol (CMP 5)**

**Thirty-First Session of the Subsidiary Body for Scientific and
Technological Advice (SBSTA 31)**

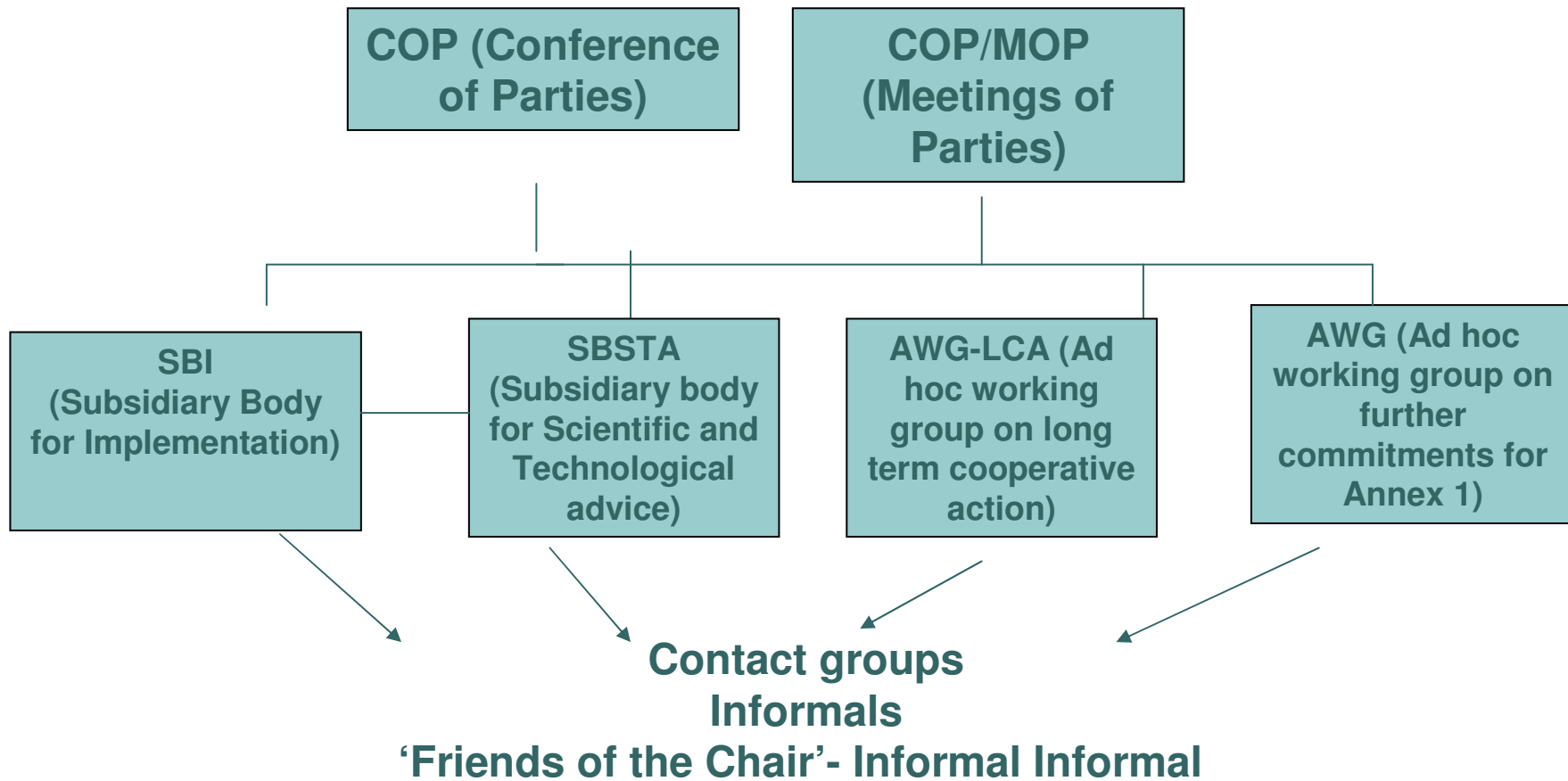
**Thirty-First Session of the Subsidiary Body for Implementation
(SBI 31)**

**Tenth session of the Ad Hoc Working Group on Further
Commitments for Annex I Parties under the Kyoto Protocol (AWG-
KP 10)**



**Eighth session of the Ad Hoc Working Group on Long-term
Cooperative Action (AWG-LCA 8)**

Opbygningen af forhandlingerne



Annex 1 pledge overview for 2020

	Low pledge	High Pledge	Reference year
Australia	-5%	-25%	2000
Belarus	-5%	-10%	1990
Canada	-20%	-20%	2006
Croatia	6%	6%	1990
EU27	-20%	-30%	1990
Iceland	-15%	-15%	1990
Japan	-25%	-25%	1990
Liechtenstein	-20%	-30%	1990
Monaco	-20%	-20%	1990
New Zealand	-10%	-20%	1990
Norway	-30%	-40%	1990
Russia	-20%	-25%	1990
Switzerland	-20%	-30%	1990
Turkey	n/a	n/a	n/a
Ukraine	-20%	-20%	1990
USA	-17%	-17%	2005

Note: Turkey has not yet presented a pledge for 2020. Assumed to follow BAU in calculations.

Note: Russia's pledge is the targets announced by Medvedev.

Note: Kazakhstan has presented a pledge of 15% compared to 1992. Not yet included in calculations.

Note: Australia target of 415Mt does not consider recent adjustment of year 2000 LULUCF emissions

Preliminary assessment of Annex 1 high pledges for 2020

TIL FMPU'S FORTROLIGE ORIENTERING. *For **Australien** er både opgørelse i 2020 og omregning til 1990 baseret på emissioner **inkl. LULUCF**, da Australiens basisår er inkl. LULUCF. Derfor stemmer summen for Annex 1 total ikke med summen tallene hver for sig.

** **Tyrkiet** har ikke udmeldt et mål. Her er antaget, at Tyrkiet følger BaU. Kazakhstans mål er ikke medtaget her

Country	1990 excl. LULUCF	Target 2020 vs. 1990	Target 2020
Australia *	454	-33%	304
Belarus	129	-10%	116
Canada	592	-3%	575
Croatia	31	6%	33
EU27	5,557	-30%	3,890
Iceland	3	-15%	3
Japan	1,270	-25%	952
New Zealand	62	-20%	49
Norway	50	-40%	30
Russia	3,319	-25%	2,489
Switzerland	53	-30%	37
Turkey (2020 = BAU)**	170		473
Ukraine	926	-20%	741
USA	6,084	-3%	5,878
AI total, ex LULUCF (Gt)	18,7	-16%	15,7

Contributions from dev. countries

TIL FMPU'S FORTROLIGE ORIENTERING. ENKELTE TAL (SÆRLIGT I RÆKKEN 2020 BAU) ER VURDERINGER. TAL KAN ÆNDRE SIG. (KINA, INDIEN: Intensitetsmål er forbedringer i 2020 ift. 2005).

Country	2020 BAU	Contribution	Reductions	Emissions after reductions
	Mt CO2e	% Below BAU	Mt CO2e	Mt CO2e
Brazil	2,7	-39%	-1,1	1,7
China	?	Carbon intensity (40-45%)	?	?
India	?	Carbon intensity (20-25%)	?	?
Mexico	0,9	-21%	-0,2	0,7
South Korea	0,8	-30%	-0,2	0,6
Indonesia	2,8	-41%	-1,2	1,7
South Africa	0,8	-34%	-0,3	0,5
Singapore	0,07	-16%	-0,01	0,06
Costa Rica		-100%		0
Maldives		-100%		0
Rest NAI	?	0%	?	?
Total NAI	?	?	?	?

Model results

TIL FMPU'S **FORTROLIGE** ORIENTERING. ENKELTE TAL (SÆRLIGT I RÆKKEN 2020 BAU SAMT KINA OG INDIENS REDUKTONER UNDER BAU) ER VURDERINGER. TAL KAN ÆNDRE SIG).

Country	2005	2020 BAU	Contribution 2020	Reductions 2020	Emissions after reductions
	Mt CO2e	Mt CO2e	% Below BAU	Mt CO2e	Mt CO2e
Brazil	2,8	2,8	-39%	-1,1	1,8
China	7,6	13,0	0-5%	0-0,6	12,4-13,0
India	2,3	3,8	0%	0	3,8
Mexico	0,9	1,0	-21%	-0,2	0,8
South Korea	0,7	0,9	-30%	-0,3	0,6
Indonesia			-41%	-1,2	1,6
South Africa			-34%	-0,3	0,5
Singapore			-16%	-0,01	0,06
Costa Rica			-100%	n.a.	0
Maldives			-100%	n.a.	0
Rest NAI	YES	YES	0%	YES	YES
Total NAI	24,9	34,2	-9% til -11%	-3,0	30,6-31,2