

DTU Fødevareinstituttet



21. januar 2010  
bhel

Vi har hermed fornøjelsen at fremsende rapporten

**Annual Report on zoonoses in Denmark 2008**

Rapporten kan også findes elektronisk på Fødevareinstituttet, Danmarks Tekniske Universitets hjemmeside (<http://www.food.dtu.dk>) under zoonosecentret og årsrapporter.

Yderligere eksemplarer kan rekvireres ved at kontakte til Vibeke Bay på tlf. 40215377 eller på mail [vibb@food.dtu.dk](mailto:vibb@food.dtu.dk).

Med venlig hilsen

A handwritten signature in black ink, appearing to read 'Birgitte Helwig', written in a cursive style.

Birgitte Helwig

Epidemiolog

Afd for mikrobiologi og risikovurdering

CVR-nr. DK 30 06 09 46

Danmarks Tekniske Universitet  
Fødevareinstituttet

Mørkhøj Bygade 19  
2860 Søborg

Tlf. 35 88 70 00  
Dir. 40 21 19 62  
Fax 35 88 70 01

[bhel@food.dtu.dk](mailto:bhel@food.dtu.dk)  
[www.food.dtu.dk](http://www.food.dtu.dk)

# Annual Report on Zoonoses in Denmark 2008



## Annual Report on Zoonoses in Denmark 2008

Edited by:  
Birgitte Helwigh and Anne Louise Krogh  
The Danish Zoonosis Centre  
National Food Institute  
Technical University of Denmark

Steen Ethelberg  
Statens Serum Institut

This is an official publication from the National Food Institute, Technical University of Denmark, the Danish Veterinary and Food Administration and Statens Serum Institut.

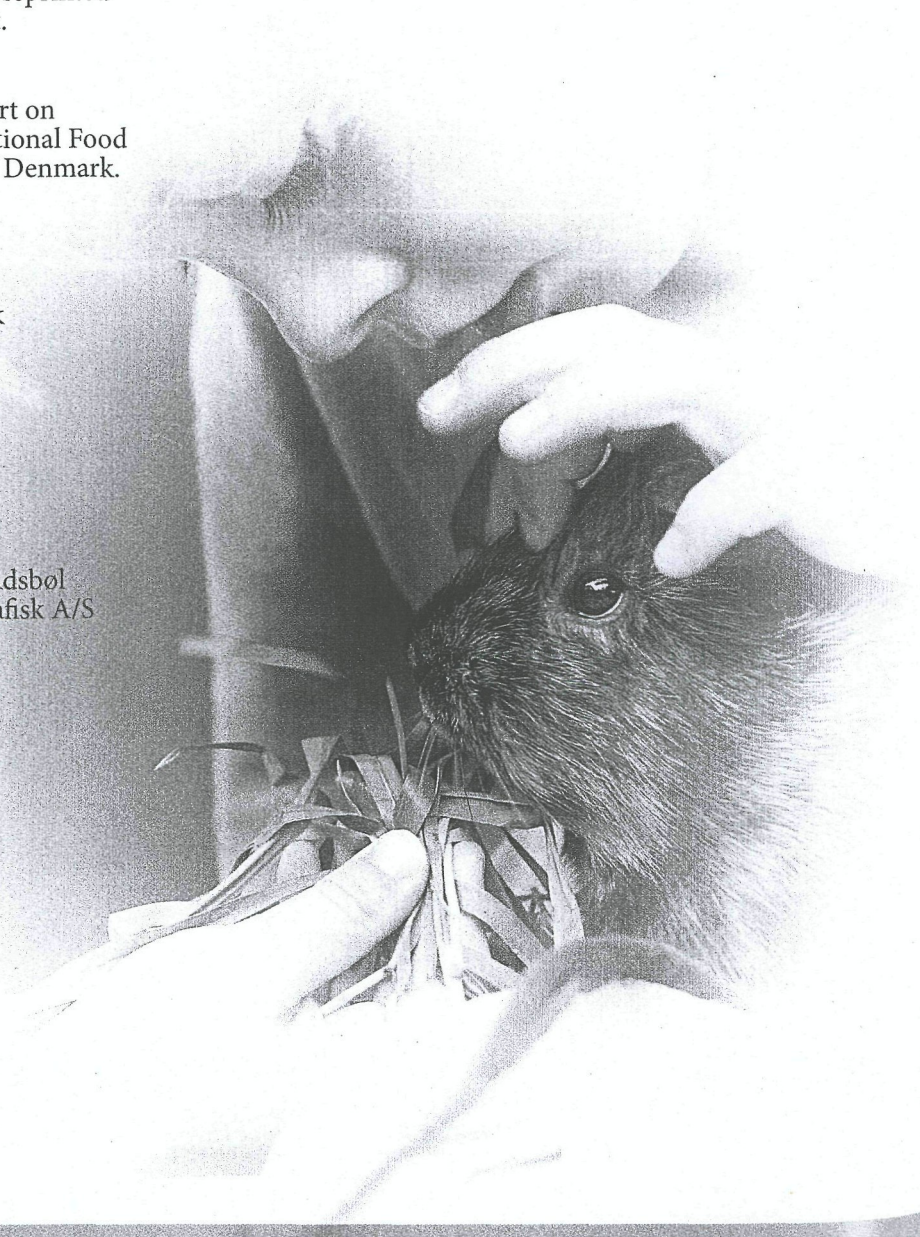
Text and tables may be cited and reprinted only with reference to this report.

Suggested citation:  
Anonymous, 2009. Annual Report on Zoonoses in Denmark 2008, National Food Institute, Technical University of Denmark.

Reprints can be ordered from:  
The Danish Zoonosis Centre  
National Food Institute  
Technical University of Denmark  
Mørkhøj Bygade 19  
DK - 2860 Søborg  
Denmark  
Phone: +45 40 21 53 77  
Fax: +45 35 88 70 28  
E-mail: vibb@food.dtu.dk

Layout: Susanne Carlsson  
Photos: Colourbox and Mikkel Adsbøl  
Printing: Rosendahls Schultz Grafisk A/S  
ISSN 0909-3837

The report is also available at:  
[www.food.dtu.dk](http://www.food.dtu.dk)



# Contents

<b>Introduction</b>	<b>5</b>
<b>1 Trends and sources in human salmonellosis</b>	<b>6</b>
1.1 Salmonella Source Account 2008	
<b>2 Outbreaks of special interest</b>	<b>10</b>
<b>3 Typing methods used in the surveillance of foodborne pathogens</b>	<b>12</b>
3.1 Surveillance of human infections	
3.2 Surveillance of food and animal isolates	
3.3 Outbreak detection and investigation	
3.4 National and international cooperation	
<b>4. VTEC - status and human risk factors</b>	<b>16</b>
4.1 Human cases in 2008	
4.2 VTEC in cattle	
4.3 VTEC in minced beef meat - 2008 investigation	
4.3 Risk factors for sporadic VTEC infections in Denmark	
<b>5. EU related topics</b>	<b>19</b>
5.1 Trichinella special status	
5.2 Control of Salmonella in animal populations - EU regulations and studies	
<b>6. Surveillance and monitoring</b>	<b>20</b>
6.1 Surveillance of human disease	
6.2 Outbreaks of zoonotic gastrointestinal infections	
6.3 Surveillance and monitoring of animals and animal products	
6.4 Official testing of zoonotic pathogens in foodstuffs	
<b>Appendix</b>	
Appendix A. Trends and sources in human salmonellosis	24
Appendix B. Human disease and outbreak data	25
Appendix C. Monitoring and surveillance data	31
Appendix D. Monitoring and surveillance programmes	44
Appendix E. Population and slaughter data	50
Appendix F. List of Figures and Tables	52

National Food Institute  
Technical University of Denmark  
Mørkhøj Bygade 19  
DK - 2860 Søborg

T: 35 88 70 00  
F: 35 88 70 01  
[www.food.dtu.dk](http://www.food.dtu.dk)

ISSN: 1600-3837