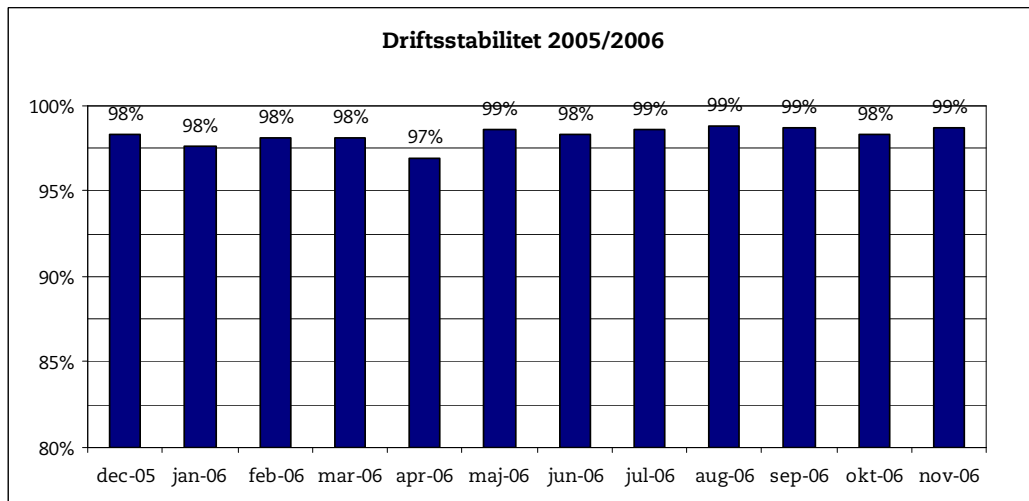


5. december 2006

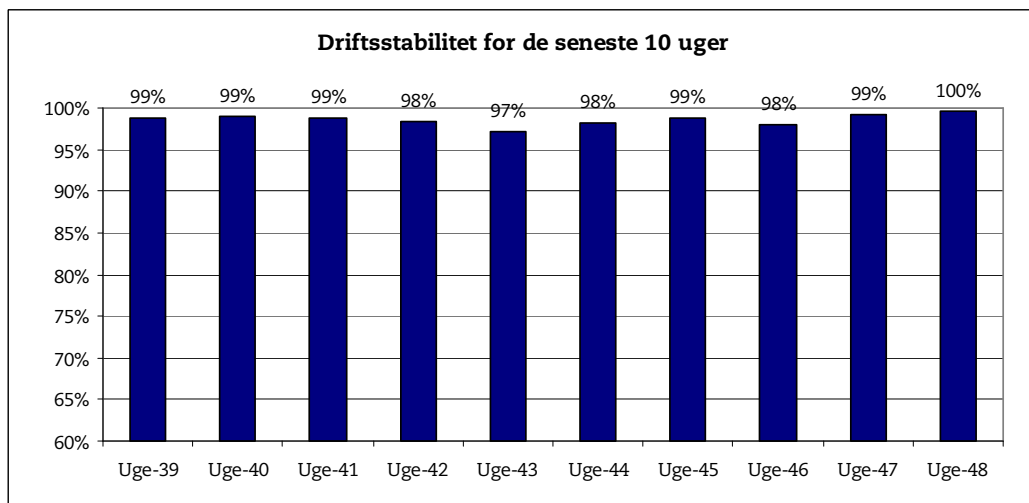
## Metroens driftsstabilitet og passagertal uge 48, 2006

### Driftsstabilitet

Driftsstabiliteten i november var på ca. 99 pct.

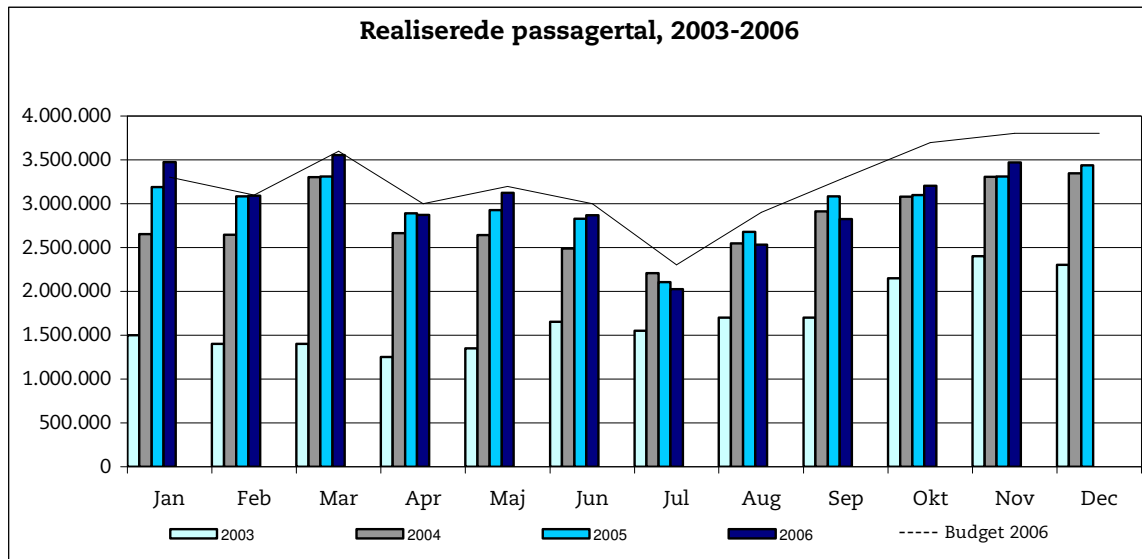


Driftsstabiliteten i uge 48 var på ca. 100 pct.

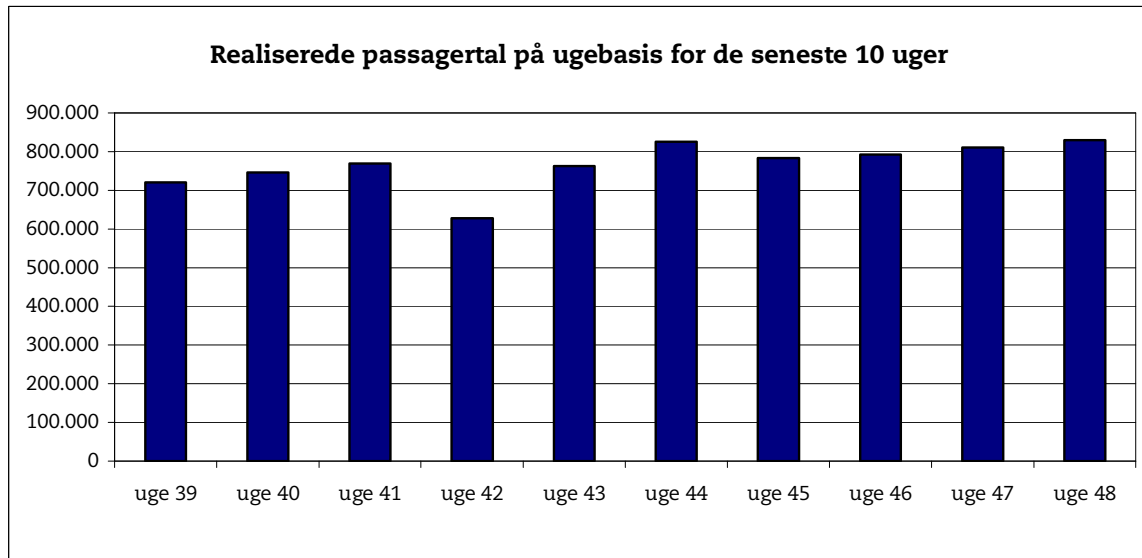


## Passagertal

Passagertallet for november var ca. 3,5 mio.



Passagertallet i uge 48 var ca. 829.000.



Opgørelser i dette notat bygger på foreløbige tal, hvorfor der tages forbehold for eventuelle senere justeringer.