

Invitation to

**The 16th Nordic
Research Conference**

ON

Safety – NoFS XVI

Topic: Interventions that works?

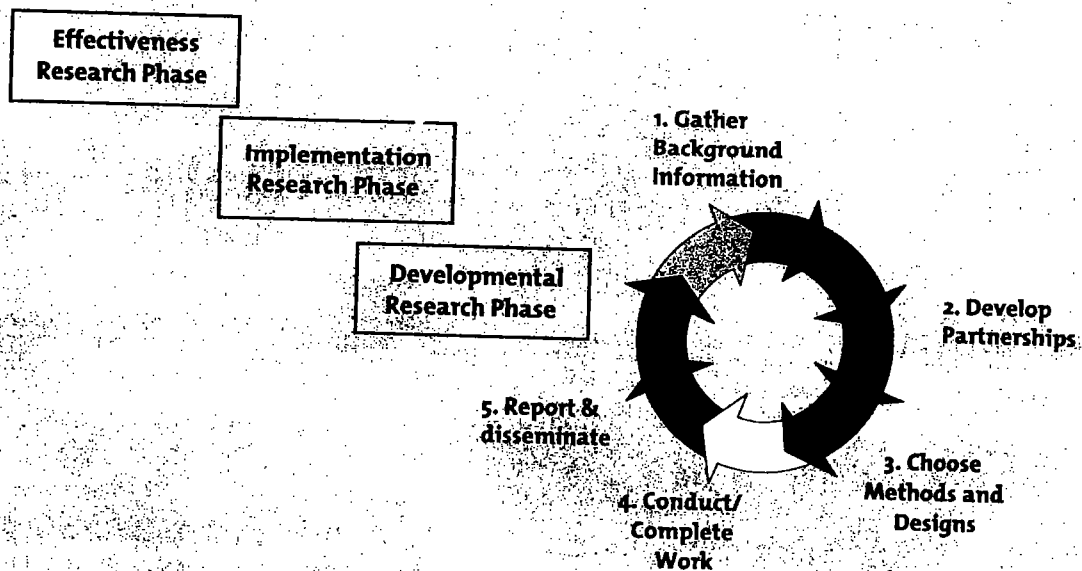
Gilleleje, Denmark June 8-10, 2005



You are invited to participate in the 16th NofS conference

Main theme: Intervention efficiency and effectiveness – what works?

The ultimate goal for any safety intervention is a sustainable positive effect on health and safety. Evaluating the efficiency and effectiveness of these safety interventions is in increased demand in many safety research fields. However, for interventions to be considered efficient and effective they must first go through research phases of development and implementation as stated by the NORA* Intervention framework. The "intervention framework" is a rigorous model for intervention research and will provide the main theme for presentations at the 16th NofS conference.



*Linda M. Goldenhar et al. J Occup Environ Med. 2001; 43:616-622

NORA (National Occupational Research Agenda Intervention Effectiveness Research team)

Keynote speakers

National accident prevention strategies: What does not work.

*Terje Assum, Senior Researcher
TØI - Institute of Transport Economics,
Norway*

National road safety strategies exist. To what extent is it possible to implement the action necessary to achieve the objectives, and what are the barriers and possibilities for further implementation. Are safety effects of these strategies measurable?

Safety Culture – does it provide ideas for prevention?

*Andrew Hale, Professor
Faculty of Technology, Policy and
Management, Delft, Nederland*

What is meant by a safety culture at the workplace? How is it measured? How does safety culture fit in within an organisation?

Perceptions of accidents, and causal models

*Keynote speaker to be confirmed
and*

*Anders Pousette, PhD,
National Institute of Working Life,
Sweden*

Can we infer causality from our statistical causal models, and if we can, in what way? What do these causal models look like in safety research, and do they provide a framework for our understanding of accidents?

Communicating safety - strategies and means

*Birgitte Ravn Glesen, Senior Lecturer
Communication, Roskilde University,
Denmark*

Why do campaigns seldom work in order to make people behave more safely?

The two main paradigms used in campaign strategies, the "behavior-" and the "action"-oriented, will be introduced in order to discuss ways in which it is possible to perform in preventive work, when the goal is to see a long-term effect in the reaction of the target-group.

Purpose

The purpose of NoFS 2005 is to strengthen the Nordic network of safety researchers, administrators and practitioners and to create a framework in which knowledge and experience can be shared. Furthermore, NoFS provides the opportunity to discuss ideas and methods across sectors, in order to enhance accident and injury prevention efforts. This includes the injury and safety research fields within work, transport, home and leisure. The conference in 2005 will identify where contemporary safety research areas are in terms of the different steps involved in the "Intervention framework" model. Presentations will be given by invited keynote speakers and from conference participants' own projects and experiences. Students are also welcome.

Background

NoFS stands for 'Nordisk Forskningsnetværk for Sikkerhed' (Nordic Research Network on Safety), which since the 1980's has assembled researchers from different professions and sectors within the field of injury and safety. After a period of dormancy around the turn of the century the 14th and 15th NoFS conferences were successfully held in Trondheim, Norway (2002) and Karlstad, Sweden (2003). It is with great pleasure

that we can now invite you to the 16th NoFS conference in Denmark in 2005, where we will proceed with the valuable experiences and successes from the previous years. The National Institute of Public Health in Denmark will host the conference and the Institute's Centre for Injury Research is in charge of the arrangement together with the National Institute of Occupational Health, the National Working Environment Authority, the Danish Road Directorate, Danish Transport Research Institute and the Nordic planning committee.

Structure

All presentations at NoFS 2005 will take place in plenum – this means that there will be no parallel sessions. This is to ensure broad cross-disciplinary discussions of problems and methods within the different fields of research.

Time and place

NoFS 2005 will take place at Gilleleje KursusCenter, Tinkerup Strandvej 8 A, DK-3250 Gilleleje. Phone (+45) 48 30 03 11. The conference starts Wednesday June 8, 2005 at 13:00 hours (lunch not included) and ends Friday June 10 at 12:00 (lunch not included). Lunch can be purchased at the Centre.

Venue

For the conference we have chosen a locality that will provide ideal conditions for the participants to connect both professionally and socially. Gilleleje Kursus-Center is beautifully located on steep slopes with a view over the sea of Kattegat, and surrounded by 180,000 m² of natural beauty - including a nearby beach. The distance from Copenhagen Central Station is only 60 km (approximately 1 hour and 45 minutes with public transport) and from Elsinore 27 km (approximately 1 hour with public transport).

The conference centre has modern and functional meeting rooms, and the accommodations are situated in detached houses next to the centre. All houses contain two separate bedrooms, most of them with their own bathroom and a shared sitting room and kitchen. It is also possible for up to six people to stay in one house, and to make your own meals and in that way reduce some of the conference fee. For more information on the conference centre and houses go to www.danskskoleferie.dk – 'kursus & konference' – 'Gilleleje'.

ation

DANSKE ARBEJDS TILBUDSFORSKNING



Important dates and information

Deadline for submission of abstract March 1, 2005
Confirmation of accept of abstracts April 1, 2005

Conference programme available Approximately April 1, 2005

Deadline for registration and payment (early) April 6, 2005
Deadline for cancelling (full refund) April 19, 2005
Deadline for cancelling (50% refund) May 2, 2005

Conference June 8-10, 2005

Conference site: www.niph.dk/cuf and www.nofs.net
E-mail address for the secretariat: ham@niph.dk and bfm@niph.dk



Language

English is recommended. Abstracts and presentations (overheads or Power Point slides) must be in English.

Participation fee

Price for participation incl. conference fee, two nights accommodation, 2 x breakfast, 2 x dinner, 1 x lunch, coffee/tea, fruits, cake etc.

- Two persons in one house, DKK 4,500 per person
- Single in one house, DKK 5,110

For students incl. PhD students (limited number)

Price for participation incl. conference fee, two nights accommodation, 2 x breakfast, 2 x dinner, 1 x lunch, coffee/tea, fruits, cake

- Four persons in one house, DKK 4,040 per person
- Six persons in one house, DKK 3,590 per person

The same but *without* dinners and lunches (it is possible to cook in the houses and to buy food on the premises)

- Four persons in one house, DKK 3,500 per person
- Six persons in one house, DKK 3,150 per person

Registration and payment:

Registration for the conference is done by payment to Nordea Bank A/S, Denmark
IBAN: DK772000 8300 037 775
Swift code: NDEADKXX

Danes should make use of the following account: 2228 - 8300 037 775. Indicate "NoFS 2005" and your full name in the payment. Payment should be received by April 6, 2005 at the latest. By later registration a fee of DKK 300 is added. Please fill in the enclosed registration form or request a registration form from Hanne Møller: ham@niph.dk.

Cancelling:

By cancelling before April 19, 2005, the payment will be refunded in full. By cancelling before May 2, 2005 50% of the payment will be refunded. If cancelling later than May 2, 2005 there will be no refund. Cancelling must be done by mailing to ham@niph.dk.

Abstracts

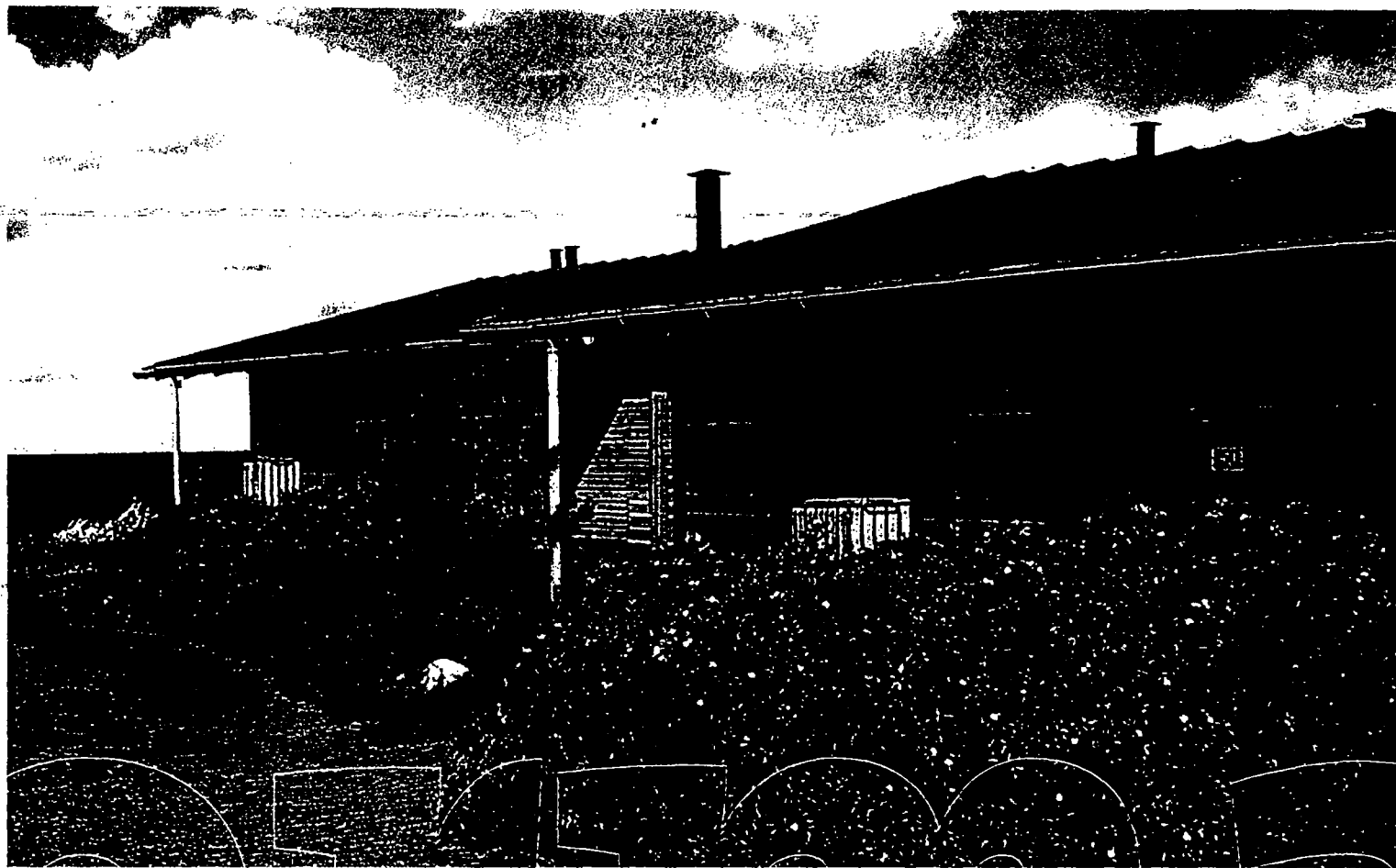
Abstracts are welcome regarding accidents, injuries and safety research within work, transport, home and leisure, including topics regarding safety culture, communication, registration, risk perception/assessment/management, strategies for preven-

tion, evaluation of interventions, and evidence of effects.

Guidelines for abstracts

- Between 200 and 500 words
- Times New Roman font size 12, with single line spacing and left aligned. There must be one blank line between title, author and the text.
- The abstract title must be typed in capital letters, font size 14 and bold.
- The abstract must contain following sections: problem under study, objectives, methods, results, discussion and conclusion.
- Section title must be typed in capital letters, font size 12.

Please submit the abstract to Hanne Møller ham@niph.dk as an attached document (e.g. Word document) by March 1, 2005 at the latest. You will receive confirmation of acceptance by e-mail by April 1, 2005.



Information

The conference programme with schedule and sessions will be available on NoFS websites - www.nofs.net and on the website of The National Institute of Public Health, Denmark - www.si-folkesundhed.dk/cuf around April 1, 2005.

Conference secretariat

Address until December 5, 2004
Centre for Injury Research
National Institute of Public Health
Svanemøllevej 25
DK-2100 Copenhagen Ø
Denmark

Address after December 5, 2004
Centre for Injury Research
National Institute of Public Health
Øster Farimagsgade 5
DK-1399 Copenhagen K
Denmark

E-mail: ham@niph.dk
Phone (+45) 3920 7777

The Danish Planning Committee

Hanne Møller (ham@niph.dk) & Birthe
Frimodt-Møller (bfm@niph.dk)
Center for Injury Research, The
National Institute of Public Health
www.niph.dk

Kurt Petersen & Tove Hels
Danish Transport Research Institute
www.dtf.dk

Kirsten Jørgensen
The National Working Environment
Authority
www.at.dk

Kim Lyngby Mikkelsen & Pete Kines
Division of Safety Research, The
National Institute of Occupational
Health, Denmark
www.ami.dk

Stig Hemdorff
The Road Directorate, Denmark
www.vd.dk

The Nordic Planning Committee

Ann Enander
Swedish National Defence College

Herdis Storgaard
Childsafety Program, Iceland

Sverre Roed Larsen
Work Research Institute, Norway

Jorma Saari
Institute of Occupational Health,
Finland

Markku Salusjärvi
Atrain Advice Ab, Finland

Marit Boyesen
Stavanger University College, Norway

Kent Lindquist
Division of Preventive and Social
Medicine and Public Health Science,
Linköping University

Registration form

16th NoFS 2005, Gilleleje, Denmark June 8-10, 2005

Please send the registration form by postal mail to Hanne Møller at the National Institute of Public Health in Denmark or send an e-mail with the information to h.m@niph.dk

Until 5 December 2004

Center for Injury Research
National Institute of Public Health
Svanemøllevej 25
DK-2100 Copenhagen Ø
Denmark

After 5 December 2004

Center for Injury Research
National Institute of Public Health
Øster Farimagsgade 5
DK-1399 Copenhagen K
Denmark

Registration and payment should be made before 6 April 2005.

Payment: Nordea Bank A/S Denmark, ISAN: DK772000 8300 037 775 Swift code: NDEADKXXXX.

Danes should make use of the following account: 2228 - 8300 037 775.

Remember to add "NoFS 2005", participant name and institution.

Please tick.

Mr.

Ms.

Speaker

Family Name

First Name

Organisation

Address

City/code

Country

Country Code – Area Code –

Phone no

Email

Conference fee per person incl. accommodation

Conference fee and accommodation

Two persons sharing a house* (4,040 DKK)

Alone in house (5,110 DKK)

Optional: I want to share a house with:

Conference fee and accommodation – students only

Four persons in a house w/meals (4,040 DKK)

without meals (3,500 DKK)

Six persons in a house w/meals (3,590 DKK)

without meals (3,150 DKK)

Optional: I want to share a house with:

Your registration will be confirmed by NIPH upon receipt of payment.

*All houses have two separate bedrooms and most bedrooms have separate bathrooms